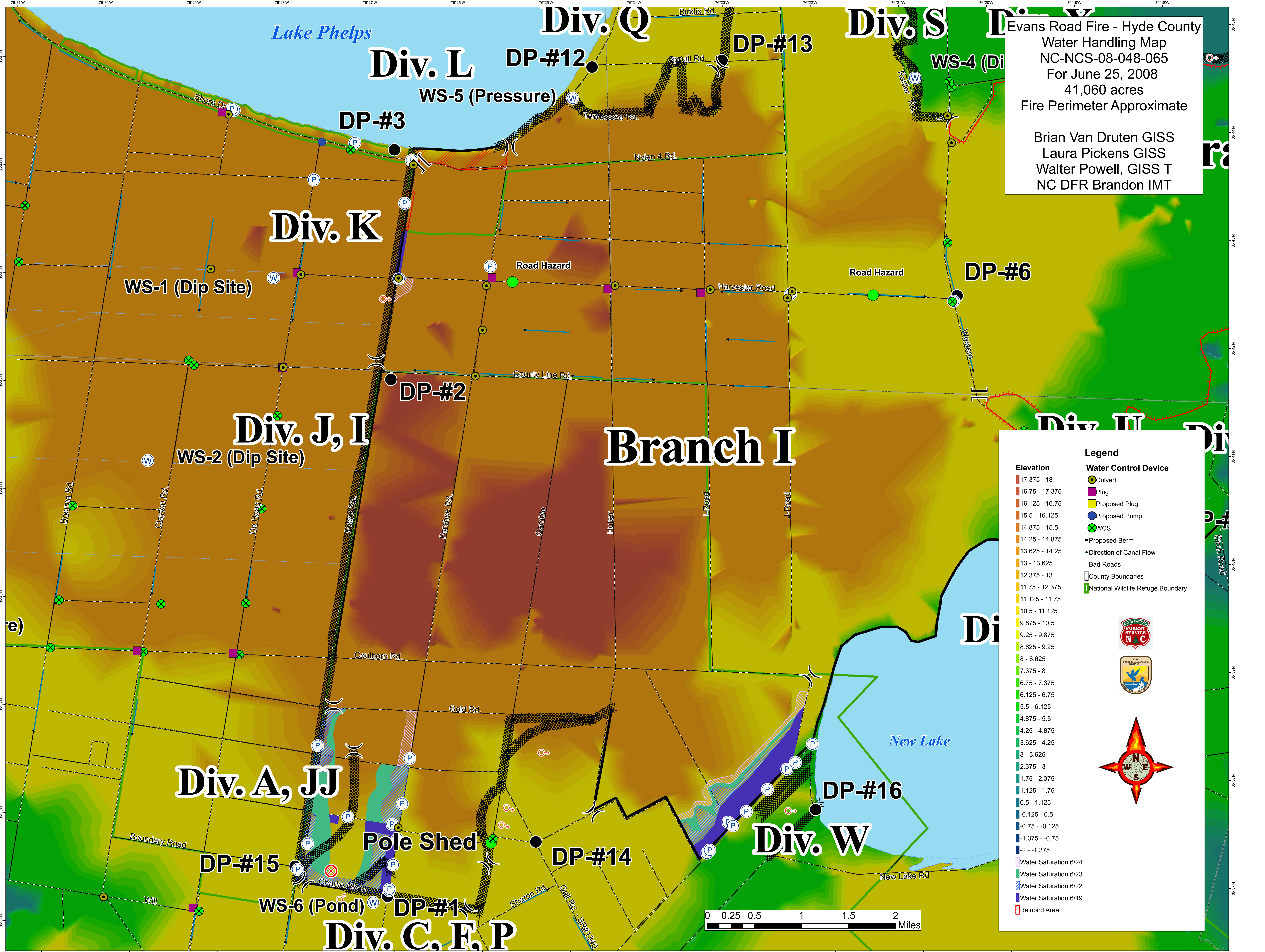


**Evans Road Fire - Hyde County**  
**Water Handling Map**  
 NC-NCS-08-048-065  
 For June 25, 2008  
 41,060 acres  
 Fire Perimeter Approximate

Brian Van Druten GISS  
 Laura Pickens GISS  
 Walter Powell, GISS T  
 NC DFR Brandon IMT



**Legend**

Elevation	Water Control Device
17.375 - 18	Culvert
16.75 - 17.375	Plug
16.125 - 16.75	Proposed Plug
15.5 - 16.125	Proposed Pump
14.875 - 15.5	WCS
14.25 - 14.875	Proposed Berm
13.625 - 14.25	Direction of Canal Flow
13 - 13.625	Bad Roads
12.375 - 13	County Boundaries
11.75 - 12.375	National Wildlife Refuge Boundary
11.125 - 11.75	
10.5 - 11.125	
9.875 - 10.5	
9.25 - 9.875	
8.625 - 9.25	
8 - 8.625	
7.375 - 8	
6.75 - 7.375	
6.125 - 6.75	
5.5 - 6.125	
4.875 - 5.5	
4.25 - 4.875	
3.625 - 4.25	
3 - 3.625	
2.375 - 3	
1.75 - 2.375	
1.125 - 1.75	
0.5 - 1.125	
-0.125 - 0.5	
-0.75 - -0.125	
-1.375 - -0.75	
-2 - -1.375	
Water Saturation 6/24	
Water Saturation 6/23	
Water Saturation 6/22	
Water Saturation 6/19	
Rainbird Area	

