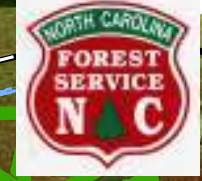


76°30'W 76°29'W 76°28'W 76°27'W 76°26'W 76°25'W 76°24'W 76°23'W 76°22'W 76°21'W 76°20'W 76°19'W 76°18'W 76°17'W

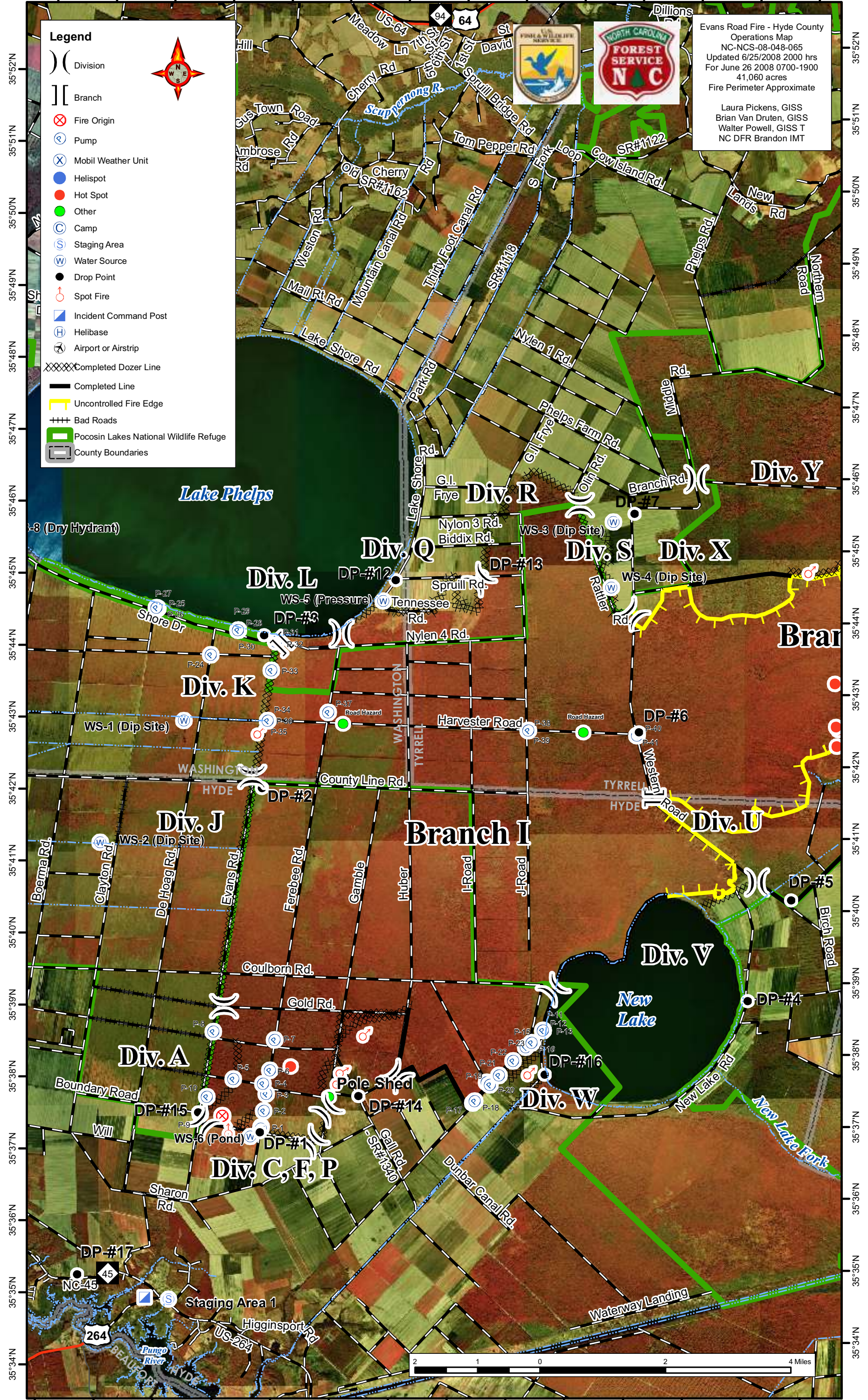
Legend

- () Division
- [] Branch
- ⊗ Fire Origin
- ⊙ Pump
- ⊗ Mobil Weather Unit
- Helispot
- Hot Spot
- Other
- ⊙ Camp
- ⊙ Staging Area
- ⊙ Water Source
- Drop Point
- ⊙ Spot Fire
- ▣ Incident Command Post
- ⊙ Helibase
- ⊙ Airport or Airstrip
- XXXXX Completed Dozer Line
- Completed Line
- Uncontrolled Fire Edge
- +++ Bad Roads
- ▭ Pocosin Lakes National Wildlife Refuge
- ▭ County Boundaries



Evans Road Fire - Hyde County
 Operations Map
 NC-NCS-08-048-065
 Updated 6/25/2008 2000 hrs
 For June 26 2008 0700-1900
 41,060 acres
 Fire Perimeter Approximate

Laura Pickens, GISS
 Brian Van Druen, GISS
 Walter Powell, GISS T
 NC DFR Brandon IMT



35°52'N
35°51'N
35°50'N
35°49'N
35°48'N
35°47'N
35°46'N
35°45'N
35°44'N
35°43'N
35°42'N
35°41'N
35°40'N
35°39'N
35°38'N
35°37'N
35°36'N
35°35'N
35°34'N



76°31'W 76°30'W 76°29'W 76°28'W 76°27'W 76°26'W 76°25'W 76°24'W 76°23'W 76°22'W 76°21'W 76°20'W 76°19'W 76°18'W

Evans Road Fire - Hyde County
 Operations Map
 NC-NCS-08-048-065
 Updated 6/25/2008 2000 hrs
 For June 26, 2008 0700-1900
 41,060 acres
 Fire Perimeter Approximate

Brian Van Druen GISS
 Laura Pickens GISS
 Walter Powell GIS-T
 NC DFR Brandon IMT

Legend

- Division
- Branch
- Fire Origin
- Pump
- Mobil Weather Unit
- Helispot
- Hot Spot
- Other
- Camp
- Staging Area
- Water Source
- Drop Point
- Spot Fire
- Incident Command Post
- Helibase
- Airport or Airstrip
- Completed Dozer Line
- Completed Line
- Uncontrolled Fire Edge
- Bad Roads
- Roads
- Hydrology
- Pocosin Lakes National Wildlife Refuge
- County Boundaries

