

76°30'W 76°29'W 76°28'W 76°27'W 76°26'W 76°25'W 76°24'W 76°23'W 76°22'W 76°21'W 76°20'W 76°19'W 76°18'W 76°17'W

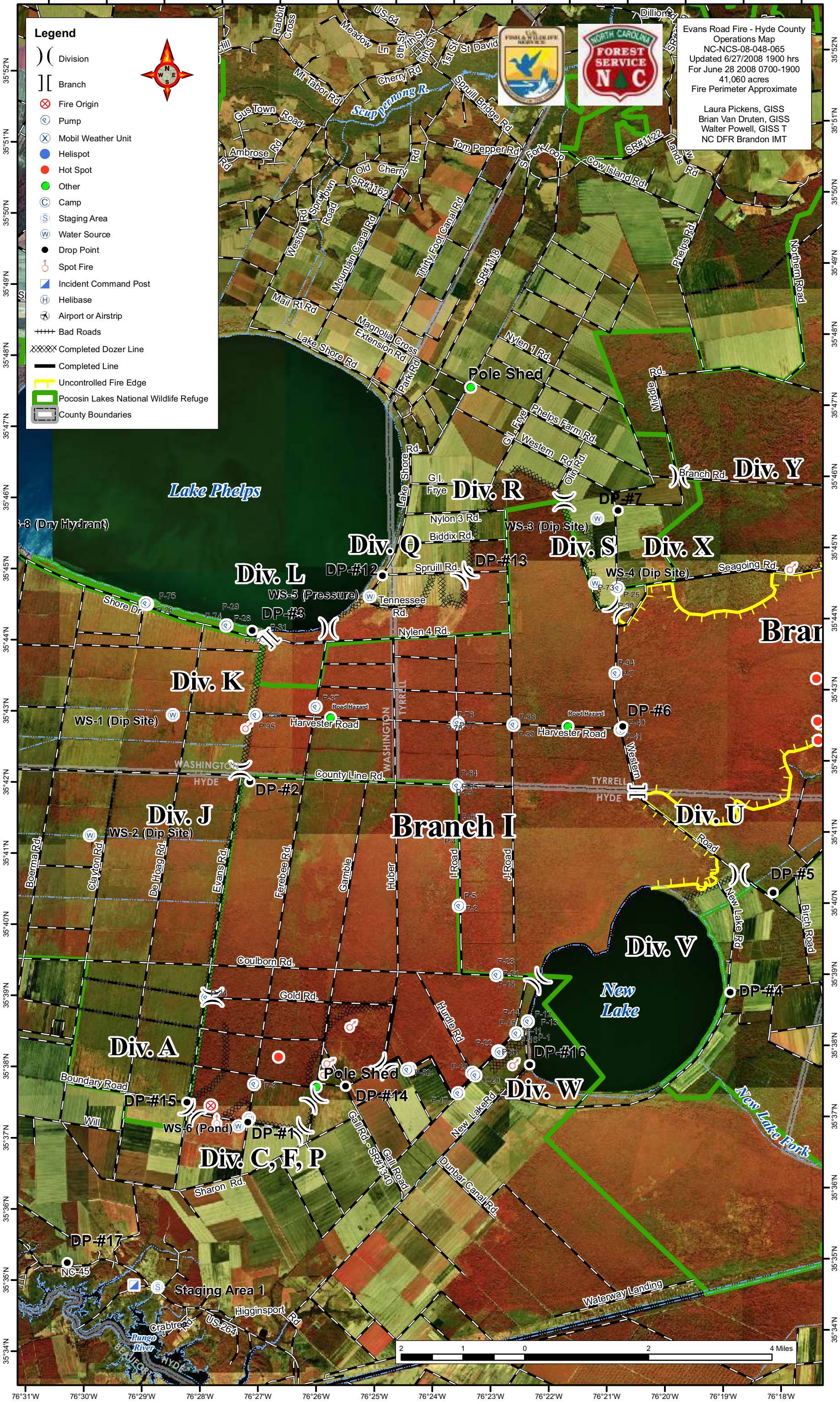
**Legend**

- ( ) Division
- [ ] Branch
- ⊗ Fire Origin
- ⊕ Pump
- ⊗ Mobil Weather Unit
- Helispot
- Hot Spot
- Other
- Camp
- Staging Area
- Water Source
- Drop Point
- Spot Fire
- ▣ Incident Command Post
- Helibase
- ✈ Airport or Airstrip
- ++++ Bad Roads
- XXXXX Completed Dozer Line
- Completed Line
- Uncontrolled Fire Edge
- ▭ Pocosin Lakes National Wildlife Refuge
- ▭ County Boundaries



Evans Road Fire - Hyde County  
 Operations Map  
 NC-NCS-08-048-065  
 Updated 6/27/2008 1900 hrs  
 For June 28 2008 0700-1900  
 41,060 acres  
 Fire Perimeter Approximate

Laura Pickens, GISS  
 Brian Van Druten, GISS  
 Walter Powell, GISS T  
 NC DFR Brandon IMT



Evans Road Fire - Hyde County  
 Operations Map  
 NC-NCS-08-048-065  
 Updated 6/27/2008 1900 hrs  
 For June 28, 2008 0700-1900  
 41,060 acres  
 Fire Perimeter Approximate

Brian Van Druen GISS  
 Laura Pickens GISS  
 Walter Powell GIS-T  
 NC DFR Brandon IMT

### Legend

- ( ) Division
- || Branch
- ⊗ Fire Origin
- P Pump
- X Mobil Weather Unit
- Helispot
- Hot Spot
- Other
- C Camp
- S Staging Area
- W Water Source
- Drop Point
- ♀ Spot Fire
- ▲ Incident Command Post
- ⊕ Helibase
- ✈ Airport or Airstrip
- ++ Bad Roads
- Roads
- Hydrology
- XXXX Completed Dozer Line
- Completed Line
- Uncontrolled Fire Edge
- ▭ Pocosin Lakes National Wildlife Refuge
- ▭ County Boundaries

