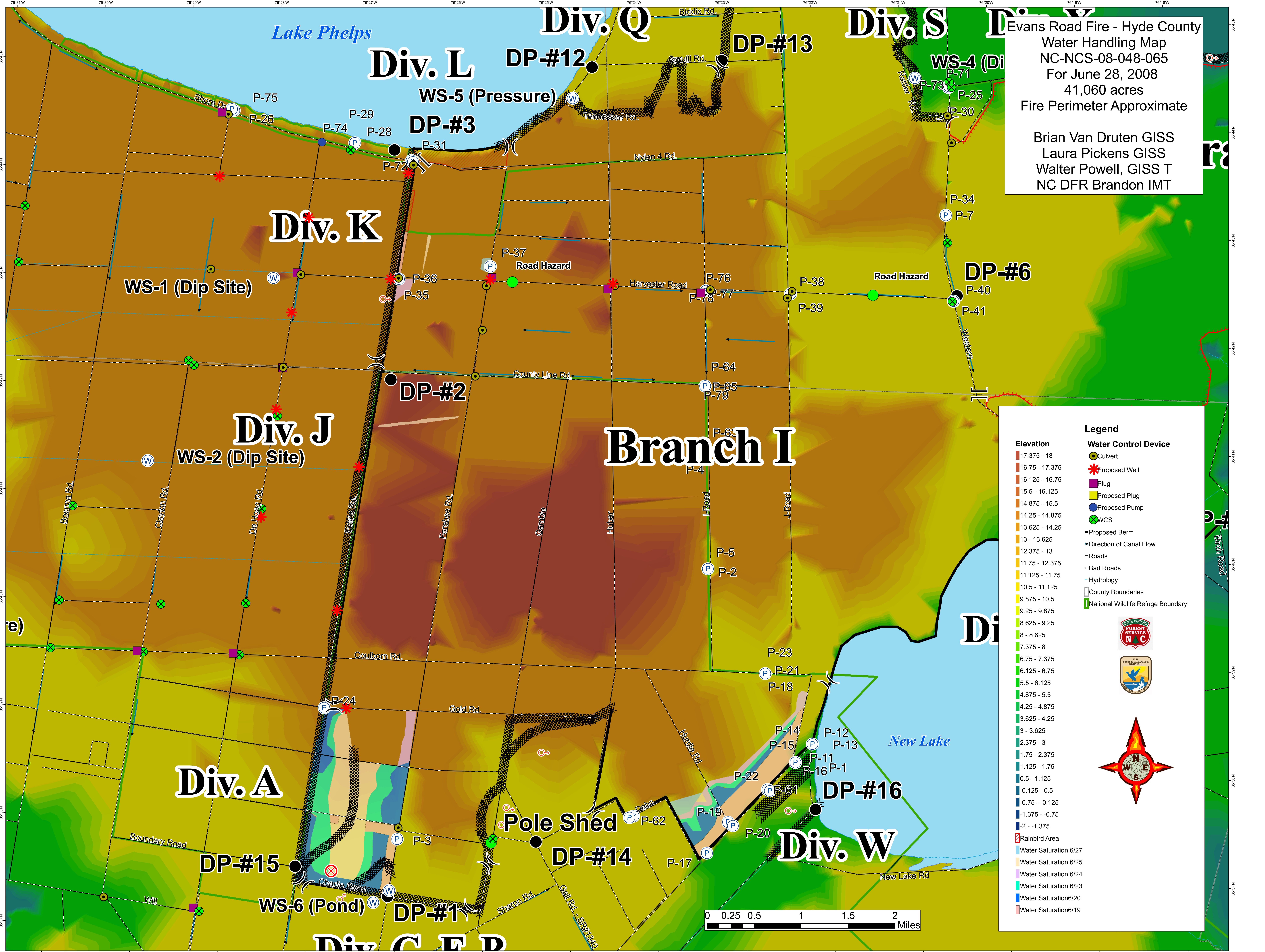


Evans Road Fire - Hyde County  
 Water Handling Map  
 NC-NCS-08-048-065  
 For June 28, 2008  
 41,060 acres  
 Fire Perimeter Approximate

Brian Van Druten GISS  
 Laura Pickens GISS  
 Walter Powell, GISS T  
 NC DFR Brandon IMT



### Legend

|                       |                                   |
|-----------------------|-----------------------------------|
| <b>Elevation</b>      | <b>Water Control Device</b>       |
| 17.375 - 18           | Culvert                           |
| 16.75 - 17.375        | Proposed Well                     |
| 16.125 - 16.75        | Plug                              |
| 15.5 - 16.125         | Proposed Plug                     |
| 14.875 - 15.5         | Proposed Pump                     |
| 14.25 - 14.875        | WCS                               |
| 13.625 - 14.25        | Proposed Berm                     |
| 13 - 13.625           | Direction of Canal Flow           |
| 12.375 - 13           | Roads                             |
| 11.75 - 12.375        | Bad Roads                         |
| 11.125 - 11.75        | Hydrology                         |
| 10.5 - 11.125         | County Boundaries                 |
| 9.875 - 10.5          | National Wildlife Refuge Boundary |
| 9.25 - 9.875          |                                   |
| 8.625 - 9.25          |                                   |
| 8 - 8.625             |                                   |
| 7.375 - 8             |                                   |
| 6.75 - 7.375          |                                   |
| 6.125 - 6.75          |                                   |
| 5.5 - 6.125           |                                   |
| 4.875 - 5.5           |                                   |
| 4.25 - 4.875          |                                   |
| 3.625 - 4.25          |                                   |
| 3 - 3.625             |                                   |
| 2.375 - 3             |                                   |
| 1.75 - 2.375          |                                   |
| 1.125 - 1.75          |                                   |
| 0.5 - 1.125           |                                   |
| -0.125 - 0.5          |                                   |
| -0.75 - -0.125        |                                   |
| -1.375 - -0.75        |                                   |
| -2 - -1.375           |                                   |
| Rainbird Area         |                                   |
| Water Saturation 6/27 |                                   |
| Water Saturation 6/25 |                                   |
| Water Saturation 6/24 |                                   |
| Water Saturation 6/23 |                                   |
| Water Saturation 6/20 |                                   |
| Water Saturation 6/19 |                                   |