

76°30'W 76°29'W 76°28'W 76°27'W 76°26'W 76°25'W 76°24'W 76°23'W 76°22'W 76°21'W 76°20'W 76°19'W 76°18'W 76°17'W

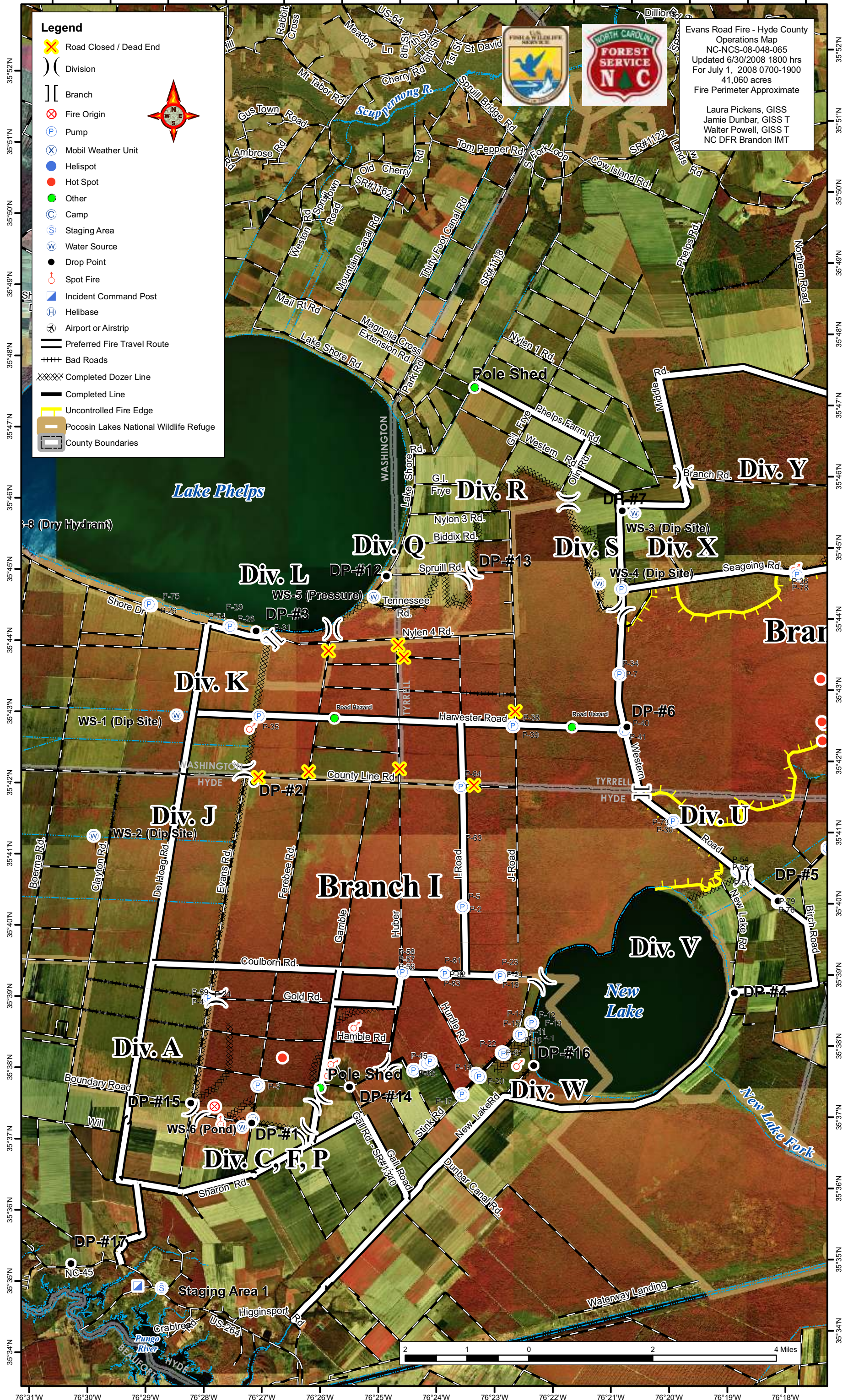
Legend

- Road Closed / Dead End
- Division
- Branch
- Fire Origin
- Pump
- Mobil Weather Unit
- Helispot
- Hot Spot
- Other
- Camp
- Staging Area
- Water Source
- Drop Point
- Spot Fire
- Incident Command Post
- Helibase
- Airport or Airstrip
- Preferred Fire Travel Route
- Bad Roads
- Completed Dozer Line
- Completed Line
- Uncontrolled Fire Edge
- Pocosin Lakes National Wildlife Refuge
- County Boundaries



Evans Road Fire - Hyde County
 Operations Map
 NC-NCS-08-048-065
 Updated 6/30/2008 1800 hrs
 For July 1, 2008 0700-1900
 41,060 acres
 Fire Perimeter Approximate

Laura Pickens, GISS
 Jamie Dunbar, GISS T
 Walter Powell, GISS T
 NC DFR Brandon IMT



76°31'W 76°30'W 76°29'W 76°28'W 76°27'W 76°26'W 76°25'W 76°24'W 76°23'W 76°22'W 76°21'W 76°20'W 76°19'W 76°18'W

Evans Road Fire - Hyde County
 Operations Map
 NC-NCS-08-048-065
 Updated 6/30/2008 1800 hrs
 For July 1, 2008 0700-1900
 41,060 acres
 Fire Perimeter Approximate

Laura Pickens GISS
 Walter Powell GISS T
 Jamie Dunbar GISS T
 NC DFR Brandon IMT

Legend

- Road Closed / Dead End
- Division
- Branch
- Fire Origin
- Pump
- Mobil Weather Unit
- Helispot
- Hot Spot
- Other
- Camp
- Staging Area
- Water Source
- Drop Point
- Spot Fire
- Incident Command Post
- Helibase
- Airport or Airstrip
- Preferred Fire Travel Route
- Bad Roads
- Roads
- Hydrology
- Completed Dozer Line
- Completed Line
- Uncontrolled Fire Edge
- Pocosin Lakes National Wildlife Refuge
- County Boundaries

