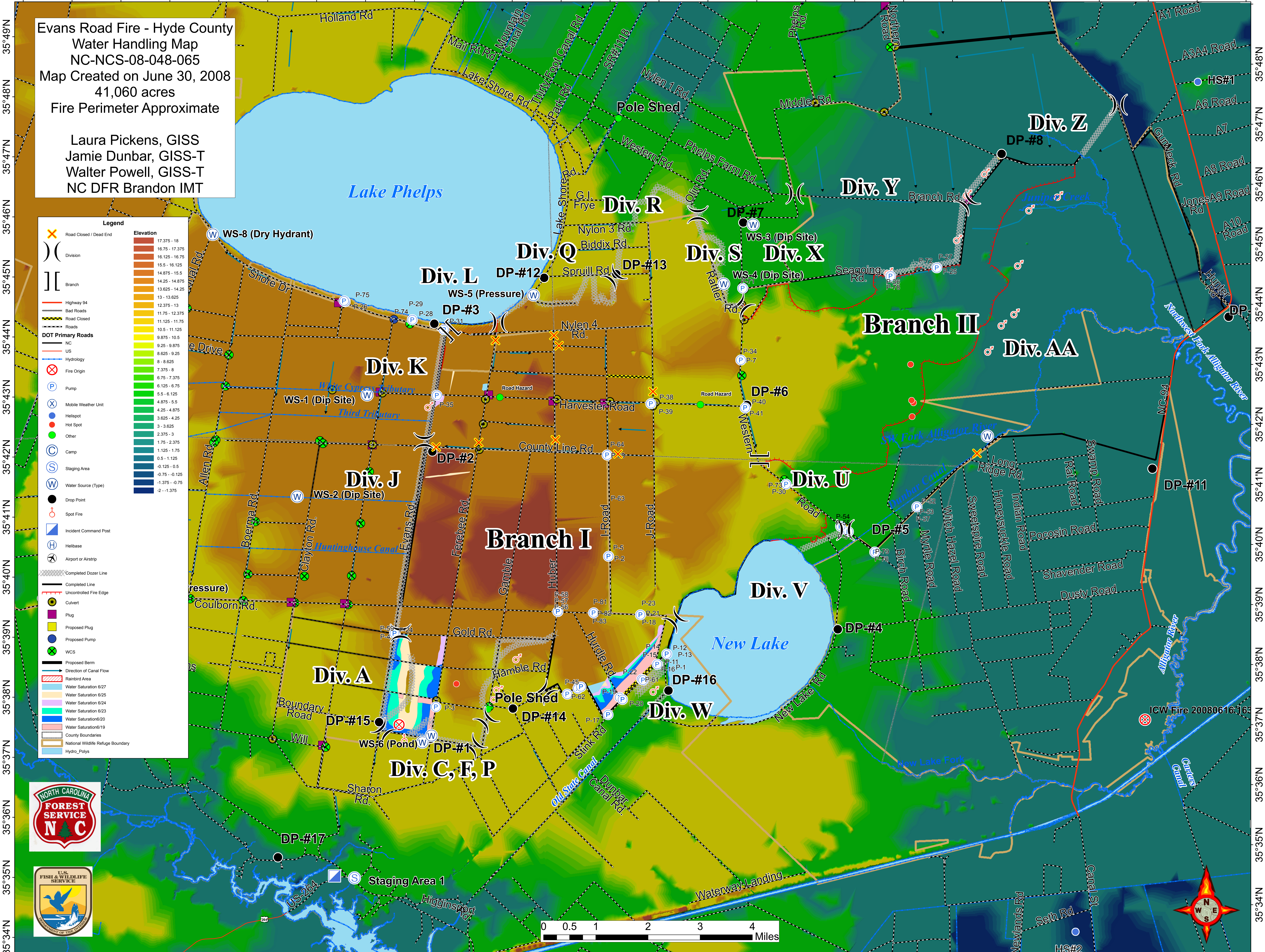


76°35'W 76°34'W 76°33'W 76°32'W 76°31'W 76°30'W 76°29'W 76°28'W 76°27'W 76°26'W 76°25'W 76°24'W 76°23'W 76°22'W 76°21'W 76°20'W 76°19'W 76°18'W 76°17'W 76°16'W 76°15'W 76°14'W 76°13'W 76°12'W 76°11'W 76°10'W



**Evans Road Fire - Hyde County**  
Water Handling Map  
NC-NCS-08-048-065  
Map Created on June 30, 2008  
41,060 acres  
Fire Perimeter Approximate

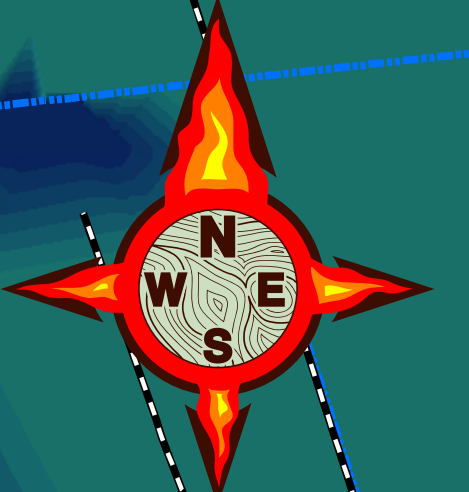
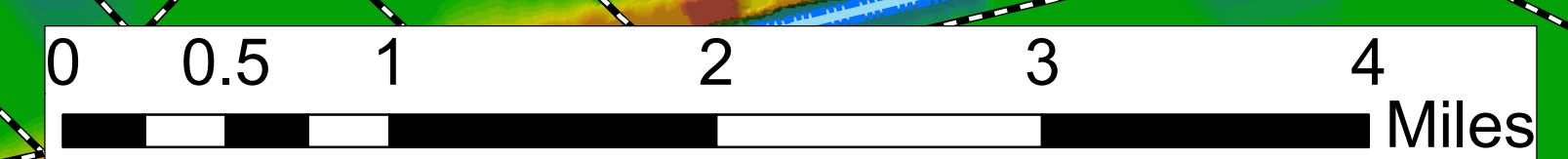
Laura Pickens, GISS  
Jamie Dunbar, GISS-T  
Walter Powell, GISS-T  
NC DFR Brandon IMT

**Legend**

- Road Closed / Dead End
- Division
- Branch
- Highway 94
- Bad Roads
- Road Closed
- Roads
- DOT Primary Roads
  - NC
  - US
- Hydrology
- Fire Origin
- Pump
- Mobile Weather Unit
- Hellspot
- Hot Spot
- Other
- Camp
- Staging Area
- Water Source (Type)
- Drop Point
- Spot Fire
- Incident Command Post
- Helibase
- Airport or Airstrip
- Completed Dozer Line
- Completed Line
- Uncontrolled Fire Edge
- Culvert
- Plug
- Proposed Plug
- Proposed Pump
- WCS
- Proposed Berm
- Direction of Canal Flow
- Rainbird Area
- Water Saturation 6/27
- Water Saturation 6/25
- Water Saturation 6/24
- Water Saturation 6/23
- Water Saturation 6/20
- Water Saturation 6/19
- County Boundaries
- National Wildlife Refuge Boundary
- Hydro\_Polys

**Elevation**

- 17.375 - 18
- 16.75 - 17.375
- 16.125 - 16.75
- 15.5 - 16.125
- 14.875 - 15.5
- 14.25 - 14.875
- 13.625 - 14.25
- 13 - 13.625
- 12.375 - 13
- 11.75 - 12.375
- 11.125 - 11.75
- 10.5 - 11.125
- 9.875 - 10.5
- 9.25 - 9.875
- 8.625 - 9.25
- 8 - 8.625
- 7.375 - 8
- 6.75 - 7.375
- 6.125 - 6.75
- 5.5 - 6.125
- 4.875 - 5.5
- 4.25 - 4.875
- 3.625 - 4.25
- 3 - 3.625
- 2.375 - 3
- 1.75 - 2.375
- 1.125 - 1.75
- 0.5 - 1.125
- 0.125 - 0.5
- 0.75 - -0.125
- 1.375 - -0.75
- 2 - -1.375



76°35'W 76°34'W 76°33'W 76°32'W 76°31'W 76°30'W 76°29'W 76°28'W 76°27'W 76°26'W 76°25'W 76°24'W 76°23'W 76°22'W 76°21'W 76°20'W 76°19'W 76°18'W 76°17'W 76°16'W 76°15'W 76°14'W 76°13'W 76°12'W 76°11'W 76°10'W