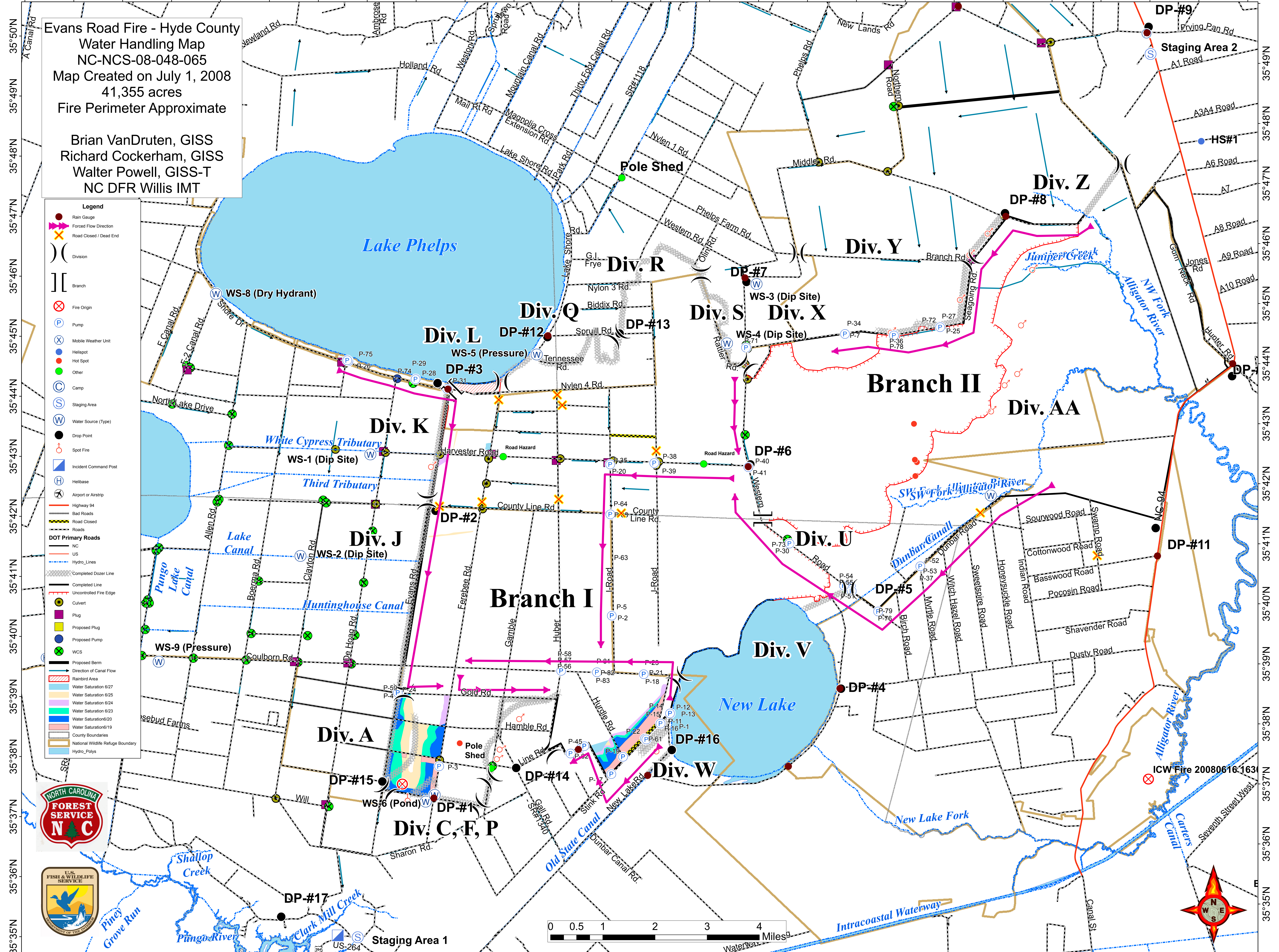


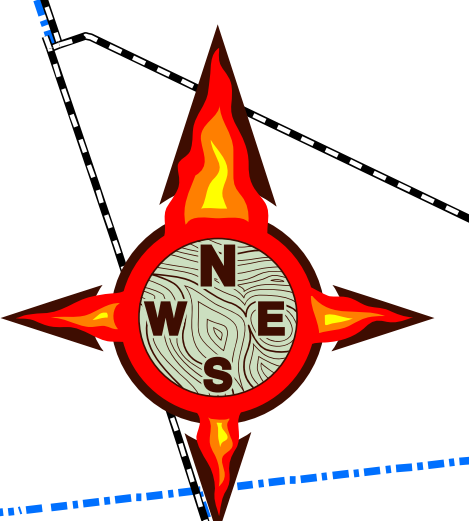
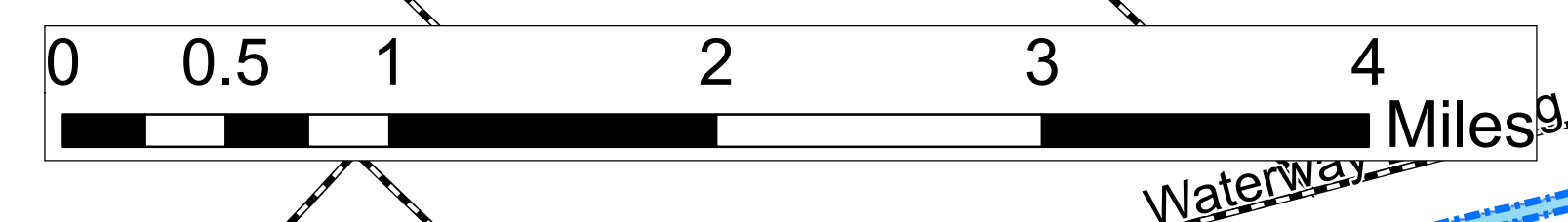
76°35'W 76°34'W 76°33'W 76°32'W 76°31'W 76°30'W 76°29'W 76°28'W 76°27'W 76°26'W 76°25'W 76°24'W 76°23'W 76°22'W 76°21'W 76°20'W 76°19'W 76°18'W 76°17'W 76°16'W 76°15'W 76°14'W 76°13'W 76°12'W 76°11'W 76°10'W



Evans Road Fire - Hyde County
Water Handling Map
NC-NCS-08-048-065
Map Created on July 1, 2008
41,355 acres
Fire Perimeter Approximate

Brian VanDruten, GISS
Richard Cockerham, GISS
Walter Powell, GISS-T
NC DFR Willis IMT

- Legend**
- Rain Gauge
 - Forced Flow Direction
 - Road Closed / Dead End
 - Division
 - Branch
 - Fire Origin
 - Pump
 - Mobile Weather Unit
 - Helispot
 - Hot Spot
 - Other
 - Camp
 - Staging Area
 - Water Source (Type)
 - Drop Point
 - Spot Fire
 - Incident Command Post
 - Helibase
 - Airport or Airstrip
 - Highway 94
 - Bad Roads
 - Road Closed
 - Roads
 - DOT Primary Roads
 - NC
 - US
 - Hydro_Lines
 - Completed Dozer Line
 - Completed Line
 - Uncontrolled Fire Edge
 - Culvert
 - Plug
 - Proposed Plug
 - Proposed Pump
 - WCS
 - Proposed Berm
 - Direction of Canal Flow
 - Rainbird Area
 - Water Saturation 6/27
 - Water Saturation 6/25
 - Water Saturation 6/24
 - Water Saturation 6/23
 - Water Saturation 6/20
 - Water Saturation 6/19
 - County Boundaries
 - National Wildlife Refuge Boundary
 - Hydro_Polys



76°35'W 76°34'W 76°33'W 76°32'W 76°31'W 76°30'W 76°29'W 76°28'W 76°27'W 76°26'W 76°25'W 76°24'W 76°23'W 76°22'W 76°21'W 76°20'W 76°19'W 76°18'W 76°17'W 76°16'W 76°15'W 76°14'W 76°13'W 76°12'W 76°11'W 76°10'W