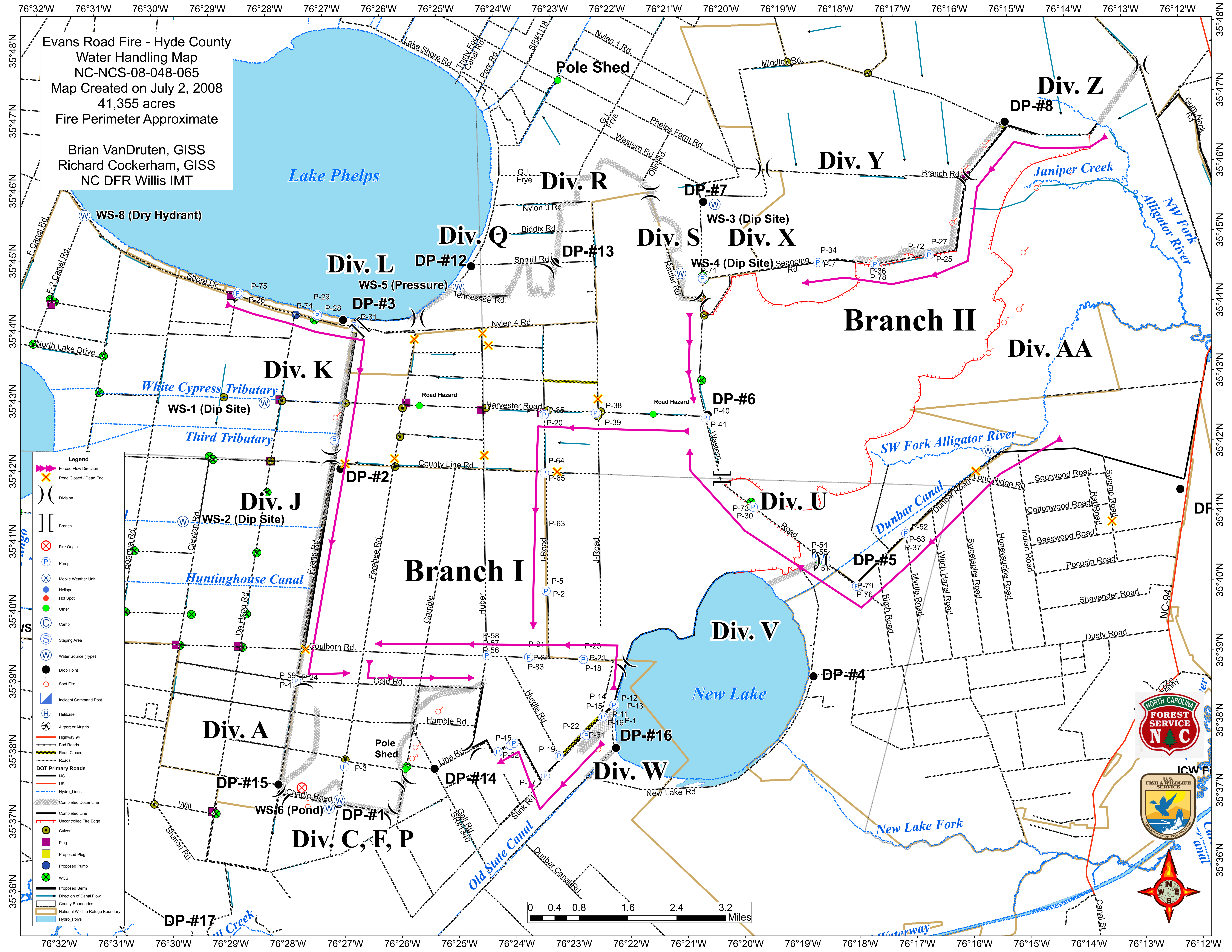


Evans Road Fire - Hyde County  
 Water Handling Map  
 NC-NCS-08-048-065  
 Map Created on July 2, 2008  
 41,355 acres  
 Fire Perimeter Approximate

Brian VanDrueten, GISS  
 Richard Cockerham, GISS  
 NC DFR Willis IMT



- Legend**
- Forced Flow Direction
  - Road Closed / Dead End
  - Division
  - Branch
  - Fire Origin
  - Pump
  - Mobile Weather Unit
  - Hellsport
  - Hot Spot
  - Other
  - Camp
  - Staging Area
  - Water Source (Type)
  - Drop Point
  - Spot Fire
  - Incident Command Post
  - Helibase
  - Airport or Airstrip
  - Highway 94
  - Bad Roads
  - Road Closed
  - Roads
  - DOT Primary Roads
  - NC
  - US
  - Hydro\_Lines
  - Completed Dozer Line
  - Completed Line
  - Uncontrolled Fire Edge
  - Culvert
  - Plug
  - Proposed Plug
  - Proposed Pump
  - WCS
  - Proposed Berm
  - Direction of Canal Flow
  - County Boundaries
  - National Wildlife Refuge Boundary
  - Hydro\_Polys

