

76°30'W 76°29'W 76°28'W 76°27'W 76°26'W 76°25'W 76°24'W 76°23'W 76°22'W 76°21'W 76°20'W 76°19'W 76°18'W 76°17'W

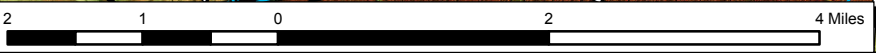
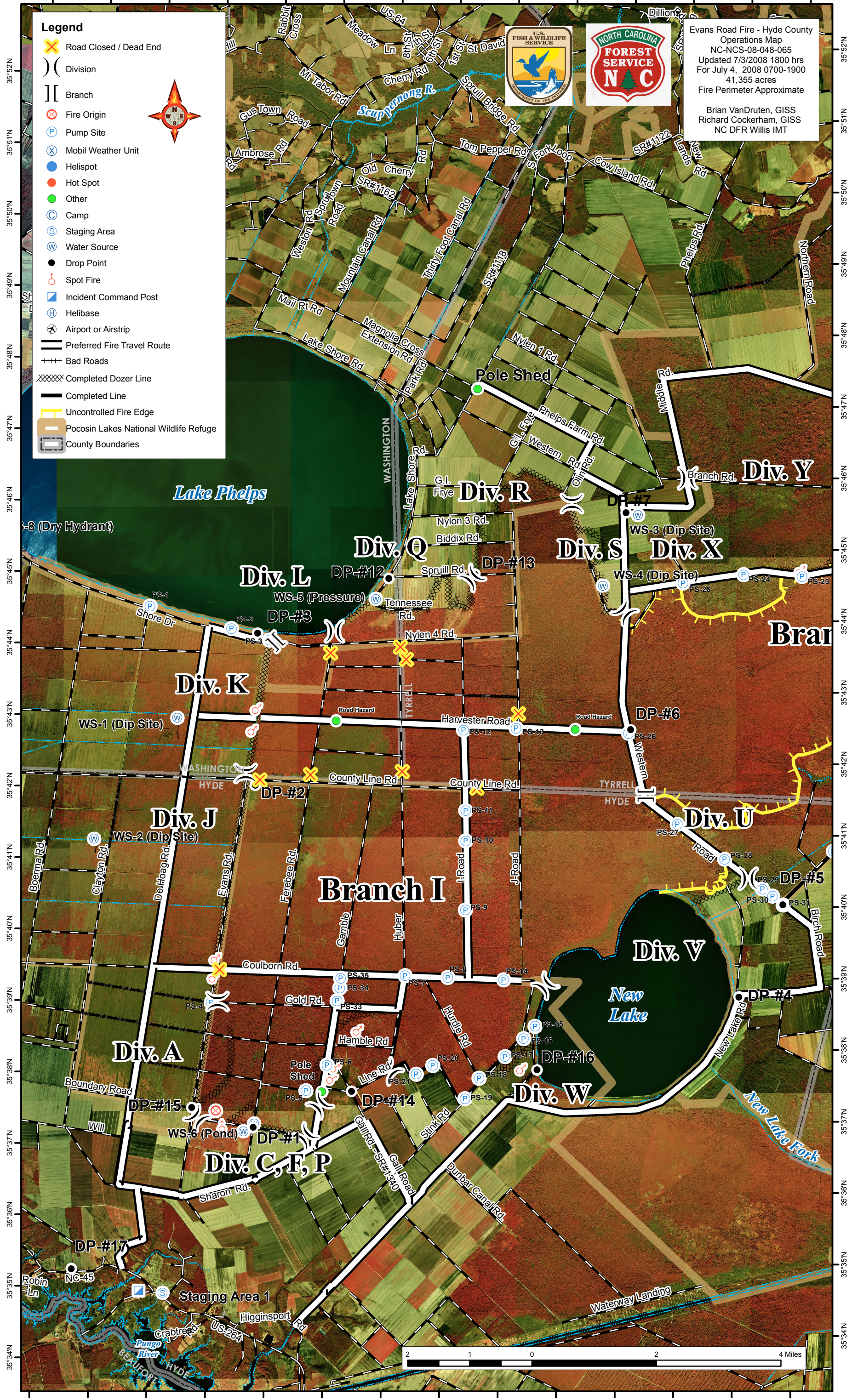
Legend

- Road Closed / Dead End
- Division
- Branch
- Fire Origin
- Pump Site
- Mobil Weather Unit
- Helispot
- Hot Spot
- Other
- Camp
- Staging Area
- Water Source
- Drop Point
- Spot Fire
- Incident Command Post
- Helibase
- Airport or Airstrip
- Preferred Fire Travel Route
- Bad Roads
- Completed Dozer Line
- Completed Line
- Uncontrolled Fire Edge
- Pocosin Lakes National Wildlife Refuge
- County Boundaries



Evans Road Fire - Hyde County
 Operations Map
 NC-NCS-08-048-065
 Updated 7/3/2008 1800 hrs
 For July 4, 2008 0700-1900
 41,355 acres
 Fire Perimeter Approximate

Brian VanDruten, GISS
 Richard Cockerham, GISS
 NC DFR Willis IMT



76°31'W 76°30'W 76°29'W 76°28'W 76°27'W 76°26'W 76°25'W 76°24'W 76°23'W 76°22'W 76°21'W 76°20'W 76°19'W 76°18'W

35°52'N 35°51'N 35°50'N 35°49'N 35°48'N 35°47'N 35°46'N 35°45'N 35°44'N 35°43'N 35°42'N 35°41'N 35°40'N 35°39'N 35°38'N 35°37'N 35°36'N 35°35'N 35°34'N

