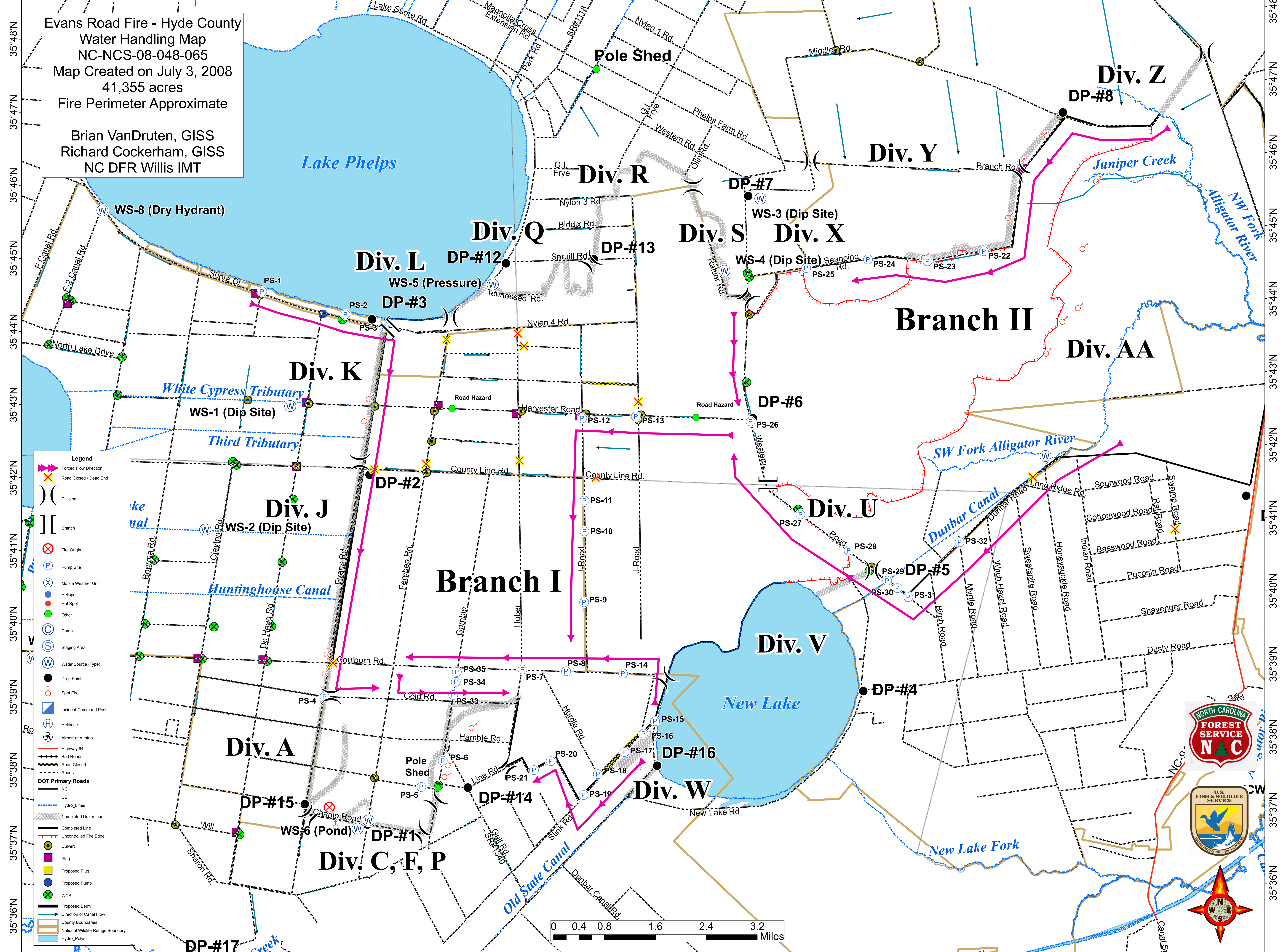
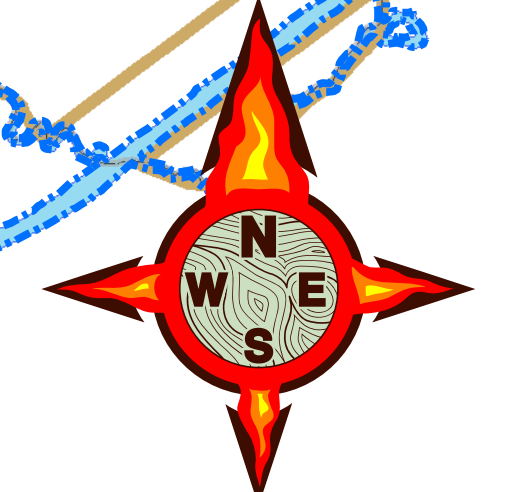


76°32'W 76°31'W 76°30'W 76°29'W 76°28'W 76°27'W 76°26'W 76°25'W 76°24'W 76°23'W 76°22'W 76°21'W 76°20'W 76°19'W 76°18'W 76°17'W 76°16'W 76°15'W 76°14'W 76°13'W 76°12'W

Evans Road Fire - Hyde County  
Water Handling Map  
NC-NCS-08-048-065  
Map Created on July 3, 2008  
41,355 acres  
Fire Perimeter Approximate  
  
Brian VanDruten, GISS  
Richard Cockerham, GISS  
NC DFR Willis IMT



- Legend**
- Forced Flow Direction
  - Road Closed / Dead End
  - Division
  - Branch
  - Fire Origin
  - Pump Site
  - Mobile Weather Unit
  - Hellspot
  - Hot Spot
  - Other
  - Camp
  - Staging Area
  - Water Source (Type)
  - Drop Point
  - Spot Fire
  - Incident Command Post
  - Helibase
  - Airport or Airstrip
  - Highway 94
  - Bad Roads
  - Road Closed
  - Roads
  - DOT Primary Roads
  - NC
  - US
  - Hydro\_Lines
  - Completed Dozer Line
  - Completed Line
  - Uncontrolled Fire Edge
  - Culvert
  - Plug
  - Proposed Plug
  - Proposed Pump
  - WCS
  - Proposed Berm
  - Direction of Canal Flow
  - County Boundaries
  - National Wildlife Refuge Boundary
  - Hydro\_Polys



0 0.4 0.8 1.6 2.4 3.2 Miles

76°32'W 76°31'W 76°30'W 76°29'W 76°28'W 76°27'W 76°26'W 76°25'W 76°24'W 76°23'W 76°22'W 76°21'W 76°20'W 76°19'W 76°18'W 76°17'W 76°16'W 76°15'W 76°14'W 76°13'W

35°48'N  
35°47'N  
35°46'N  
35°45'N  
35°44'N  
35°43'N  
35°42'N  
35°41'N  
35°40'N  
35°39'N  
35°38'N  
35°37'N  
35°36'N

35°48'N  
35°47'N  
35°46'N  
35°45'N  
35°44'N  
35°43'N  
35°42'N  
35°41'N  
35°40'N  
35°39'N  
35°38'N  
35°37'N  
35°36'N