

76°31'W 76°30'W 76°29'W 76°28'W 76°27'W 76°26'W 76°25'W 76°24'W 76°23'W 76°22'W 76°21'W 76°20'W 76°19'W 76°18'W 76°17'W 76°16'W 76°15'W 76°14'W 76°13'W 76°12'W 76°11'W

35°48'N 35°47'N 35°46'N 35°45'N 35°44'N 35°43'N 35°42'N 35°41'N 35°40'N 35°39'N 35°38'N 35°37'N 35°36'N 35°35'N

Evans Road Fire - Hyde County
IR Flight Map
NC-NCS-08-048-065
Map Created on July 2, 2008
41,355 acres
Fire Perimeter Approximate

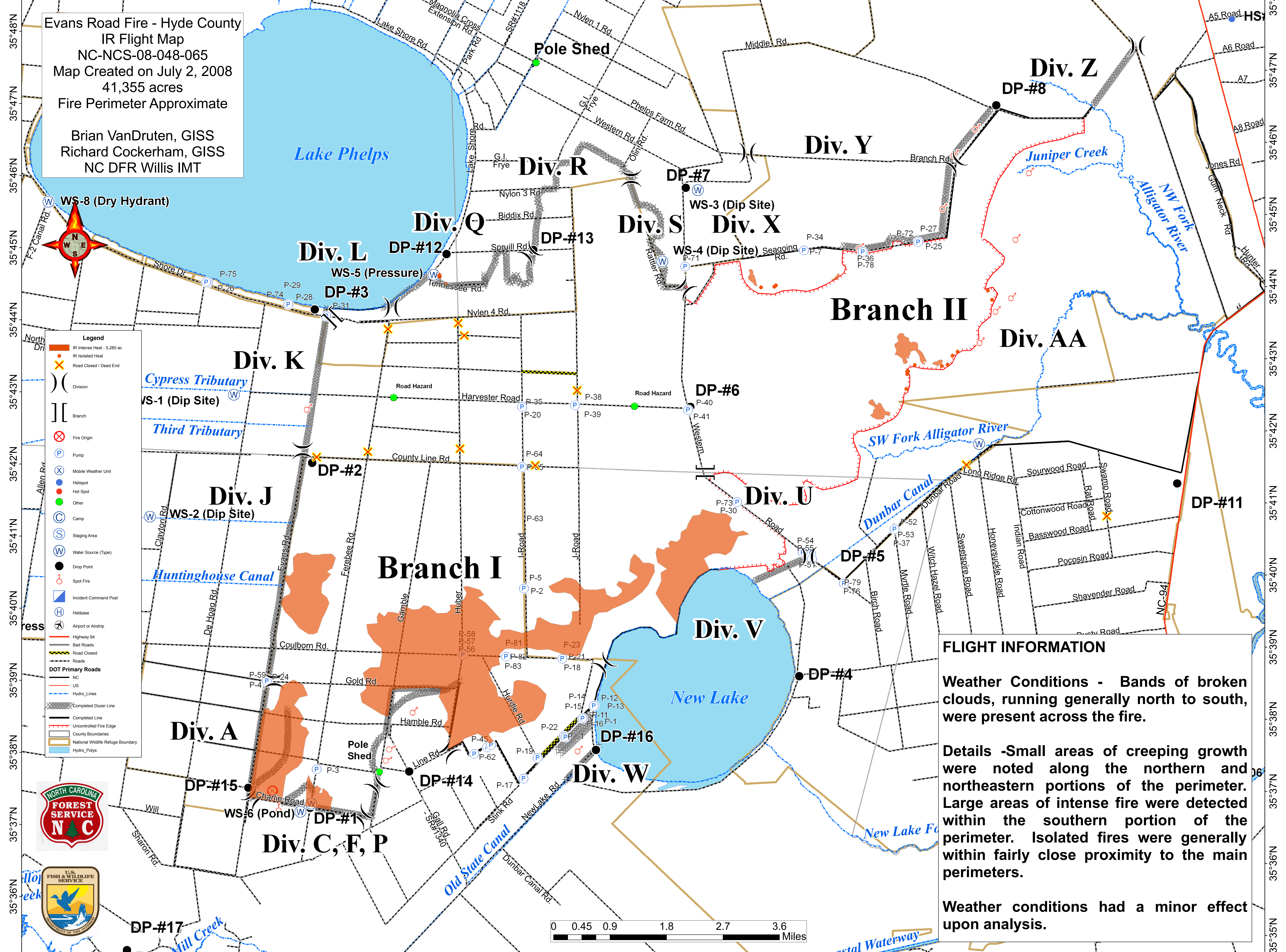
Brian VanDruten, GISS
Richard Cockerham, GISS
NC DFR Willis IMT



- Legend**
- IR Intense Heat - 5,280 ac
 - IR Isolated Heat
 - Road Closed / Dead End
 - Division
 - Branch
 - Fire Origin
 - Pump
 - Mobile Weather Unit
 - Helispot
 - Hot Spot
 - Other
 - Camp
 - Staging Area
 - Water Source (Type)
 - Drop Point
 - Spot Fire
 - Incident Command Post
 - Helibase
 - Airport or Airstrip
 - Highway 94
 - Bad Roads
 - Road Closed
 - Roads
 - DOT Primary Roads
 - NC
 - US
 - Hydro_Lines
 - Completed Dozer Line
 - Completed Line
 - Uncontrolled Fire Edge
 - County Boundaries
 - National Wildlife Refuge Boundary
 - Hydro_Polys



76°32'W 76°31'W 76°30'W 76°29'W 76°28'W 76°27'W 76°26'W 76°25'W 76°24'W 76°23'W 76°22'W 76°21'W 76°20'W 76°19'W 76°18'W 76°17'W 76°16'W 76°15'W 76°14'W 76°13'W 76°12'W 76°11'W



FLIGHT INFORMATION

Weather Conditions - Bands of broken clouds, running generally north to south, were present across the fire.

Details - Small areas of creeping growth were noted along the northern and northeastern portions of the perimeter. Large areas of intense fire were detected within the southern portion of the perimeter. Isolated fires were generally within fairly close proximity to the main perimeters.

Weather conditions had a minor effect upon analysis.

