

76°30'W 76°29'W 76°28'W 76°27'W 76°26'W 76°25'W 76°24'W 76°23'W 76°22'W 76°21'W 76°20'W 76°19'W 76°18'W 76°17'W

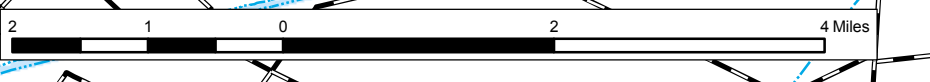
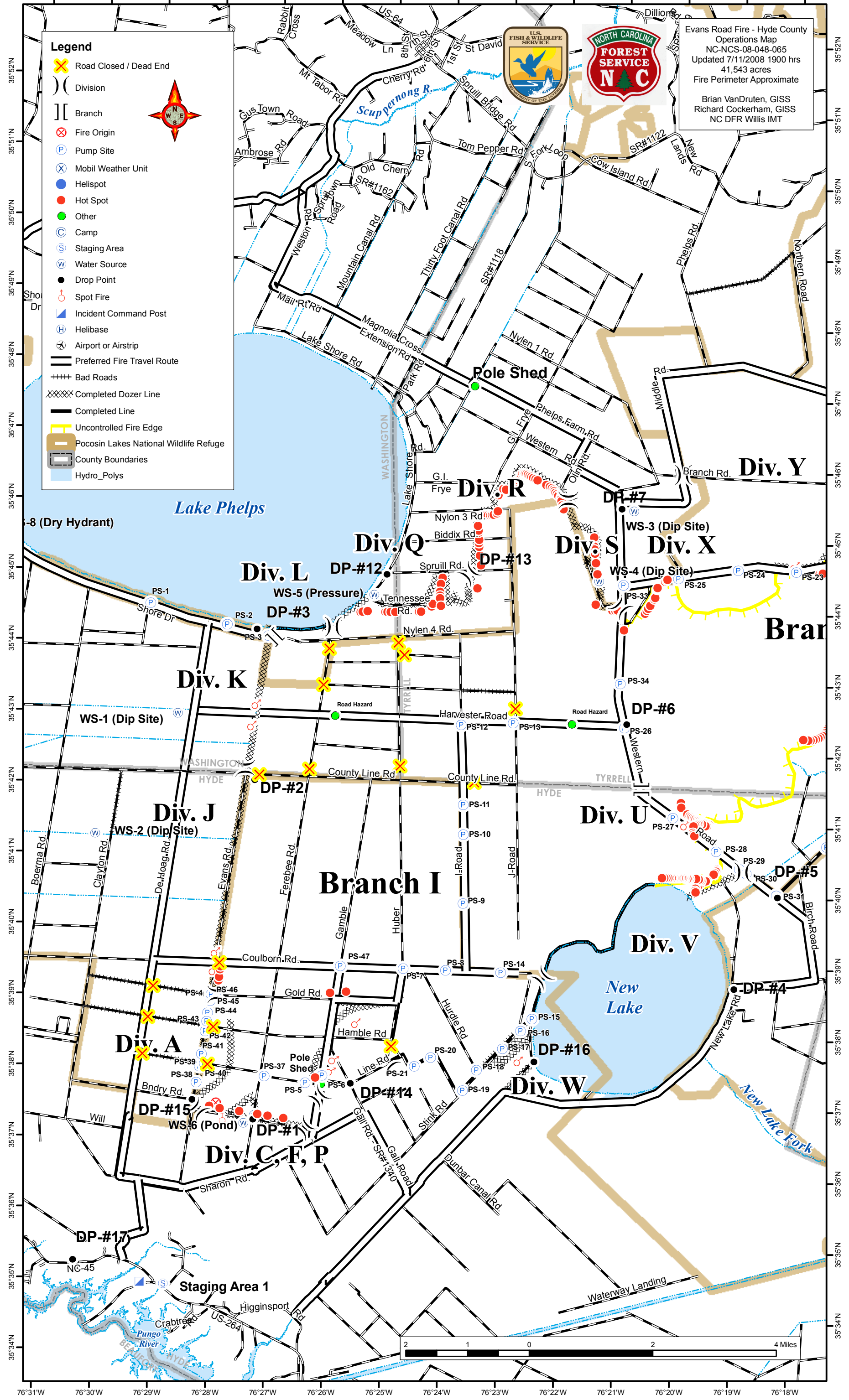
Legend

- ✕ Road Closed / Dead End
-) Division
- || Branch
- ⊗ Fire Origin
- P Pump Site
- ⊗ Mobil Weather Unit
- Helispot
- Hot Spot
- Other
- C Camp
- S Staging Area
- W Water Source
- Drop Point
- ⊙ Spot Fire
- ▣ Incident Command Post
- H Helibase
- ✈ Airport or Airstrip
- ▬ Preferred Fire Travel Route
- ++++ Bad Roads
- XXXXX Completed Dozer Line
- ▬ Completed Line
- ▬ Uncontrolled Fire Edge
- ▭ Pocosin Lakes National Wildlife Refuge
- ▭ County Boundaries
- ▭ Hydro_Polys



Evans Road Fire - Hyde County
 Operations Map
 NC-NCS-08-048-065
 Updated 7/11/2008 1900 hrs
 41,543 acres
 Fire Perimeter Approximate

Brian VanDruten, GISS
 Richard Cockerham, GISS
 NC DFR Willis IMT



76°31'W 76°30'W 76°29'W 76°28'W 76°27'W 76°26'W 76°25'W 76°24'W 76°23'W 76°22'W 76°21'W 76°20'W 76°19'W 76°18'W