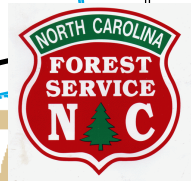


76°30'W 76°29'W 76°28'W 76°27'W 76°26'W 76°25'W 76°24'W 76°23'W 76°22'W 76°21'W 76°20'W 76°19'W 76°18'W 76°17'W

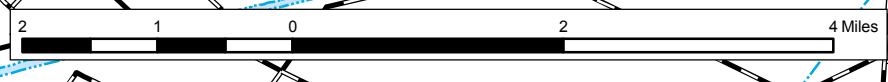
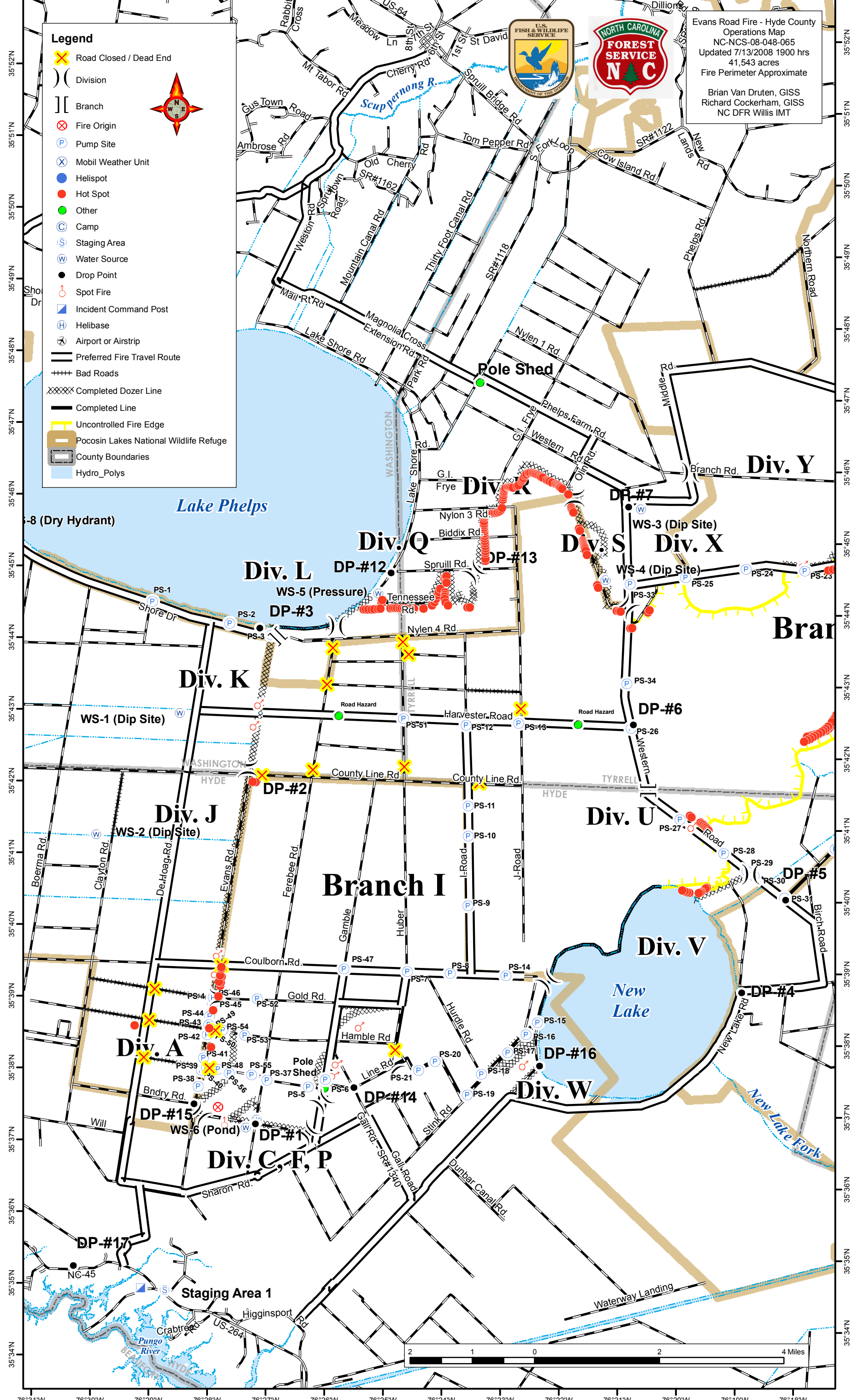
Legend

- Road Closed / Dead End
- Division
- Branch
- Fire Origin
- Pump Site
- Mobil Weather Unit
- Helispot
- Hot Spot
- Other
- Camp
- Staging Area
- Water Source
- Drop Point
- Spot Fire
- Incident Command Post
- Helibase
- Airport or Airstrip
- Preferred Fire Travel Route
- Bad Roads
- Completed Dozer Line
- Completed Line
- Uncontrolled Fire Edge
- Pocosin Lakes National Wildlife Refuge
- County Boundaries
- Hydro_Polys



Evans Road Fire - Hyde County
 Operations Map
 NC-NCS-08-048-065
 Updated 7/13/2008 1900 hrs
 41,543 acres
 Fire Perimeter Approximate

Brian Van Druten, GISS
 Richard Cockerham, GISS
 NC DFR Willis IMT



76°31'W 76°30'W 76°29'W 76°28'W 76°27'W 76°26'W 76°25'W 76°24'W 76°23'W 76°22'W 76°21'W 76°20'W 76°19'W 76°18'W