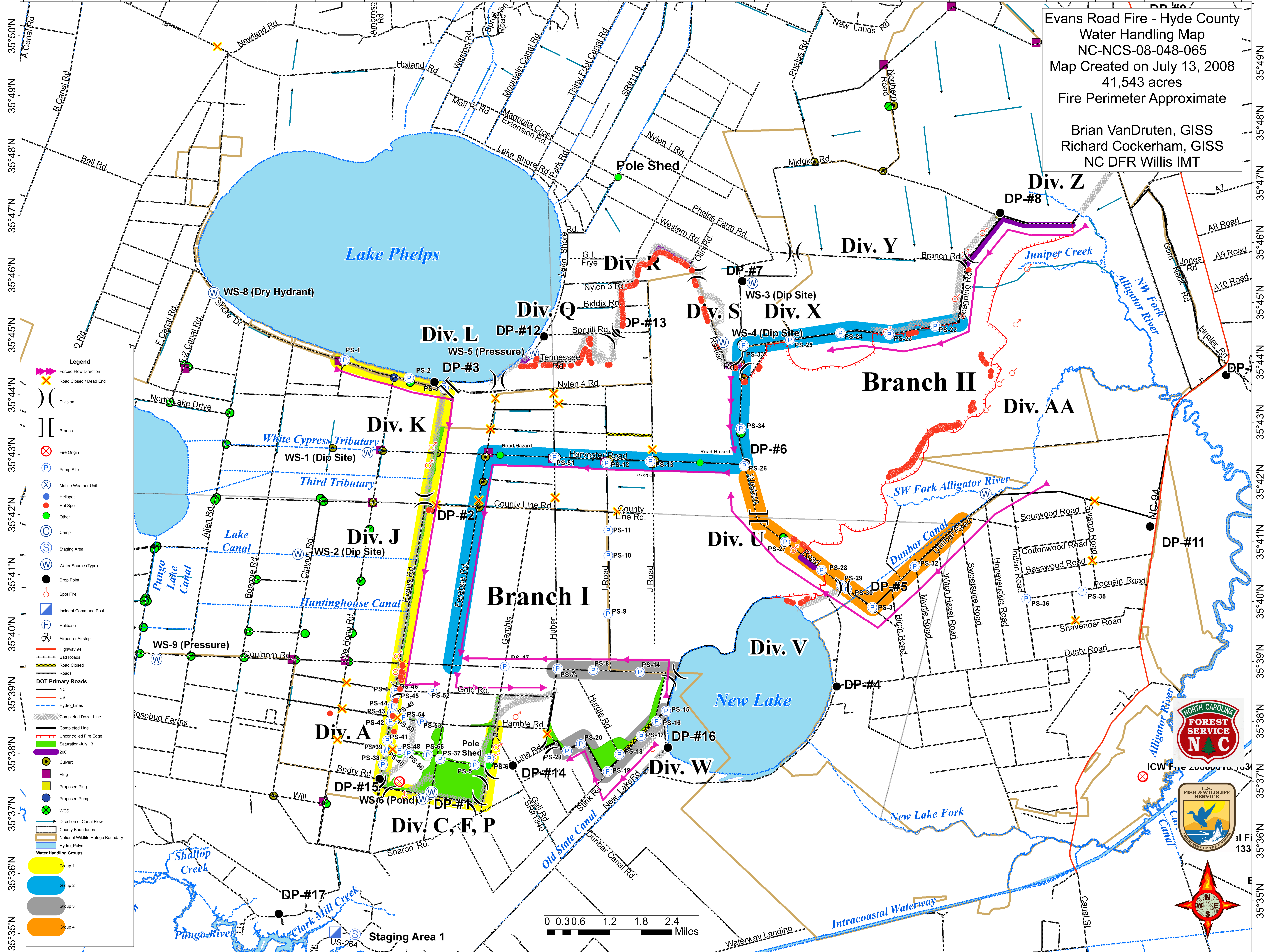


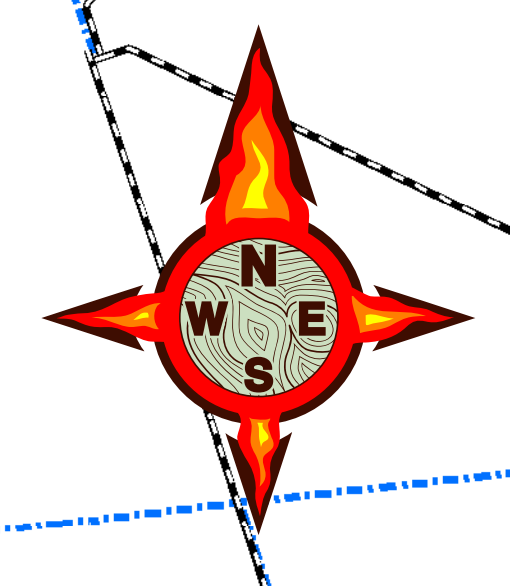
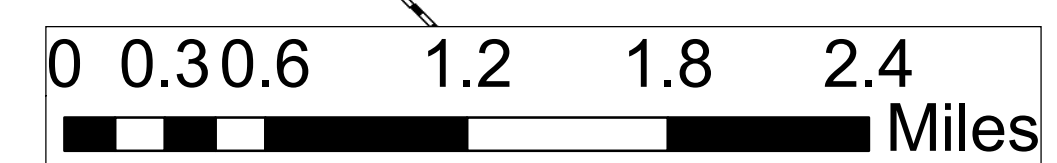
76°35'W 76°34'W 76°33'W 76°32'W 76°31'W 76°30'W 76°29'W 76°28'W 76°27'W 76°26'W 76°25'W 76°24'W 76°23'W 76°22'W 76°21'W 76°20'W 76°19'W 76°18'W 76°17'W 76°16'W 76°15'W 76°14'W 76°13'W 76°12'W 76°11'W 76°10'W

Evans Road Fire - Hyde County  
Water Handling Map  
NC-NCS-08-048-065  
Map Created on July 13, 2008  
41,543 acres  
Fire Perimeter Approximate  
  
Brian VanDruten, GISS  
Richard Cockerham, GISS  
NC DFR Willis IMT



**Legend**

- Forced Flow Direction
- Road Closed / Dead End
- Division
- Branch
- Fire Origin
- Pump Site
- Mobile Weather Unit
- Hot Spot
- Other
- Camp
- Staging Area
- Water Source (Type)
- Drop Point
- Spot Fire
- Incident Command Post
- Helibase
- Airport or Airstrip
- Highway 94
- Bad Roads
- Road Closed
- Roads
- DOT Primary Roads
- NC
- US
- Hydro\_Lines
- Completed Dozer Line
- Completed Line
- Uncontrolled Fire Edge
- Saturation-July 13 2008
- Culvert
- Plug
- Proposed Plug
- Proposed Pump
- WCS
- Direction of Canal Flow
- County Boundaries
- National Wildlife Refuge Boundary
- Hydro\_Polys
- Water Handling Groups
- Group 1
- Group 2
- Group 3
- Group 4



76°35'W 76°34'W 76°33'W 76°32'W 76°31'W 76°30'W 76°29'W 76°28'W 76°27'W 76°26'W 76°25'W 76°24'W 76°23'W 76°22'W 76°21'W 76°20'W 76°19'W 76°18'W 76°17'W 76°16'W 76°15'W 76°14'W 76°13'W 76°12'W 76°11'W 76°10'W