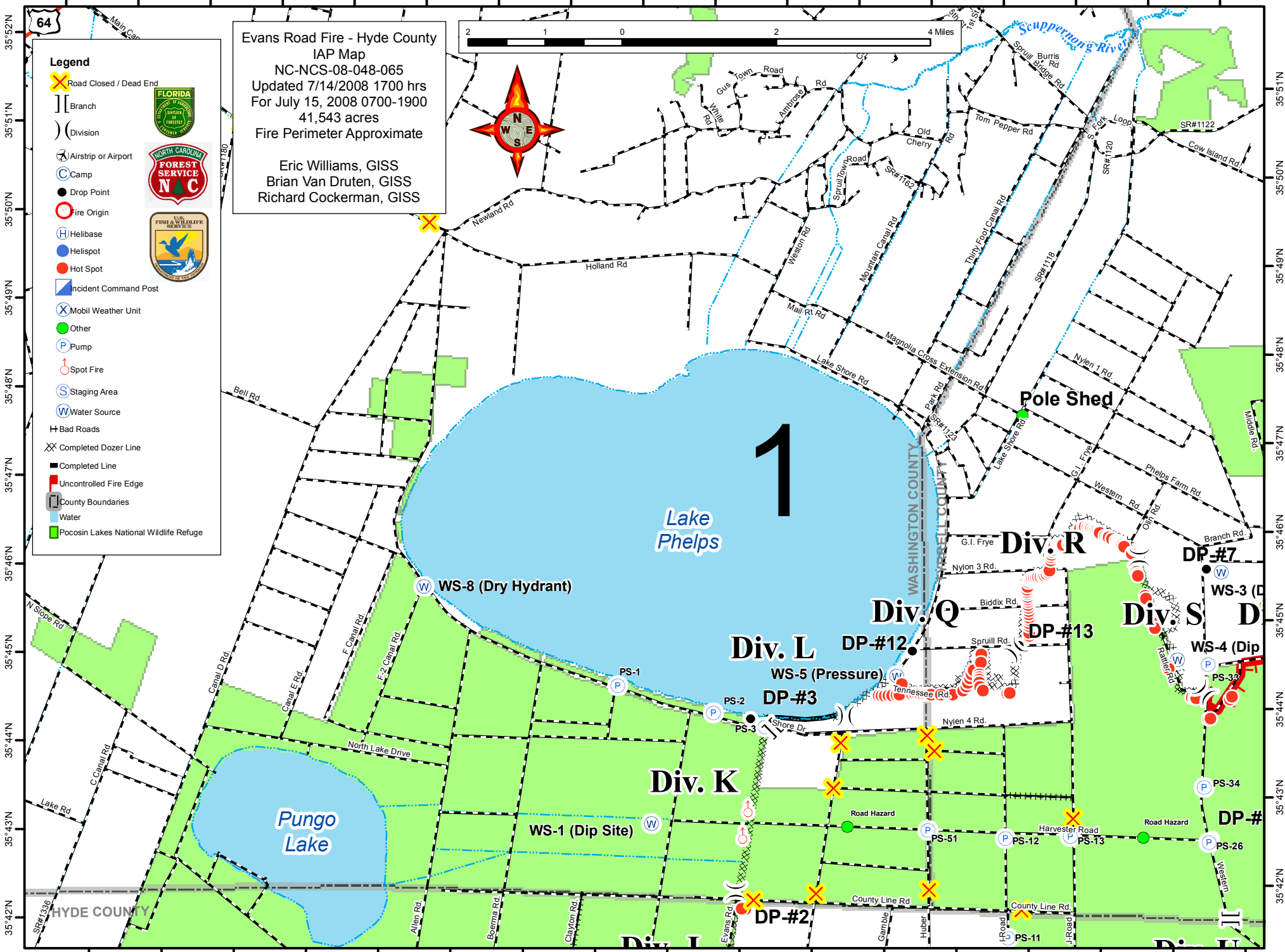


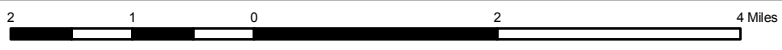
76°36'W 76°35'W 76°34'W 76°33'W 76°32'W 76°31'W 76°30'W 76°29'W 76°28'W 76°27'W 76°26'W 76°25'W 76°24'W 76°23'W 76°22'W 76°21'W 76°20'W



Evans Road Fire - Hyde County  
 IAP Map  
 NC-NCS-08-048-065  
 Updated 7/14/2008 1700 hrs  
 For July 15, 2008 0700-1900  
 41,543 acres  
 Fire Perimeter Approximate

Eric Williams, GISS  
 Brian Van Druten, GISS  
 Richard Cockerman, GISS

- Legend**
- Road Closed / Dead End
  - Branch
  - Division
  - Airstrip or Airport
  - Camp
  - Drop Point
  - Fire Origin
  - Helibase
  - Helispot
  - Hot Spot
  - Incident Command Post
  - Mobil Weather Unit
  - Other
  - Pump
  - Spot Fire
  - Staging Area
  - Water Source
  - Bad Roads
  - Completed Dozer Line
  - Completed Line
  - Uncontrolled Fire Edge
  - County Boundaries
  - Water
  - Pocosin Lakes National Wildlife Refuge



35°52'N  
35°51'N  
35°50'N  
35°49'N  
35°48'N  
35°47'N  
35°46'N  
35°45'N  
35°44'N  
35°43'N  
35°42'N

35°51'N  
35°50'N  
35°49'N  
35°48'N  
35°47'N  
35°46'N  
35°45'N  
35°44'N  
35°43'N  
35°42'N

76°36'W 76°35'W 76°34'W 76°33'W 76°32'W 76°31'W 76°30'W 76°29'W 76°28'W 76°27'W 76°26'W 76°25'W 76°24'W 76°23'W 76°22'W 76°21'W 76°20'W