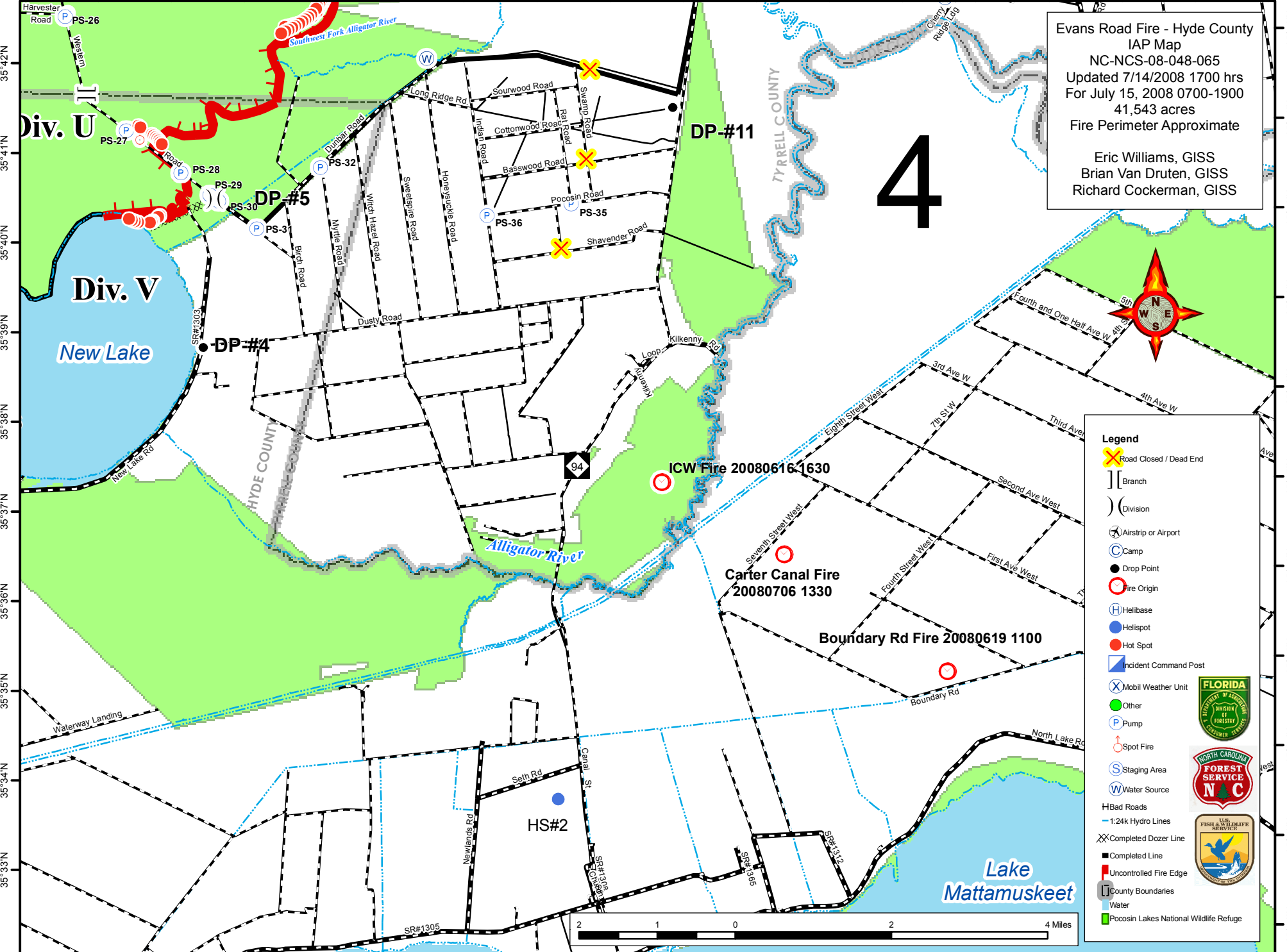


76°21'W 76°20'W 76°19'W 76°18'W 76°17'W 76°16'W 76°15'W 76°14'W 76°13'W 76°12'W 76°11'W 76°10'W 76°9'W 76°8'W 76°7'W 76°6'W 76°5'W 76°4'W



Evans Road Fire - Hyde County
IAP Map
NC-NCS-08-048-065
Updated 7/14/2008 1700 hrs
For July 15, 2008 0700-1900
41,543 acres
Fire Perimeter Approximate




Eric Williams, GISS
Brian Van Druten, GISS
Richard Cockerman, GISS

4



Legend

- Road Closed / Dead End
- Branch
- Division
- Airstrip or Airport
- Camp
- Drop Point
- Fire Origin
- Helibase
- Helispot
- Hot Spot
- Incident Command Post
- Mobil Weather Unit
- Other
- Pump
- Spot Fire
- Staging Area
- Water Source
- HBad Roads
- 1:24k Hydro Lines
- Completed Dozer Line
- Completed Line
- Uncontrolled Fire Edge
- County Boundaries
- Water
- Pocosin Lakes National Wildlife Refuge


76°21'W 76°20'W 76°19'W 76°18'W 76°17'W 76°16'W 76°15'W 76°14'W 76°13'W 76°12'W 76°11'W 76°10'W 76°9'W 76°8'W 76°7'W 76°6'W 76°5'W 76°4'W

35°42'N
35°41'N
35°40'N
35°39'N
35°38'N
35°37'N
35°36'N
35°35'N
35°34'N
35°33'N
35°32'N

35°42'N
35°41'N
35°40'N
35°39'N
35°38'N
35°37'N
35°36'N
35°35'N
35°34'N
35°33'N
35°32'N