

76°30'W 76°29'W 76°28'W 76°27'W 76°26'W 76°25'W 76°24'W 76°23'W 76°22'W 76°21'W 76°20'W 76°19'W 76°18'W 76°17'W

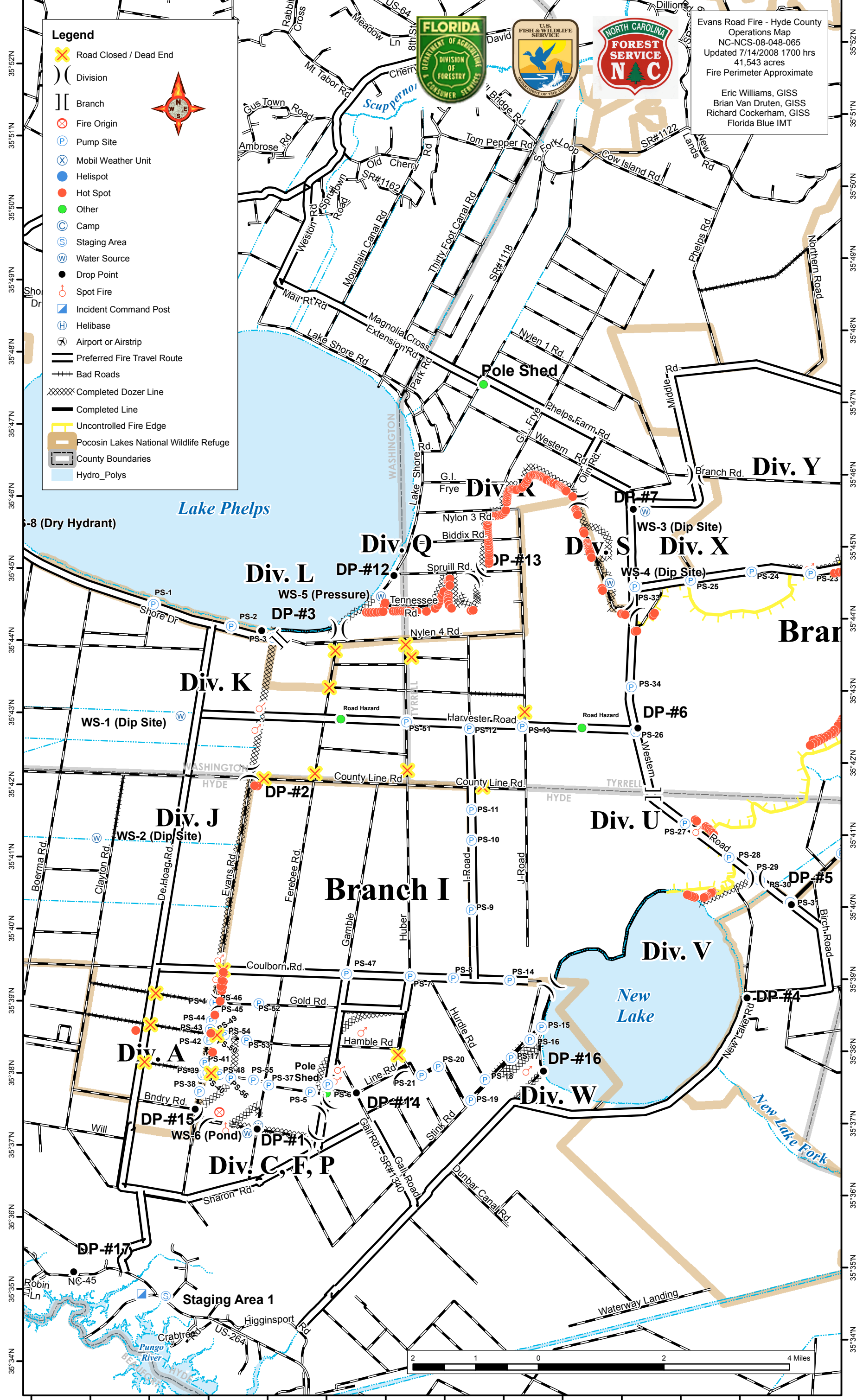
Legend

- ✕ Road Closed / Dead End
-) Division
-] Branch
- ⊗ Fire Origin
- Ⓟ Pump Site
- Ⓧ Mobil Weather Unit
- Ⓢ Helispot
- Hot Spot
- Other
- Ⓢ Camp
- Ⓢ Staging Area
- Ⓢ Water Source
- Drop Point
- Ⓢ Spot Fire
- Ⓢ Incident Command Post
- Ⓢ Helibase
- Ⓢ Airport or Airstrip
- Preferred Fire Travel Route
- ++++ Bad Roads
- XXXXX Completed Dozer Line
- Completed Line
- Uncontrolled Fire Edge
- ▭ Pocosin Lakes National Wildlife Refuge
- ▭ County Boundaries
- ▭ Hydro_Polys



Evans Road Fire - Hyde County
 Operations Map
 NC-NCS-08-048-065
 Updated 7/14/2008 1700 hrs
 41,543 acres
 Fire Perimeter Approximate

Eric Williams, GISS
 Brian Van Druten, GISS
 Richard Cockerham, GISS
 Florida Blue IMT



76°31'W 76°30'W 76°29'W 76°28'W 76°27'W 76°26'W 76°25'W 76°24'W 76°23'W 76°22'W 76°21'W 76°20'W 76°19'W 76°18'W

35°52'N
35°51'N
35°50'N
35°49'N
35°48'N
35°47'N
35°46'N
35°45'N
35°44'N
35°43'N
35°42'N
35°41'N
35°40'N
35°39'N
35°38'N
35°37'N
35°36'N
35°35'N
35°34'N

Evans Road Fire - Hyde County
 Operations Map
 NC-NCS-08-048-065
 Updated 7/14/2008 1700 hrs
 41,543 acres
 Fire Perimeter Approximate

Eric Williams, GISS
 Brian Van Druen GISS
 Richard Cockerham GISS
 Florida Blue IMT



Legend

- Road Closed / Dead End
- Division
- Branch
- Fire Origin
- Pump Site
- Mobil Weather Unit
- Helispot
- Hot Spot
- Other
- Camp
- Staging Area
- Water Source
- Drop Point
- Spot Fire
- Incident Command Pos
- Helibase
- Airport or Airstrip
- Preferred Fire Travel Route
- Bad Roads
- Roads
- Hydrology
- Completed Dozer Line
- Completed Line
- Uncontrolled Fire Edge
- Pocosin Lakes National Wildlife Refuge
- County Boundaries
- Hydro_Polys

