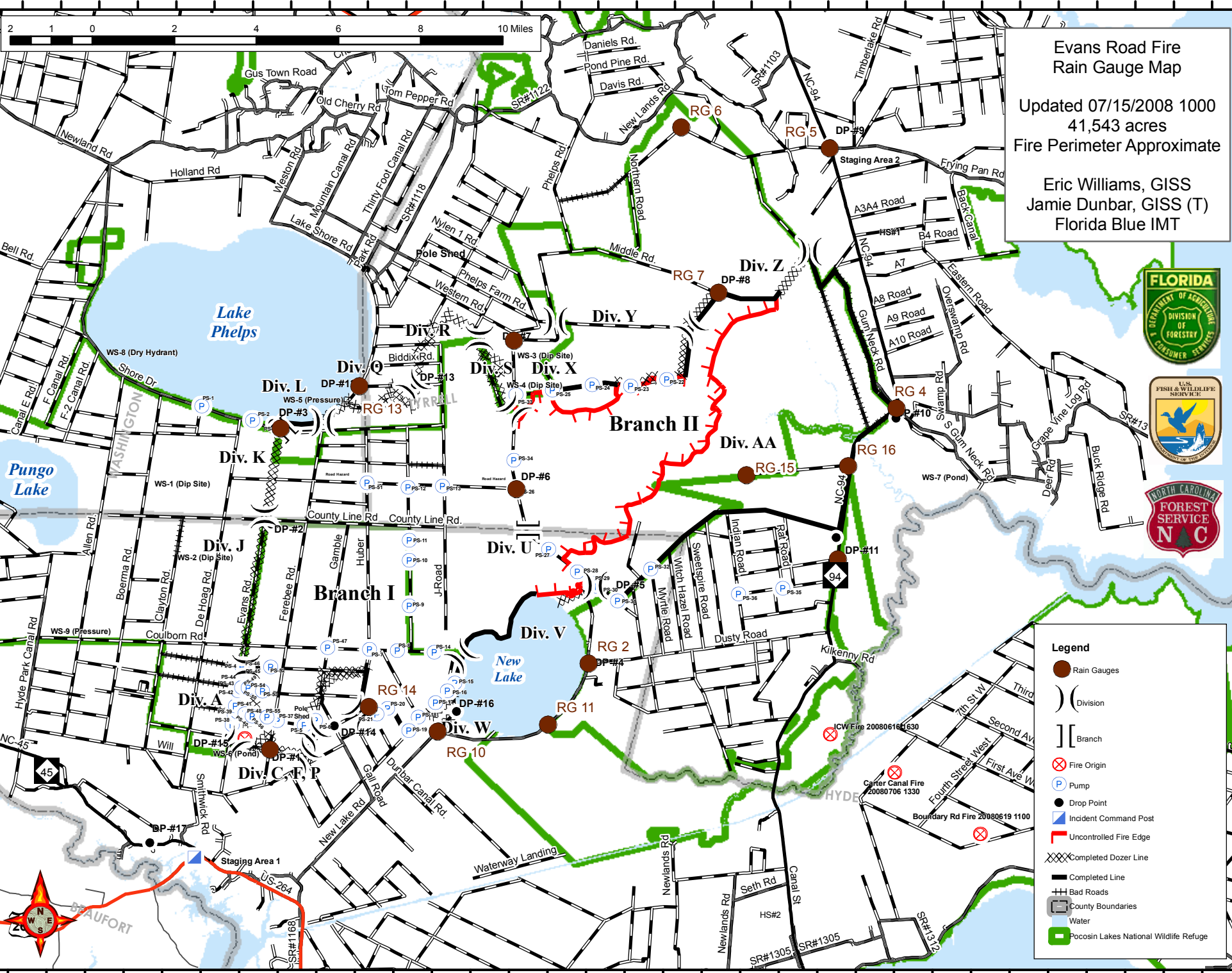


76°33'W 76°31'W 76°29'W 76°27'W 76°25'W 76°23'W 76°21'W 76°19'W 76°17'W 76°15'W 76°13'W 76°11'W 76°9'W 76°8'W 76°7'W 76°6'W 76°5'W 76°4'W 76°3'W 76°2'W



76°33'W 76°31'W 76°29'W 76°27'W 76°25'W 76°23'W 76°21'W 76°19'W 76°17'W 76°15'W 76°13'W 76°11'W 76°9'W 76°8'W 76°7'W 76°6'W 76°5'W 76°4'W 76°3'W

**Evans Road Fire
Rain Gauge Map**
Updated 07/15/2008 1000
41,543 acres
Fire Perimeter Approximate

Eric Williams, GISS
Jamie Dunbar, GISS (T)
Florida Blue IMT



Legend

- Rain Gauges
- Division
- Branch
- Fire Origin
- Pump
- Drop Point
- Incident Command Post
- Uncontrolled Fire Edge
- Completed Dozer Line
- Completed Line
- Bad Roads
- County Boundaries
- Water
- Pocosin Lakes National Wildlife Refuge



35°33'N 35°34'N 35°35'N 35°36'N 35°37'N 35°38'N 35°39'N 35°40'N 35°41'N 35°42'N 35°43'N 35°44'N 35°45'N 35°46'N 35°47'N 35°48'N 35°49'N 35°50'N 35°51'N 35°52'N