

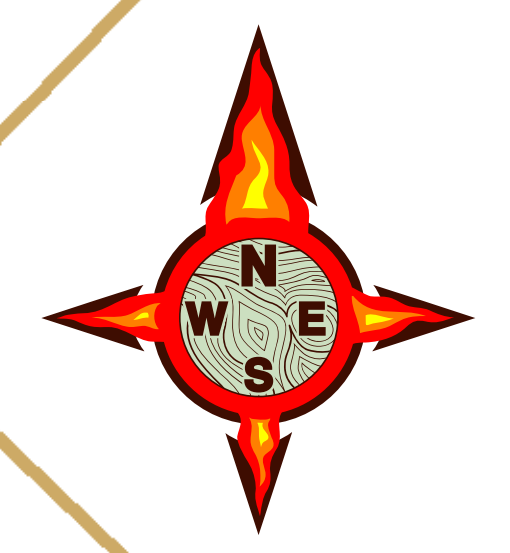
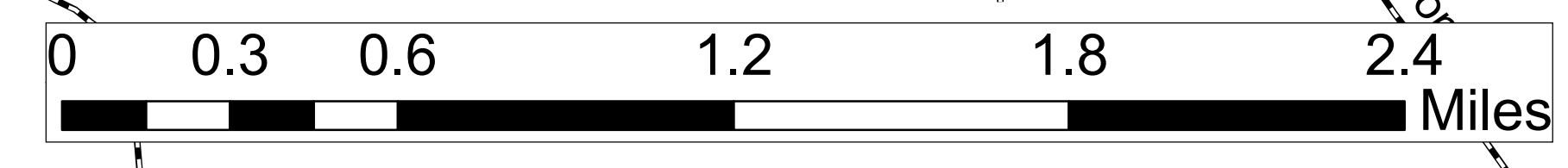
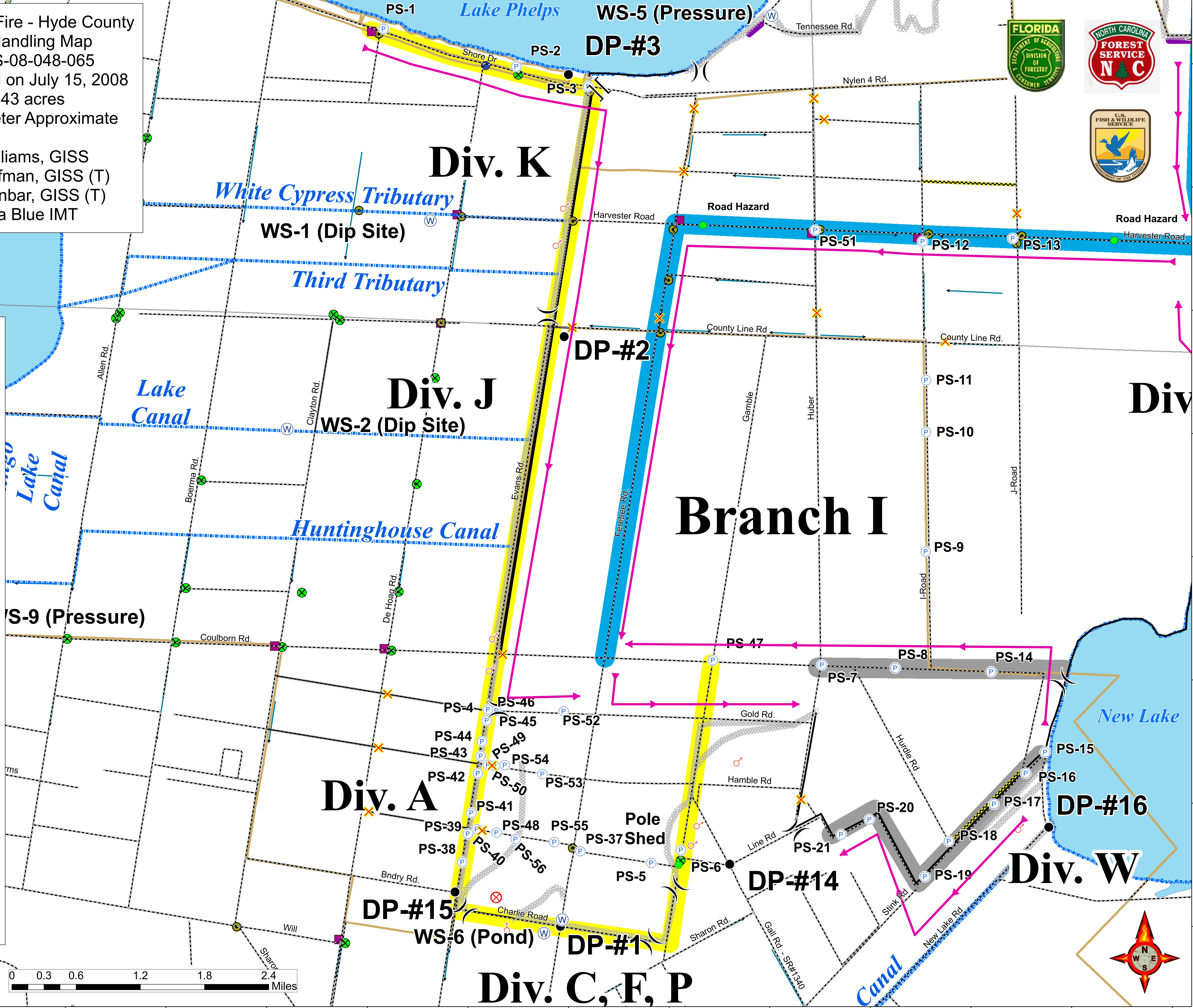
76°33'W 76°32'W 76°31'W 76°30'W 76°29'W 76°28'W 76°27'W 76°26'W 76°25'W 76°24'W 76°23'W 76°22'W 76°21'W

Evans Road Fire - Hyde County  
Water Handling Map  
NC-NCS-08-048-065  
Map Created on July 15, 2008  
41,543 acres  
Fire Perimeter Approximate

Eric Williams, GISS  
Adam Huffman, GISS (T)  
Jamie Dunbar, GISS (T)  
Florida Blue IMT



- Legend**
- Forced Flow Direction
  - Road Closed / Dead End
  - Division
  - Branch
  - Fire Origin
  - Pump Site
  - Mobile Weather Unit
  - Helispot
  - Hot Spot
  - Other
  - Camp
  - Staging Area
  - Water Source (Type)
  - Drop Point
  - Spot Fire
  - Incident Command Post
  - Helibase
  - Airport or Airstrip
  - Highway 94
  - Bad Roads
  - Road Closed
  - Roads
  - DOT Primary Roads
  - Completed Dozer Line
  - Completed Line
  - Uncontrolled Fire Edge
  - Hydrology
  - 2007
  - Culvert
  - Plug
  - Proposed Plug
  - Proposed Pump
  - WCS
  - Proposed Berm
  - Direction of Canal Flow
  - County Boundaries
  - National Wildlife Refuge Boundary
  - Hydro\_Polys
  - Group 1
  - Group 2
  - Group 3
  - Group 4



76°33'W 76°32'W 76°31'W 76°30'W 76°29'W 76°28'W 76°27'W 76°26'W 76°25'W 76°24'W 76°23'W 76°22'W 76°21'W