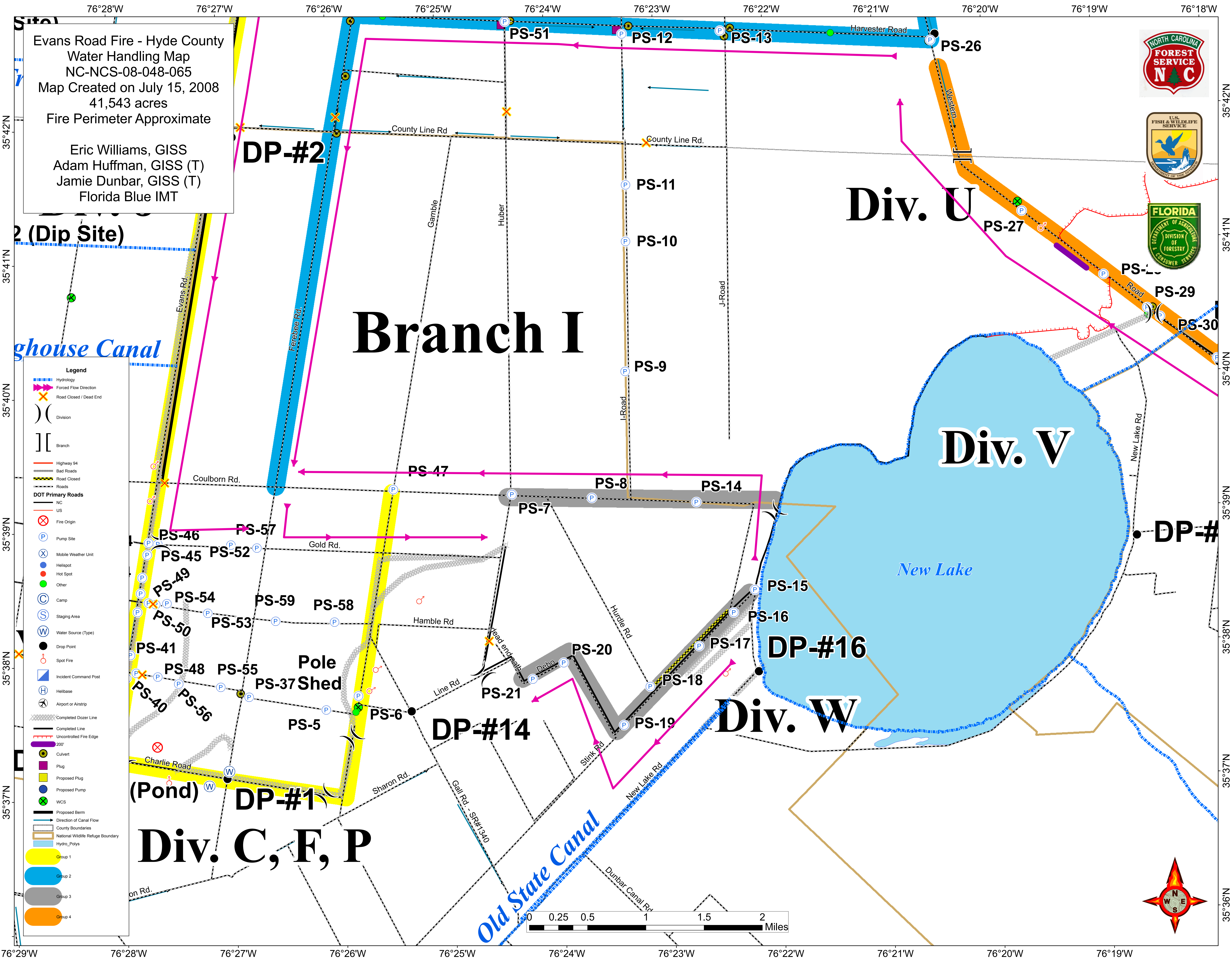


Evans Road Fire - Hyde County
 Water Handling Map
 NC-NCS-08-048-065
 Map Created on July 15, 2008
 41,543 acres
 Fire Perimeter Approximate

Eric Williams, GISS
 Adam Huffman, GISS (T)
 Jamie Dunbar, GISS (T)
 Florida Blue IMT



- Legend**
- Hydrology
 - Forced Flow Direction
 - Road Closed / Dead End
 - Division
 - Branch
 - Highway 94
 - Bad Roads
 - Road Closed
 - Roads
 - DOT Primary Roads
 - NC
 - US
 - Fire Origin
 - Pump Site
 - Mobile Weather Unit
 - Hellspot
 - Hot Spot
 - Other
 - Camp
 - Staging Area
 - Water Source (Type)
 - Drop Point
 - Spot Fire
 - Incident Command Post
 - Helibase
 - Airport or Airstrip
 - Completed Dozer Line
 - Completed Line
 - Uncontrolled Fire Edge
 - 200'
 - Culvert
 - Plug
 - Proposed Plug
 - Proposed Pump
 - WCS
 - Proposed Berm
 - Direction of Canal Flow
 - County Boundaries
 - National Wildlife Refuge Boundary
 - Hydro_Polys
 - Group 1
 - Group 2
 - Group 3
 - Group 4

