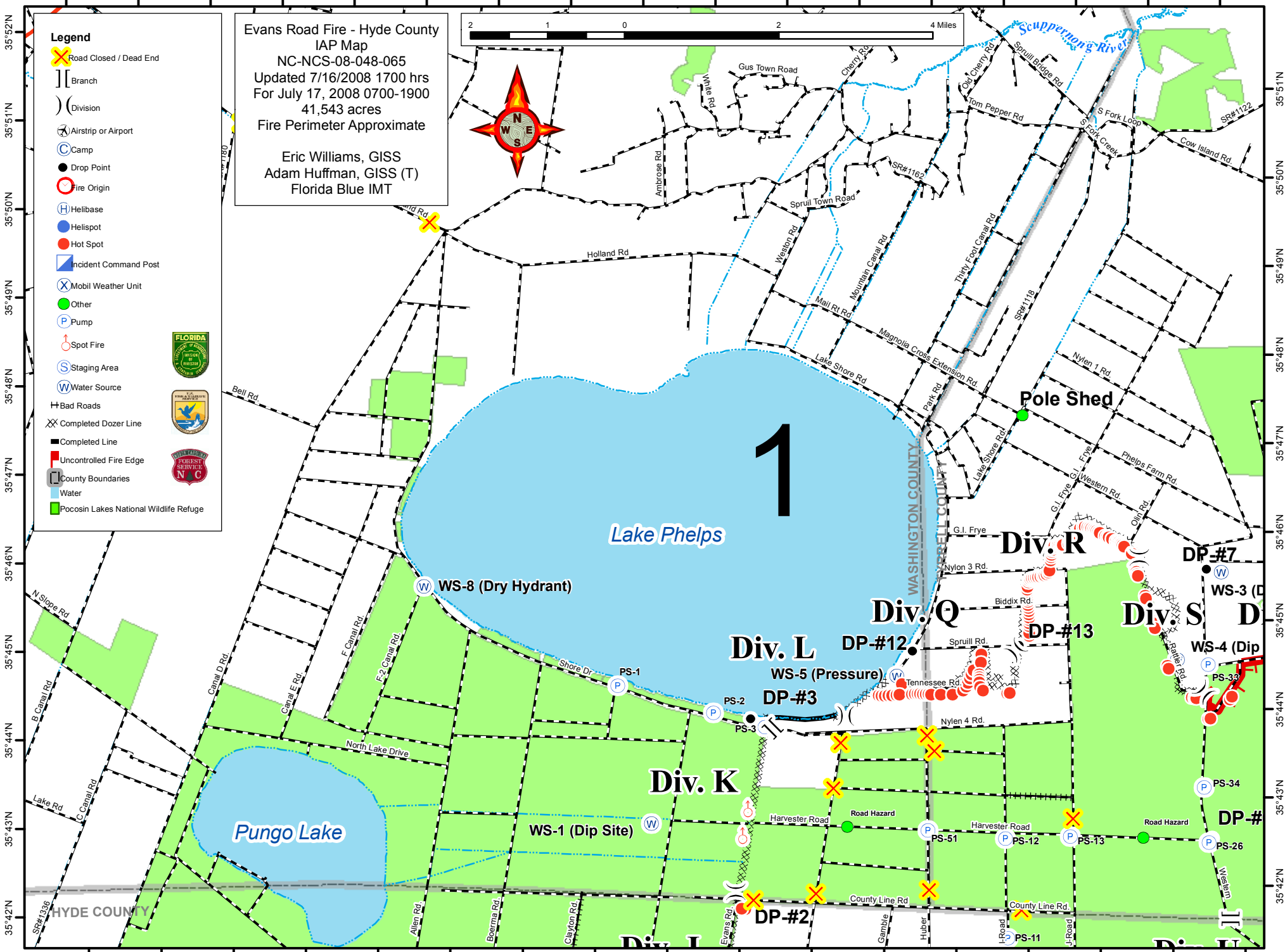


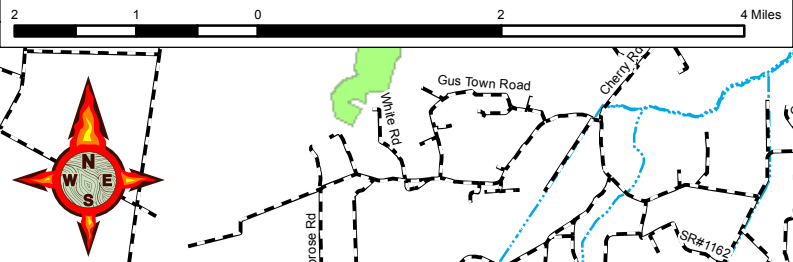
76°36'W 76°35'W 76°34'W 76°33'W 76°32'W 76°31'W 76°30'W 76°29'W 76°28'W 76°27'W 76°26'W 76°25'W 76°24'W 76°23'W 76°22'W 76°21'W 76°20'W



- Legend**
- Road Closed / Dead End
 - Branch
 - Division
 - Airstrip or Airport
 - Camp
 - Drop Point
 - Fire Origin
 - Helibase
 - Helispot
 - Hot Spot
 - Incident Command Post
 - Mobil Weather Unit
 - Other
 - Pump
 - Spot Fire
 - Staging Area
 - Water Source
 - Bad Roads
 - Completed Dozer Line
 - Completed Line
 - Uncontrolled Fire Edge
 - County Boundaries
 - Water
 - Pocosin Lakes National Wildlife Refuge

Evans Road Fire - Hyde County
IAP Map
NC-NCS-08-048-065
Updated 7/16/2008 1700 hrs
For July 17, 2008 0700-1900
41,543 acres
Fire Perimeter Approximate

Eric Williams, GISS
Adam Huffman, GISS (T)
Florida Blue IMT



35°52'N
35°51'N
35°50'N
35°49'N
35°48'N
35°47'N
35°46'N
35°45'N
35°44'N
35°43'N
35°42'N

35°51'N
35°50'N
35°49'N
35°48'N
35°47'N
35°46'N
35°45'N
35°44'N
35°43'N
35°42'N

76°36'W 76°35'W 76°34'W 76°33'W 76°32'W 76°31'W 76°30'W 76°29'W 76°28'W 76°27'W 76°26'W 76°25'W 76°24'W 76°23'W 76°22'W 76°21'W 76°20'W