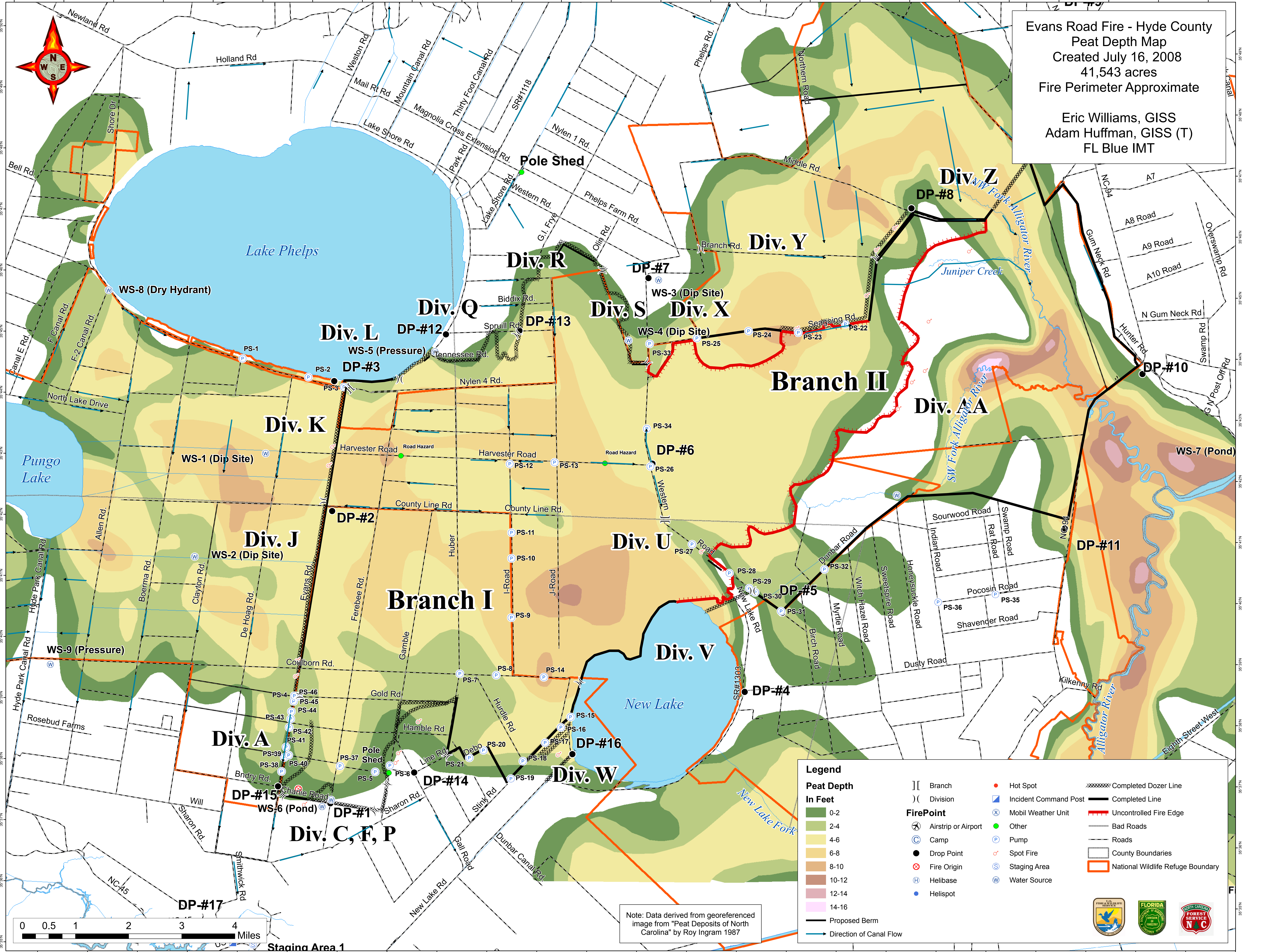


Evans Road Fire - Hyde County  
 Peat Depth Map  
 Created July 16, 2008  
 41,543 acres  
 Fire Perimeter Approximate

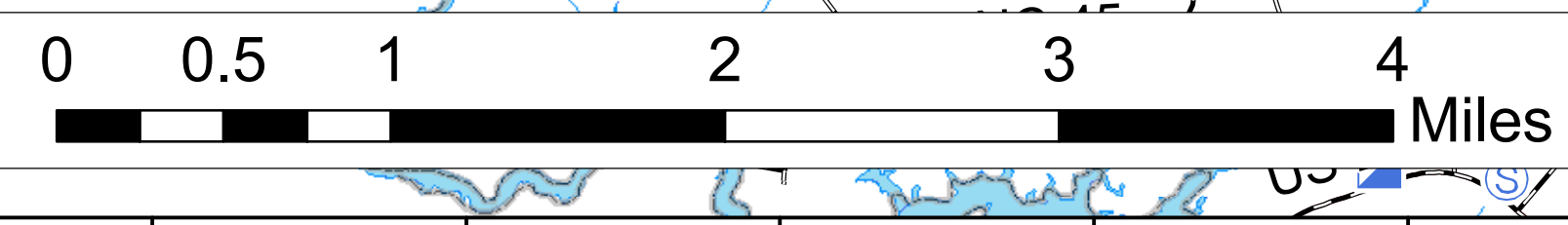
Eric Williams, GISS  
 Adam Huffman, GISS (T)  
 FL Blue IMT



**Legend**

<b>Peat Depth</b>	[ ] Branch	● Hot Spot	----- Completed Dozer Line
<b>In Feet</b>	( ) Division	⊠ Incident Command Post	— Completed Line
0-2	⊠ Airstrip or Airport	⊗ Mobil Weather Unit	--- Uncontrolled Fire Edge
2-4	⊙ Camp	● Other	--- Bad Roads
4-6	● Drop Point	⊙ Spot Fire	— Roads
6-8	⊗ Fire Origin	⊙ Staging Area	— County Boundaries
8-10	⊙ Helibase	⊙ Water Source	— National Wildlife Refuge Boundary
10-12	● Helispot		
12-14			
14-16			
— Proposed Berm			
→ Direction of Canal Flow			

Note: Data derived from georeferenced image from "Peat Deposits of North Carolina" by Roy Ingram 1987



Map coordinates: Longitude 76°33'W to 76°9'W; Latitude 35°50'N to 35°25'N.