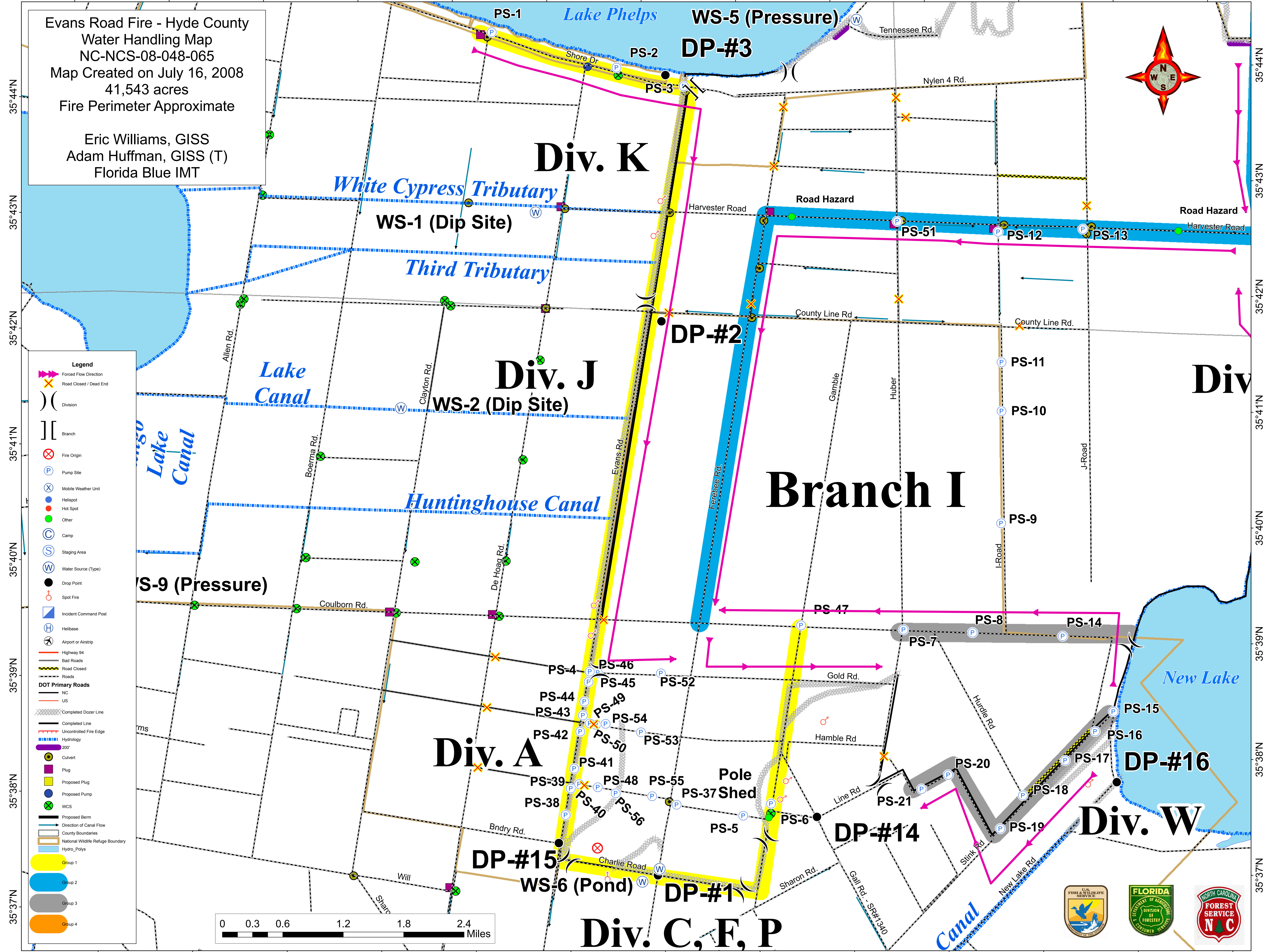


76°33'W 76°32'W 76°31'W 76°30'W 76°29'W 76°28'W 76°27'W 76°26'W 76°25'W 76°24'W 76°23'W 76°22'W 76°21'W

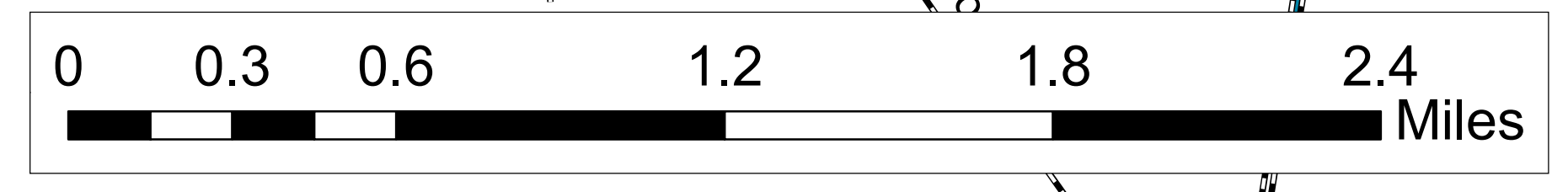
Evans Road Fire - Hyde County
Water Handling Map
NC-NCS-08-048-065
Map Created on July 16, 2008
41,543 acres
Fire Perimeter Approximate

Eric Williams, GISS
Adam Huffman, GISS (T)
Florida Blue IMT



Legend

- Forced Flow Direction
- Road Closed / Dead End
- Division
- Branch
- Fire Origin
- Pump Site
- Mobile Weather Unit
- Hellspot
- Hot Spot
- Other
- Camp
- Staging Area
- Water Source (Type)
- Drop Point
- Spot Fire
- Incident Command Post
- Helibase
- Airport or Airstrip
- Highway 94
- Bad Roads
- Road Closed
- Roads
- DOT Primary Roads
- NC
- US
- Completed Dozer Line
- Completed Line
- Uncontrolled Fire Edge
- Hydrology
- 200'
- Culvert
- Plug
- Proposed Plug
- Proposed Pump
- WCS
- Proposed Berm
- Direction of Canal Flow
- County Boundaries
- National Wildlife Refuge Boundary
- Hydro_Plays
- Group 1
- Group 2
- Group 3
- Group 4



76°33'W 76°32'W 76°31'W 76°30'W 76°29'W 76°28'W 76°27'W 76°26'W 76°25'W 76°24'W 76°23'W 76°22'W 76°21'W

35°44'N
35°43'N
35°42'N
35°41'N
35°40'N
35°39'N
35°38'N
35°37'N

35°44'N
35°43'N
35°42'N
35°41'N
35°40'N
35°39'N
35°38'N
35°37'N