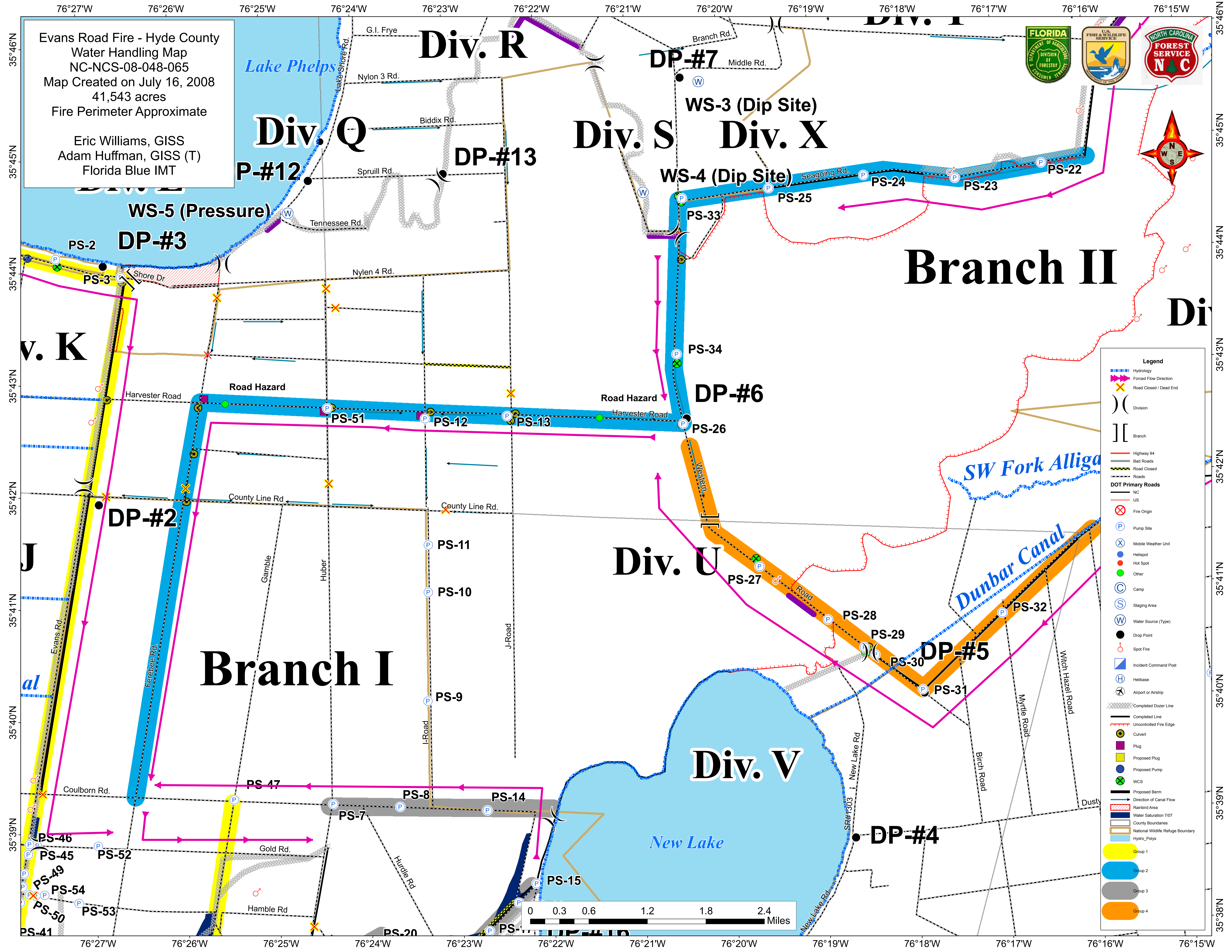
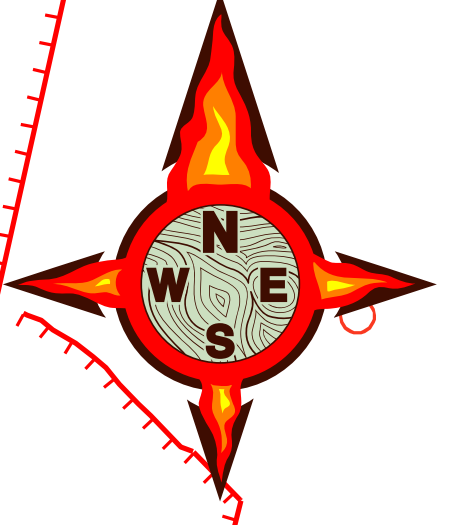


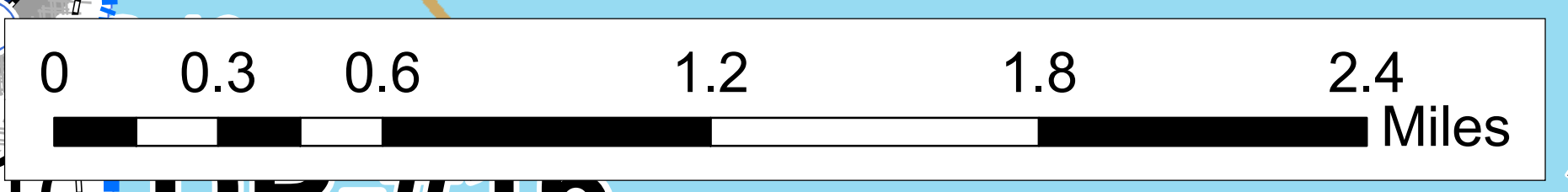
Evans Road Fire - Hyde County
 Water Handling Map
 NC-NCS-08-048-065
 Map Created on July 16, 2008
 41,543 acres
 Fire Perimeter Approximate

Eric Williams, GISS
 Adam Huffman, GISS (T)
 Florida Blue IMT



Branch II

Branch I



Legend	
	Hydrology
	Forced Flow Direction
	Road Closed / Dead End
	Division
	Branch
	Highway 94
	Bad Roads
	Road Closed
	Roads
	DOT Primary Roads
	Fire Origin
	Pump Site
	Mobile Weather Unit
	Hot Spot
	Other
	Camp
	Staging Area
	Water Source (Type)
	Drop Point
	Spot Fire
	Incident Command Post
	Helibase
	Airport or Airstrip
	Completed Dozer Line
	Completed Line
	Uncontrolled Fire Edge
	Culvert
	Plug
	Proposed Plug
	Proposed Pump
	WCS
	Proposed Berm
	Direction of Canal Flow
	Rainbird Area
	Water Saturation 7/07
	County boundaries
	National Wildlife Refuge Boundary
	Hydro_Polys
	Group 1
	Group 2
	Group 3
	Group 4