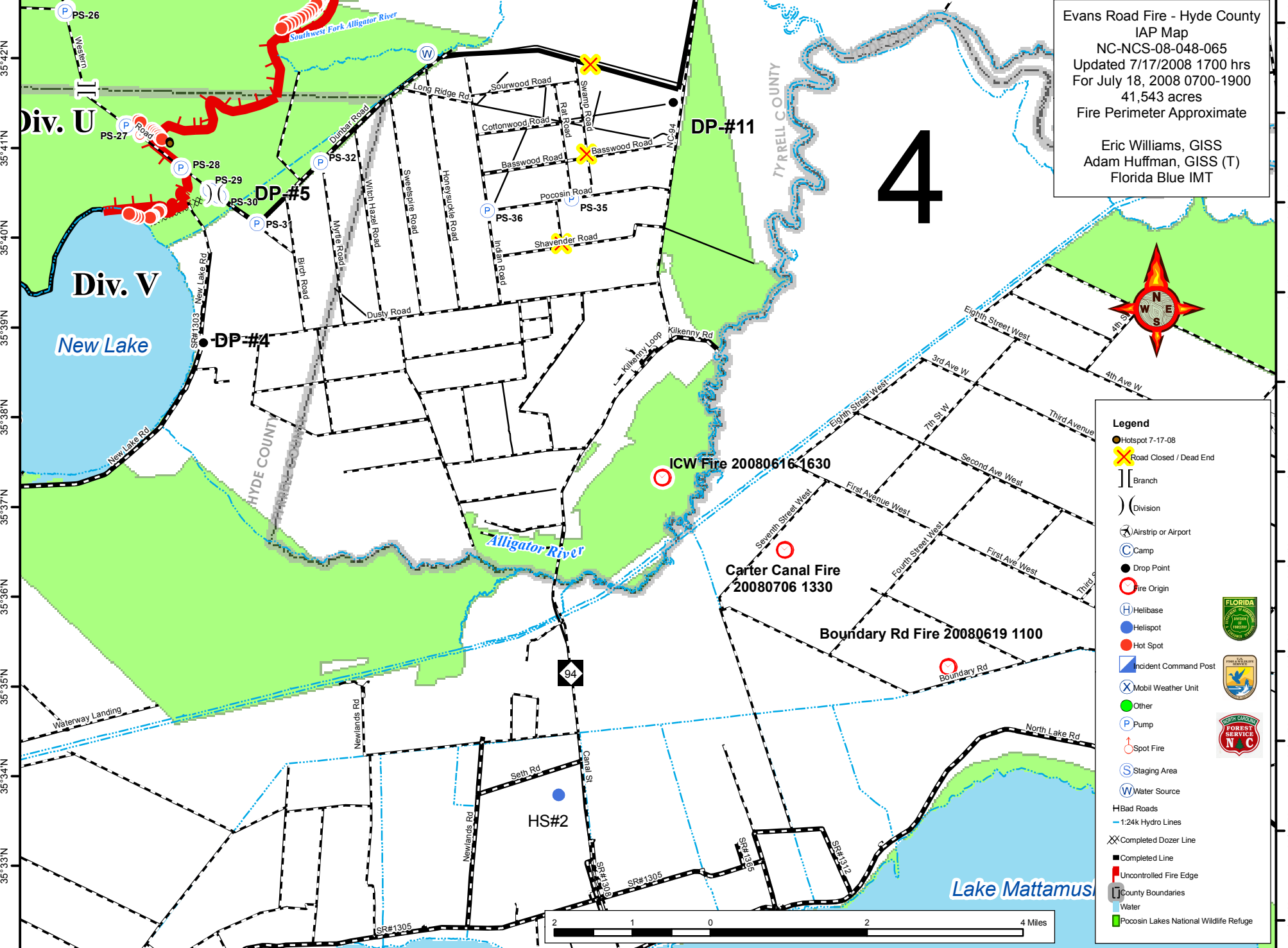


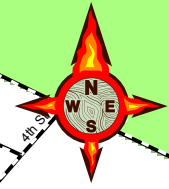
76°21'W 76°20'W 76°19'W 76°18'W 76°17'W 76°16'W 76°15'W 76°14'W 76°13'W 76°12'W 76°11'W 76°10'W 76°9'W 76°8'W 76°7'W 76°6'W 76°5'W 76°4'W



Evans Road Fire - Hyde County
IAP Map
NC-NCS-08-048-065
Updated 7/17/2008 1700 hrs
For July 18, 2008 0700-1900
41,543 acres
Fire Perimeter Approximate

Eric Williams, GISS
Adam Huffman, GISS (T)
Florida Blue IMT

4



- Legend**
- Hotspot 7-17-08
 - ✕ Road Closed / Dead End
 - || Branch
 -) Division
 - ✈ Airstrip or Airport
 - C Camp
 - Drop Point
 - Fire Origin
 - H Helibase
 - Helispot
 - Hot Spot
 - ▢ Incident Command Post
 - X Mobil Weather Unit
 - P Pump
 - ↑ Spot Fire
 - S Staging Area
 - W Water Source
 - HBad Roads
 - 1:24k Hydro Lines
 - XX Completed Dozer Line
 - █ Completed Line
 - Uncontrolled Fire Edge
 - County Boundaries
 - Water
 - Pocosin Lakes National Wildlife Refuge



76°21'W 76°20'W 76°19'W 76°18'W 76°17'W 76°16'W 76°15'W 76°14'W 76°13'W 76°12'W 76°11'W 76°10'W 76°9'W 76°8'W 76°7'W 76°6'W 76°5'W 76°4'W

35°42'N
35°41'N
35°40'N
35°39'N
35°38'N
35°37'N
35°36'N
35°35'N
35°34'N
35°33'N

35°42'N
35°41'N
35°40'N
35°39'N
35°38'N
35°37'N
35°36'N
35°35'N
35°34'N
35°33'N