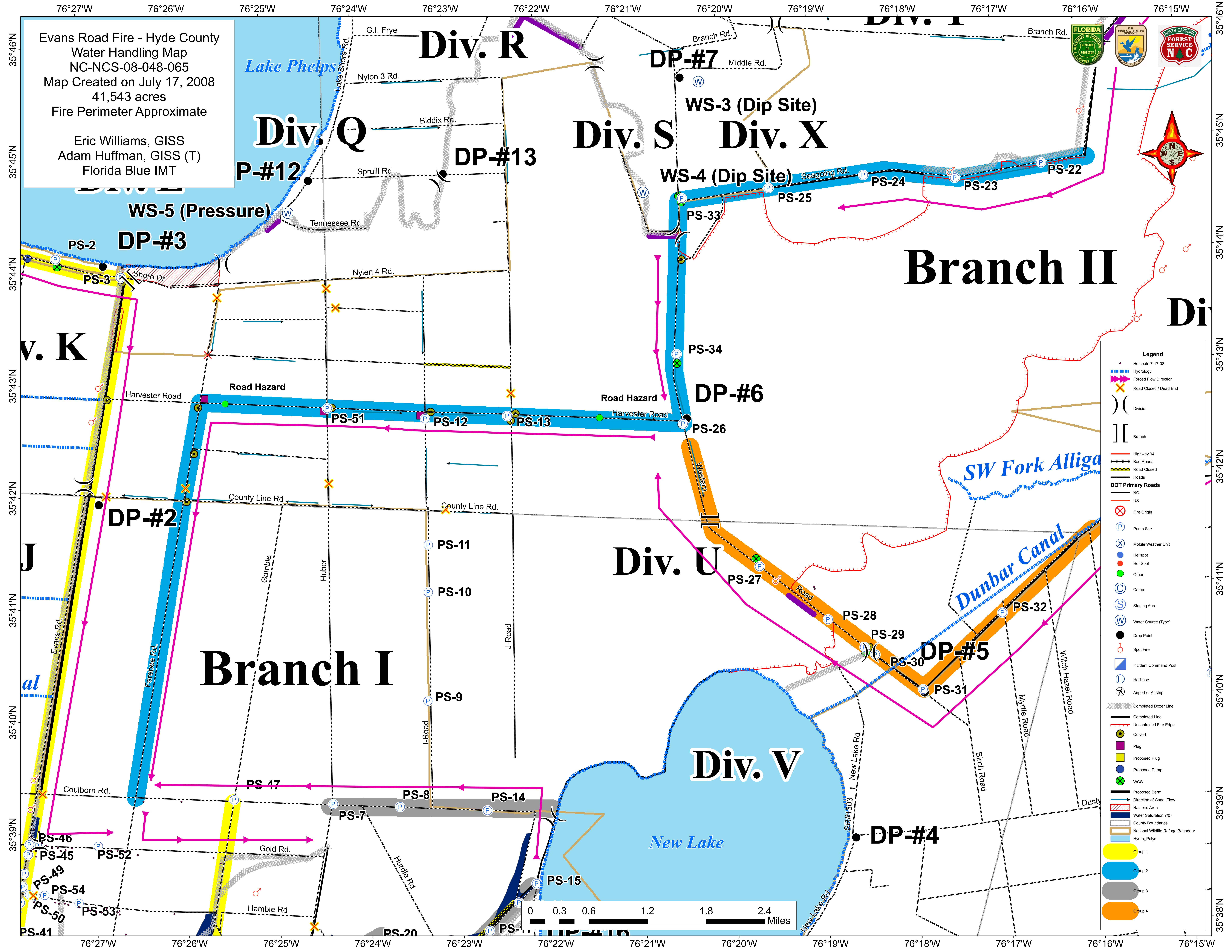
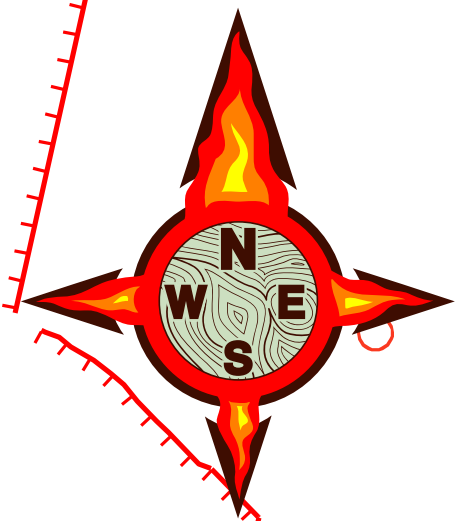


Evans Road Fire - Hyde County  
 Water Handling Map  
 NC-NCS-08-048-065  
 Map Created on July 17, 2008  
 41,543 acres  
 Fire Perimeter Approximate

Eric Williams, GISS  
 Adam Huffman, GISS (T)  
 Florida Blue IMT



**Legend**

- Hotspots 7-17-08
- Hydrology
- Forced Flow Direction
- Road Closed / Dead End
- Division
- Branch
- Highway 94
- Bad Roads
- Road Closed
- Roads
- DOT Primary Roads
  - NC
  - US
- Fire Origin
- Pump Site
- Mobile Weather Unit
- Hot Spot
- Hot Spot
- Other
- Camp
- Staging Area
- Water Source (Type)
- Drop Point
- Spot Fire
- Incident Command Post
- Helibase
- Airport or Airstrip
- Completed Dozer Line
- Completed Line
- Uncontrolled Fire Edge
- Culvert
- Plug
- Proposed Plug
- Proposed Pump
- WCS
- Proposed Berm
- Direction of Canal Flow
- Rainbird Area
- Water Saturation 7/07
- County boundaries
- National Wildlife Refuge Boundary
- Hydro\_Polys
- Group 1
- Group 2
- Group 3
- Group 4

