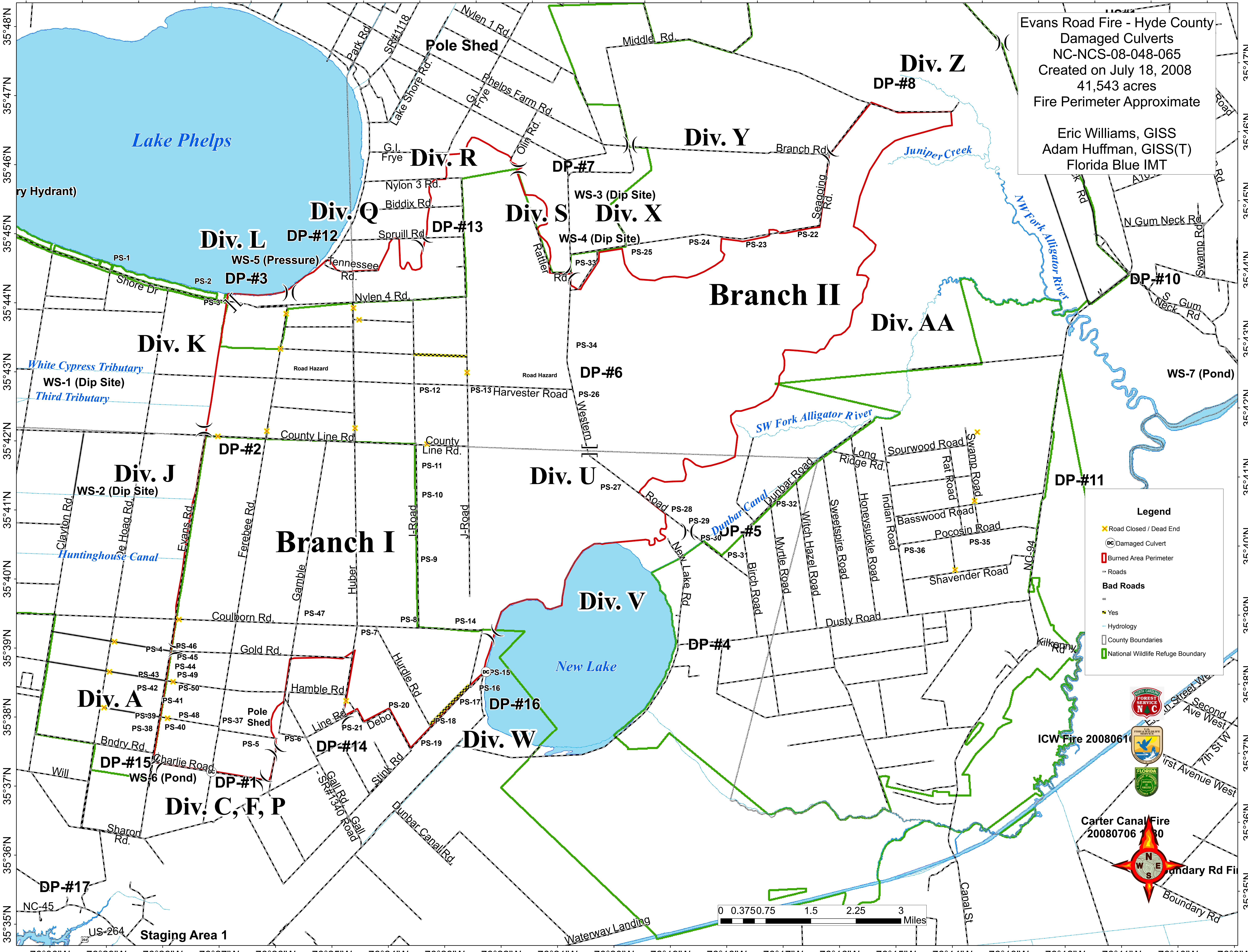


76°30'W 76°29'W 76°28'W 76°27'W 76°26'W 76°25'W 76°24'W 76°23'W 76°22'W 76°21'W 76°20'W 76°19'W 76°18'W 76°17'W 76°16'W 76°15'W 76°14'W 76°13'W 76°12'W 76°11'W 76°10'W 76°9'W



Evans Road Fire - Hyde County - Damaged Culverts
NC-NCS-08-048-065
Created on July 18, 2008
41,543 acres
Fire Perimeter Approximate

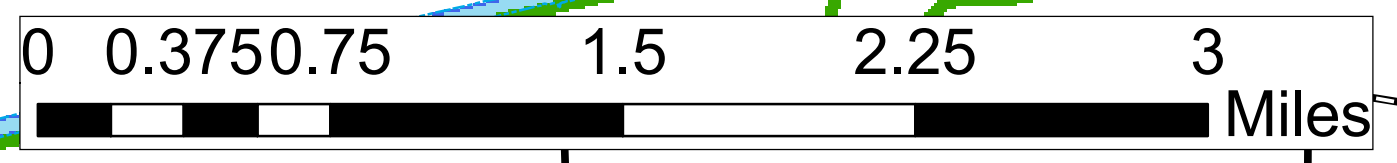
Eric Williams, GISS
Adam Huffman, GISS(T)
Florida Blue IMT

Legend

- ✖ Road Closed / Dead End
- ⊙ Damaged Culvert
- ▭ Burned Area Perimeter
- Roads
- Bad Roads**
- ✖ Yes
- Hydrology
- ▭ County Boundaries
- ▭ National Wildlife Refuge Boundary



ICW Fire 20080611
Carter Canal Fire 20080706
Boundary Rd Fire



76°30'W 76°29'W 76°28'W 76°27'W 76°26'W 76°25'W 76°24'W 76°23'W 76°22'W 76°21'W 76°20'W 76°19'W 76°18'W 76°17'W 76°16'W 76°15'W 76°14'W 76°13'W 76°12'W 76°11'W 76°10'W 76°9'W