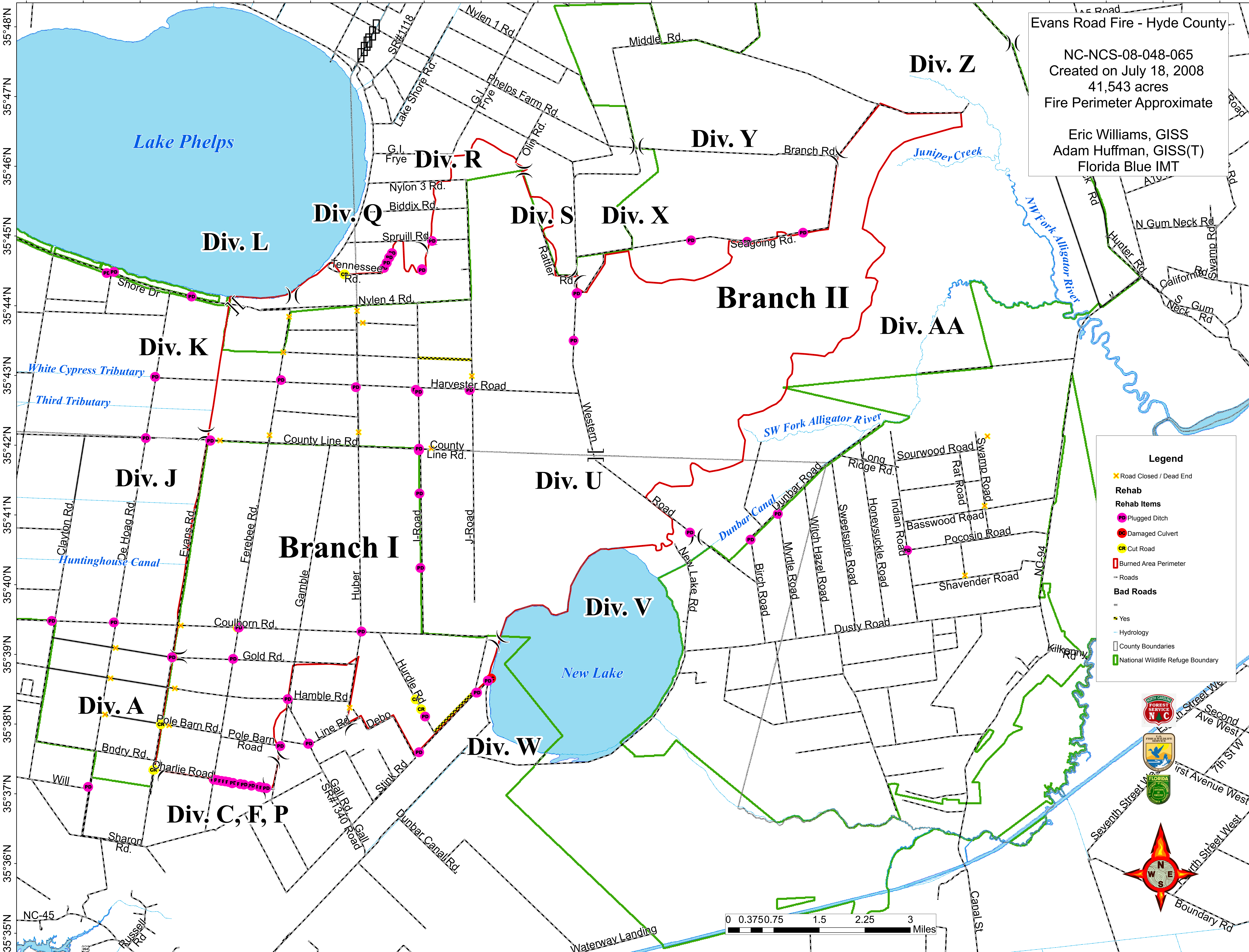


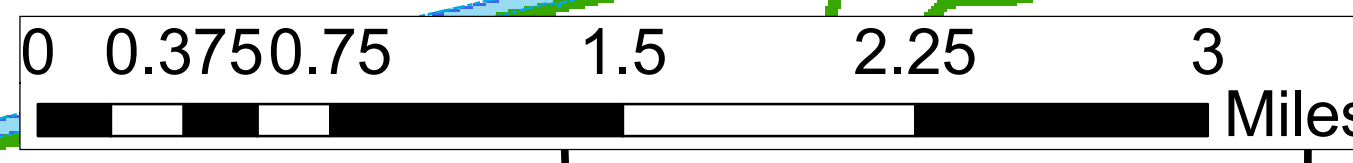
76°30'W 76°29'W 76°28'W 76°27'W 76°26'W 76°25'W 76°24'W 76°23'W 76°22'W 76°21'W 76°20'W 76°19'W 76°18'W 76°17'W 76°16'W 76°15'W 76°14'W 76°13'W 76°12'W 76°11'W 76°10'W 76°9'W



Evans Road Fire - Hyde County  
NC-NCS-08-048-065  
Created on July 18, 2008  
41,543 acres  
Fire Perimeter Approximate  
Eric Williams, GISS  
Adam Huffman, GISS(T)  
Florida Blue IMT

**Legend**

- ✕ Road Closed / Dead End
- Rehab**
- Rehab Items**
- Plugged Ditch
- Damaged Culvert
- Cut Road
- ▭ Burned Area Perimeter
- Roads
- Bad Roads**
- Yes
- Hydrology
- ▭ County Boundaries
- ▭ National Wildlife Refuge Boundary



76°30'W 76°29'W 76°28'W 76°27'W 76°26'W 76°25'W 76°24'W 76°23'W 76°22'W 76°21'W 76°20'W 76°19'W 76°18'W 76°17'W 76°16'W 76°15'W 76°14'W 76°13'W 76°12'W 76°11'W 76°10'W 76°9'W

35°48'N 35°47'N 35°46'N 35°45'N 35°44'N 35°43'N 35°42'N 35°41'N 35°40'N 35°39'N 35°38'N 35°37'N 35°36'N 35°35'N

35°48'N 35°47'N 35°46'N 35°45'N 35°44'N 35°43'N 35°42'N 35°41'N 35°40'N 35°39'N 35°38'N 35°37'N 35°36'N 35°35'N