

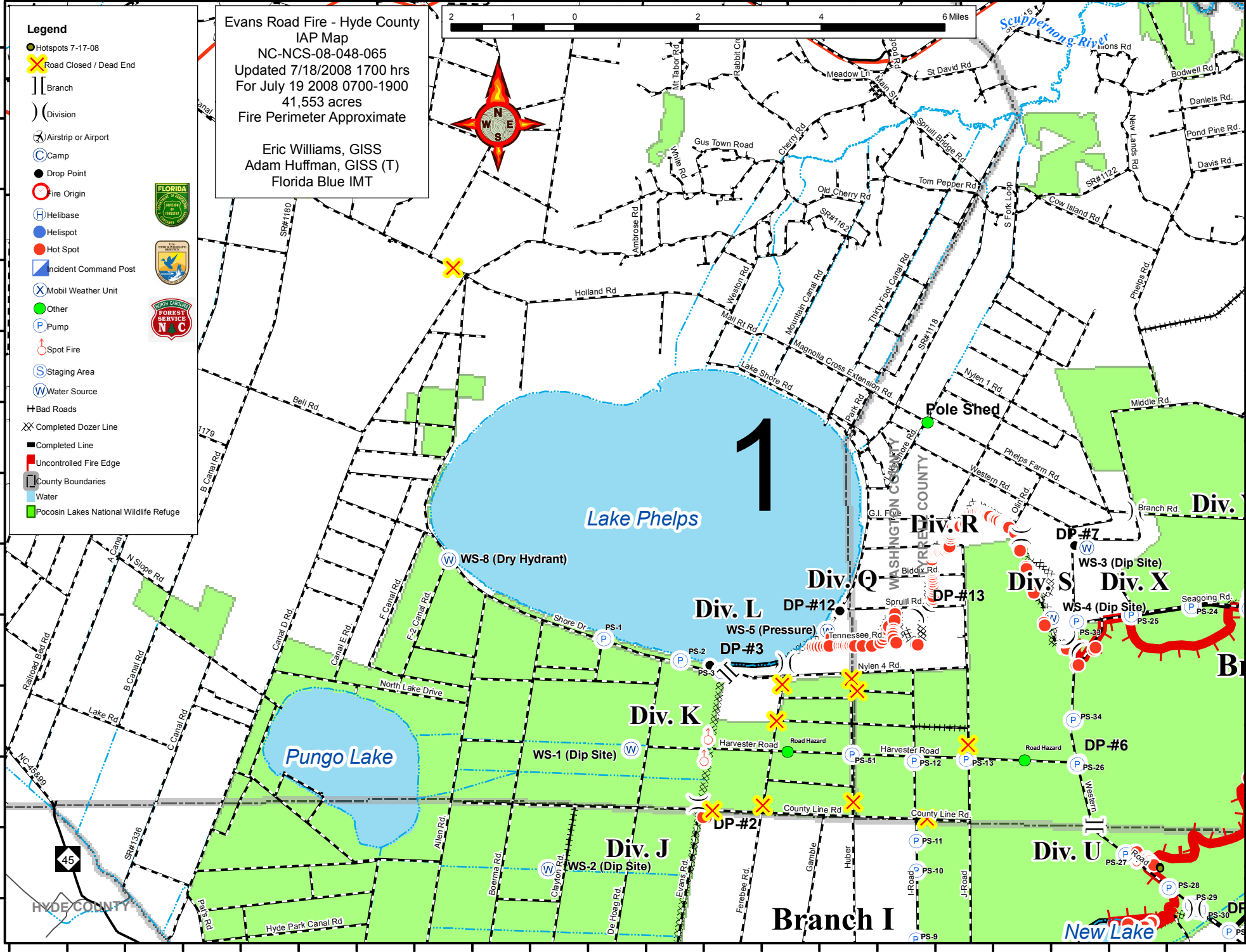
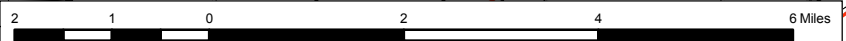
76°38'W 76°37'W 76°36'W 76°35'W 76°34'W 76°33'W 76°32'W 76°31'W 76°30'W 76°29'W 76°28'W 76°27'W 76°26'W 76°25'W 76°24'W 76°23'W 76°22'W 76°21'W 76°20'W 76°19'W 76°18'W

35°53'N  
35°52'N  
35°51'N  
35°50'N  
35°49'N  
35°48'N  
35°47'N  
35°46'N  
35°45'N  
35°44'N  
35°43'N  
35°42'N  
35°41'N  
35°40'N

- Legend**
- Hotspots 7-17-08
  - ✕ Road Closed / Dead End
  - ] Branch
  - ) Division
  - ✈ Airstrip or Airport
  - ⊙ Camp
  - Drop Point
  - ⊙ Fire Origin
  - ⊙ Helibase
  - Helispot
  - Hot Spot
  - ▢ Incident Command Post
  - ⊗ Mobil Weather Unit
  - Other
  - ⊙ Pump
  - ⊙ Spot Fire
  - ⊙ Staging Area
  - ⊙ Water Source
  - ⊕ Bad Roads
  - ⊗ Completed Dozer Line
  - ▬ Completed Line
  - ▬ Uncontrolled Fire Edge
  - ▬ County Boundaries
  - ▬ Water
  - ▬ Pocosin Lakes National Wildlife Refuge

Evans Road Fire - Hyde County  
IAP Map  
NC-NCS-08-048-065  
Updated 7/18/2008 1700 hrs  
For July 19 2008 0700-1900  
41,553 acres  
Fire Perimeter Approximate

Eric Williams, GISS  
Adam Huffman, GISS (T)  
Florida Blue IMT



HYDE COUNTY

Branch I

New Lake