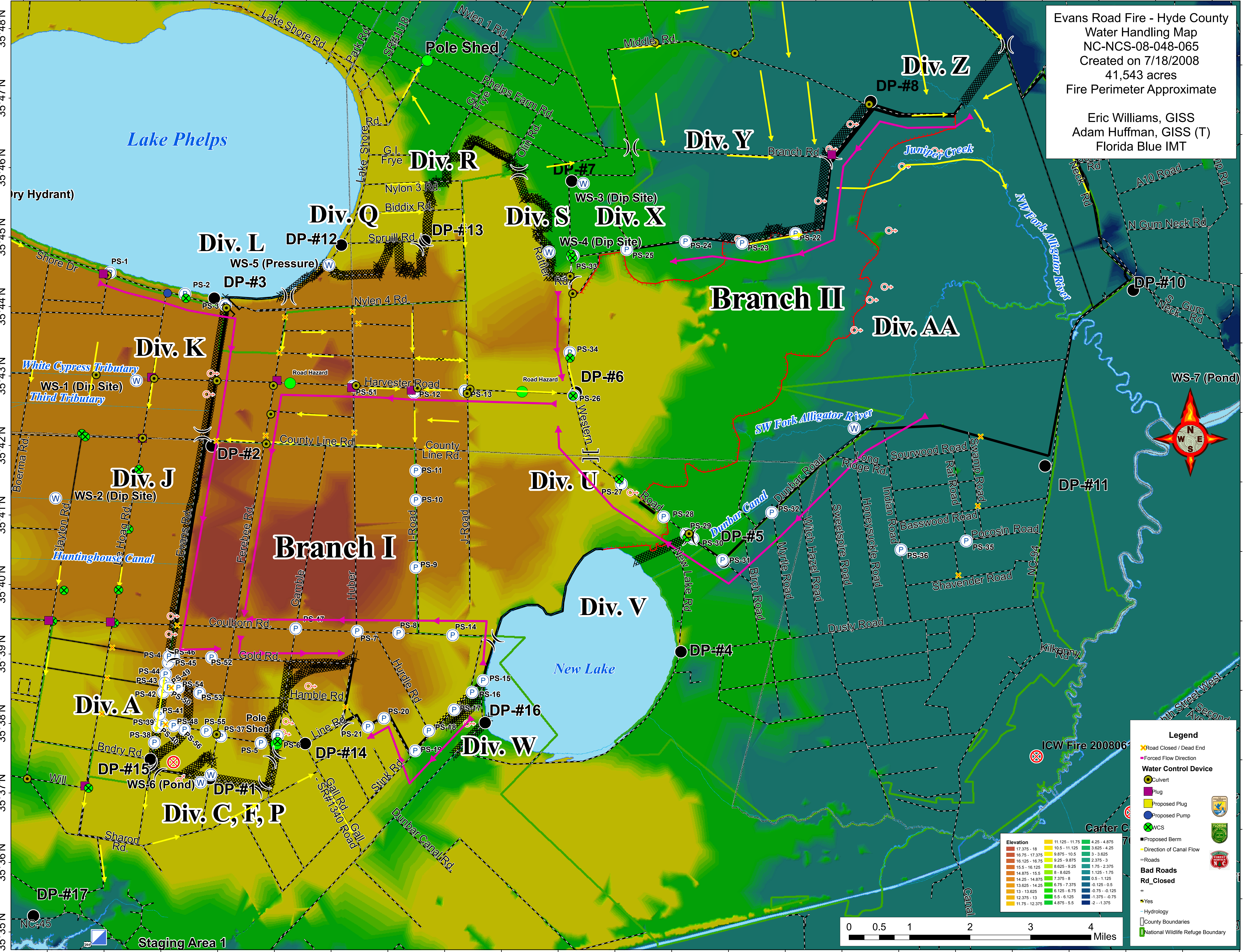


76°30'W 76°29'W 76°28'W 76°27'W 76°26'W 76°25'W 76°24'W 76°23'W 76°22'W 76°21'W 76°20'W 76°19'W 76°18'W 76°17'W 76°16'W 76°15'W 76°14'W 76°13'W 76°12'W 76°11'W 76°10'W 76°9'W



Evans Road Fire - Hyde County  
Water Handling Map  
NC-NCS-08-048-065  
Created on 7/18/2008  
41,543 acres  
Fire Perimeter Approximate  
  
Eric Williams, GISS  
Adam Huffman, GISS (T)  
Florida Blue IMT

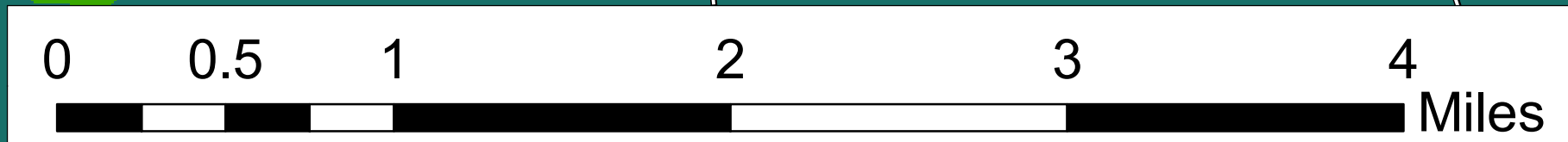


**Legend**

- Road Closed / Dead End
- Forced Flow Direction
- Water Control Device**
  - Culvert
  - Plug
  - Proposed Plug
  - Proposed Pump
  - WCS
  - Proposed Berm
  - Direction of Canal Flow
- Bad Roads**
- Rd\_Closed**
  - Yes
- Hydrology
- County Boundaries
- National Wildlife Refuge Boundary

**Elevation**

17.375 - 18	10.5 - 11.125	4.25 - 4.875
16.75 - 17.375	9.875 - 10.5	3 - 3.625
16.125 - 16.75	9.25 - 9.875	2.375 - 3
15.5 - 16.125	8.625 - 9.25	1.75 - 2.375
14.875 - 15.5	8 - 8.625	1.125 - 1.75
14.25 - 14.875	7.375 - 8	0.5 - 1.125
13.625 - 14.25	6.75 - 7.375	-0.125 - 0.5
13 - 13.625	6.125 - 6.75	-0.75 - -0.125
12.375 - 13	5.5 - 6.125	-1.375 - -0.75
11.75 - 12.375	4.875 - 5.5	-2 - -1.375



76°30'W 76°29'W 76°28'W 76°27'W 76°26'W 76°25'W 76°24'W 76°23'W 76°22'W 76°21'W 76°20'W 76°19'W 76°18'W 76°17'W 76°16'W 76°15'W 76°14'W 76°13'W 76°12'W 76°11'W 76°10'W 76°9'W