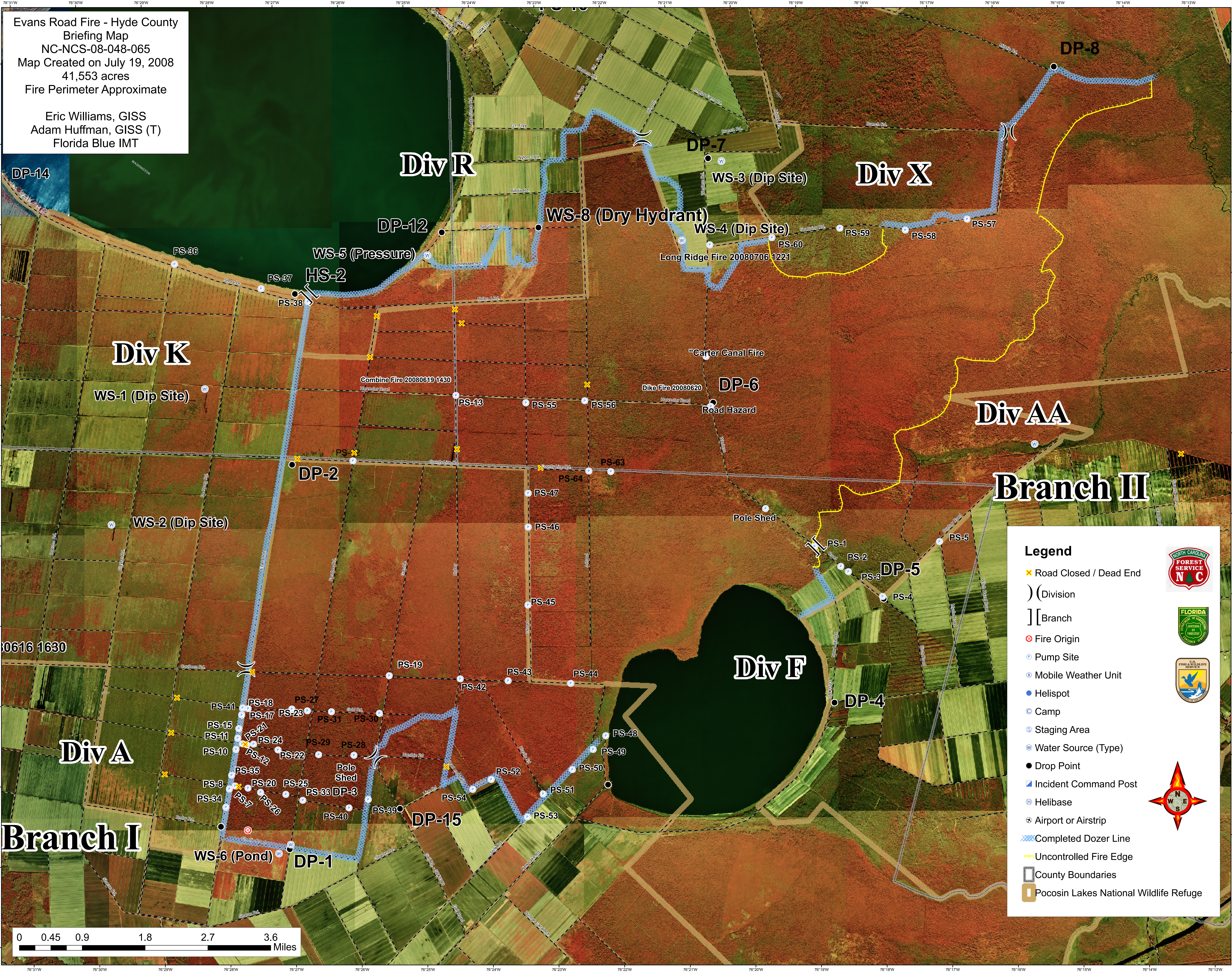


Evans Road Fire - Hyde County  
 Briefing Map  
 NC-NCS-08-048-065  
 Map Created on July 19, 2008  
 41,553 acres  
 Fire Perimeter Approximate

Eric Williams, GISS  
 Adam Huffman, GISS (T)  
 Florida Blue IMT



**Legend**

- ✘ Road Closed / Dead End
- ) (Division
- ] [ Branch
- ⊗ Fire Origin
- ⊙ Pump Site
- ⊗ Mobile Weather Unit
- Helispot
- ⊙ Camp
- ⊙ Staging Area
- ⊙ Water Source (Type)
- Drop Point
- ⊙ Incident Command Post
- ⊙ Helibase
- ⊙ Airport or Airstrip
- ▬ Completed Dozer Line
- ▬ Uncontrolled Fire Edge
- ▭ County Boundaries
- ▭ Pocosin Lakes National Wildlife Refuge

