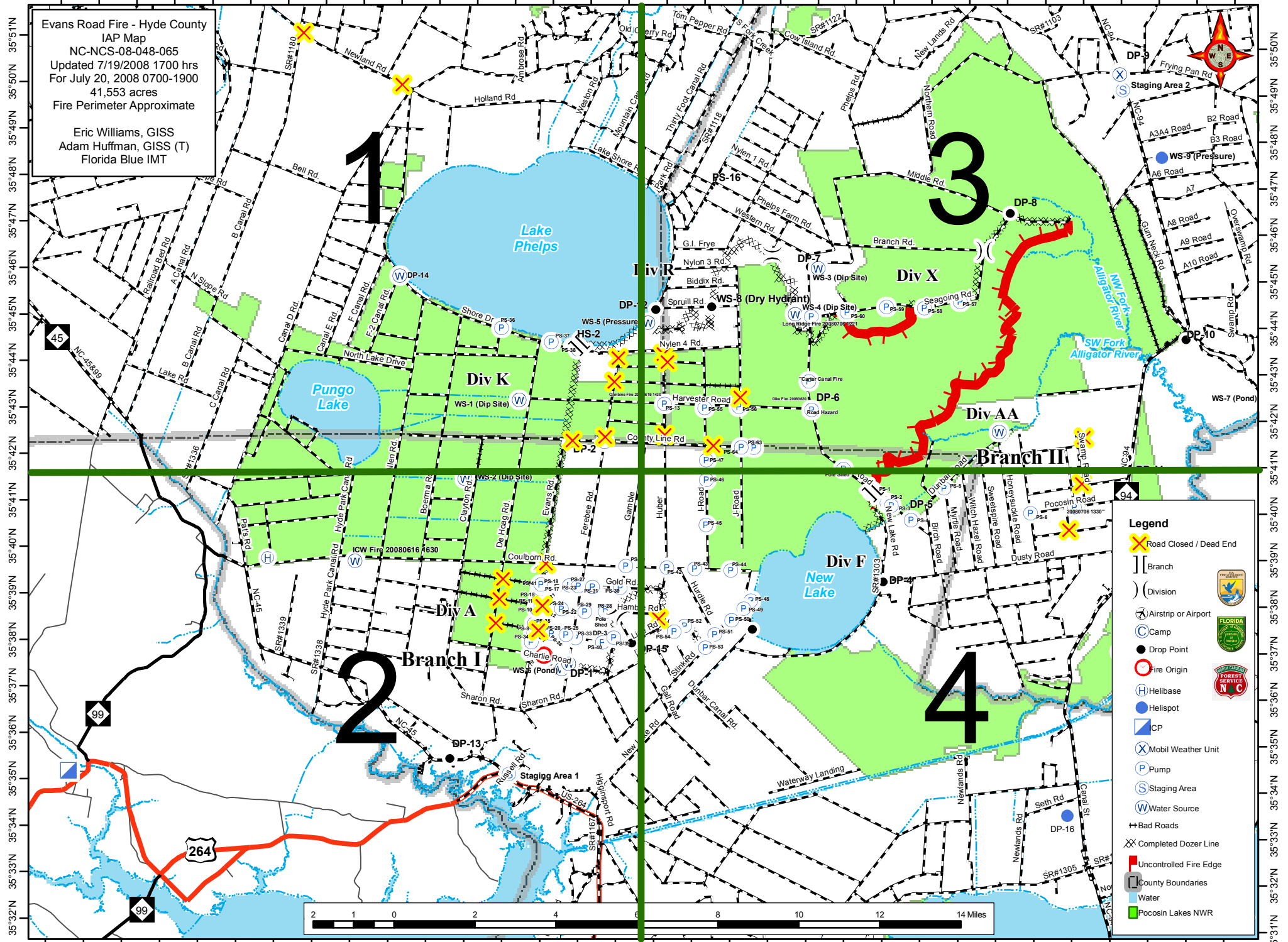


76°39'W 76°37'W 76°35'W 76°33'W 76°31'W 76°29'W 76°27'W 76°25'W 76°23'W 76°21'W 76°19'W 76°17'W 76°15'W 76°13'W 76°11'W 76°9'W

Evans Road Fire - Hyde County  
IAP Map  
NC-NCS-08-048-065  
Updated 7/19/2008 1700 hrs  
For July 20, 2008 0700-1900  
41,553 acres  
Fire Perimeter Approximate  
  
Eric Williams, GISS  
Adam Huffman, GISS (T)  
Florida Blue IMT



35°51'N 35°49'N 35°48'N 35°47'N 35°46'N 35°45'N 35°44'N 35°43'N 35°42'N 35°41'N 35°40'N 35°39'N 35°38'N 35°37'N 35°36'N 35°35'N 35°34'N 35°33'N 35°32'N 35°31'N

35°50'N 35°49'N 35°48'N 35°47'N 35°46'N 35°45'N 35°44'N 35°43'N 35°42'N 35°41'N 35°40'N 35°39'N 35°38'N 35°37'N 35°36'N 35°35'N 35°34'N 35°33'N 35°32'N 35°31'N



**Legend**

- ✕ Road Closed / Dead End
- | Branch
- ) Division
- ✈ Airstrip or Airport
- C Camp
- Drop Point
- 🔥 Fire Origin
- H Helibase
- Helispot
- CP
- ⊗ Mobil Weather Unit
- P Pump
- S Staging Area
- W Water Source
- ⚡ Bad Roads
- XX Completed Dozer Line
- 🔴 Uncontrolled Fire Edge
- ▭ County Boundaries
- 💧 Water
- 🌿 Pocosin Lakes NWR