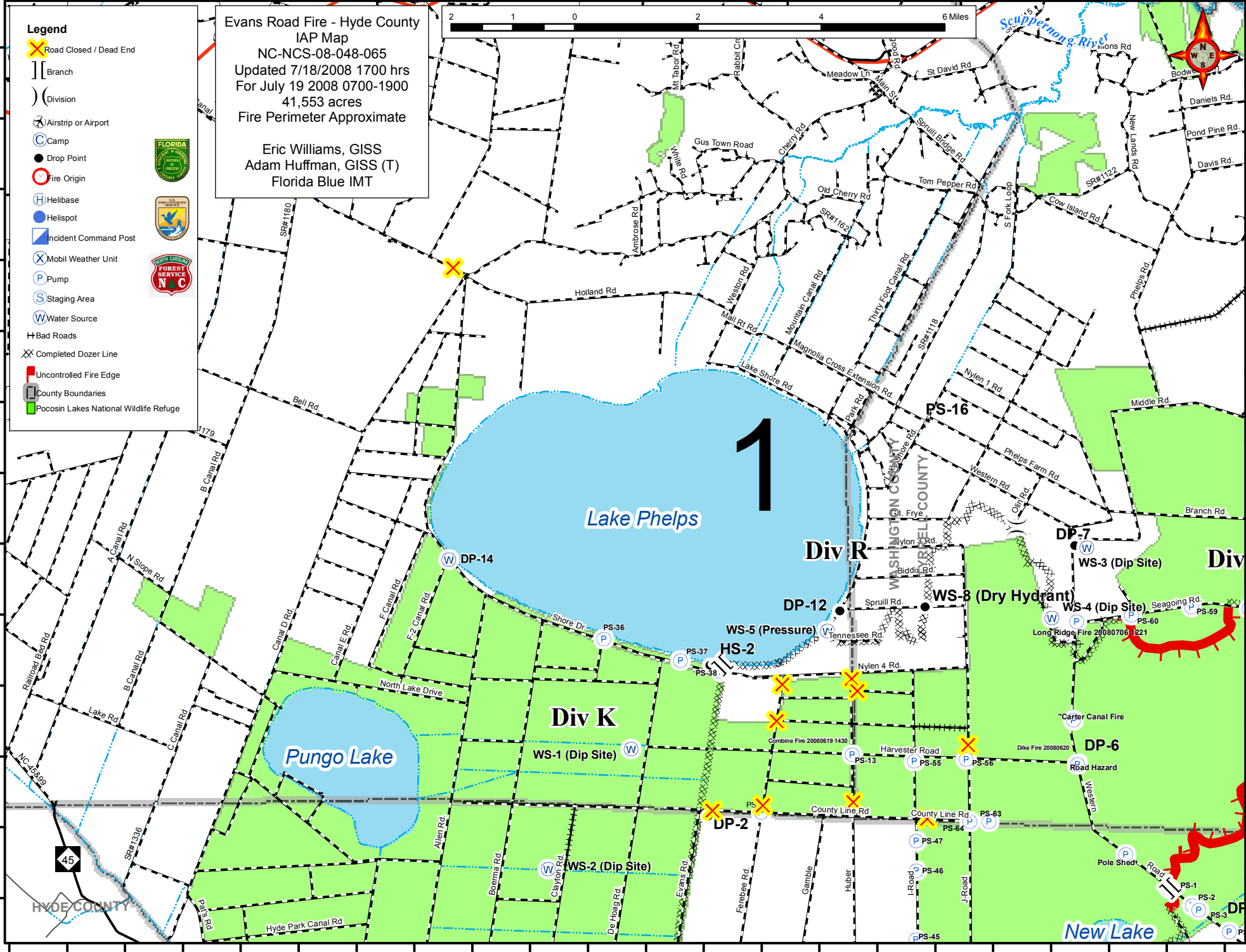


76°38'W 76°37'W 76°36'W 76°35'W 76°34'W 76°33'W 76°32'W 76°31'W 76°30'W 76°29'W 76°28'W 76°27'W 76°26'W 76°25'W 76°24'W 76°23'W 76°22'W 76°21'W 76°20'W 76°19'W 76°18'W

- Legend**
- Road Closed / Dead End
 - Branch
 - Division
 - Airstrip or Airport
 - Camp
 - Drop Point
 - Fire Origin
 - Helibase
 - Helispot
 - Incident Command Post
 - Mobil Weather Unit
 - Pump
 - Staging Area
 - Water Source
 - Bad Roads
 - Completed Dozer Line
 - Uncontrolled Fire Edge
 - County Boundaries
 - Pocosin Lakes National Wildlife Refuge

Evans Road Fire - Hyde County
 IAP Map
 NC-NCS-08-048-065
 Updated 7/18/2008 1700 hrs
 For July 19 2008 0700-1900
 41,553 acres
 Fire Perimeter Approximate

Eric Williams, GISS
 Adam Huffman, GISS (T)
 Florida Blue IMT



76°39'W 76°38'W 76°37'W 76°36'W 76°35'W 76°34'W 76°33'W 76°32'W 76°31'W 76°30'W 76°29'W 76°28'W 76°27'W 76°26'W 76°25'W 76°24'W 76°23'W 76°22'W 76°21'W 76°20'W 76°19'W 76°18'W

35°53'N 35°52'N 35°51'N 35°50'N 35°49'N 35°48'N 35°47'N 35°46'N 35°45'N 35°44'N 35°43'N 35°42'N 35°41'N 35°40'N