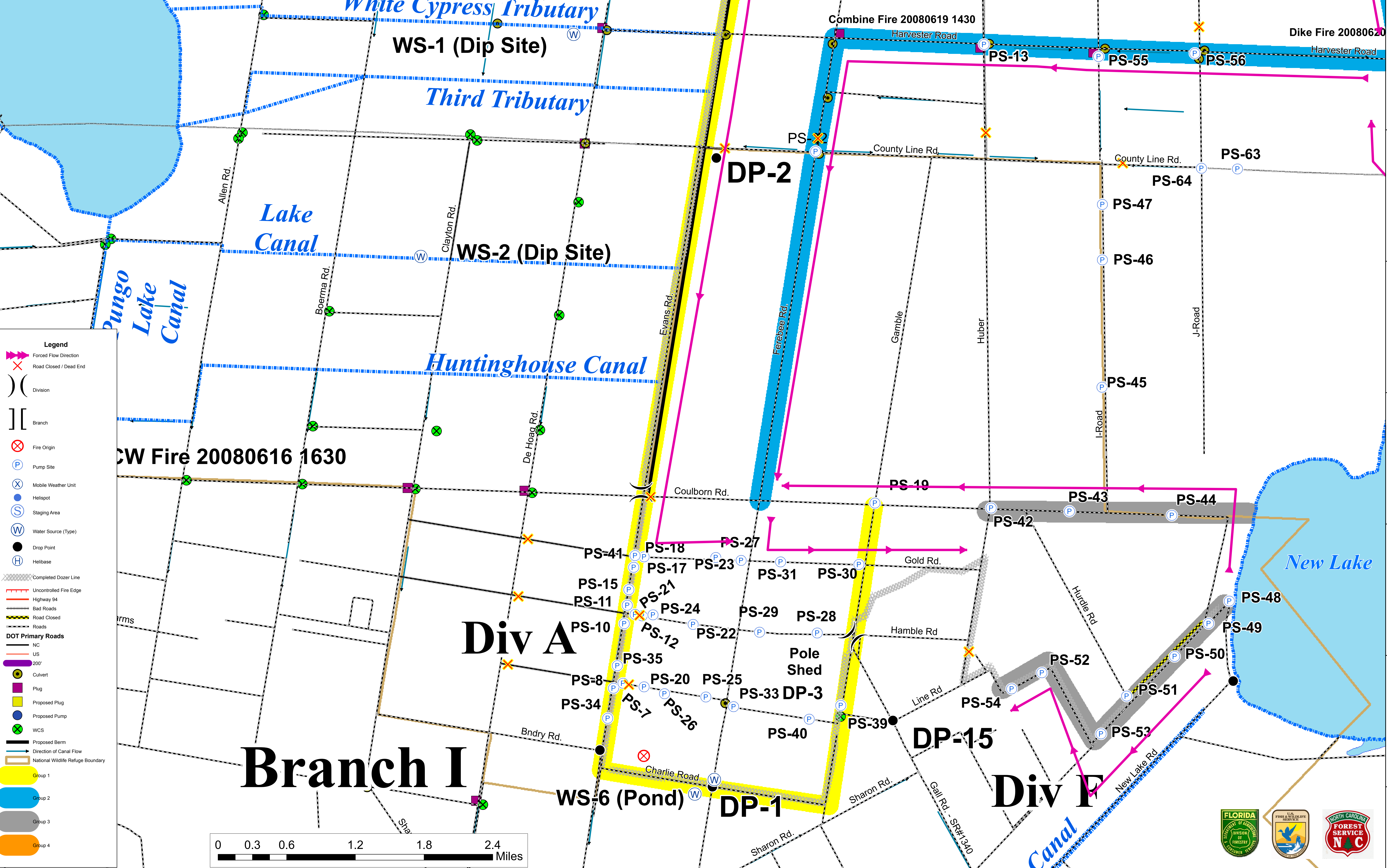


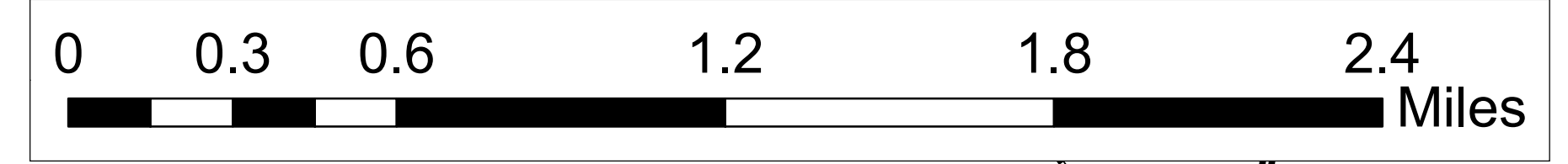
76°33'W 76°32'W 76°31'W 76°30'W 76°29'W 76°28'W 76°27'W 76°26'W 76°25'W 76°24'W 76°23'W 76°22'W 76°21'W

Evans Road Fire - Hyde County  
Water Handling Map  
NC-NCS-08-048-065  
Created on July 19, 2008  
41,553 acres  
Fire Perimeter Approximate  
  
Eric Williams, GISS  
Adam Huffman, GISS (T)  
Florida Blue IMT



**Legend**

- Forced Flow Direction
- Road Closed / Dead End
- Division
- Branch
- Fire Origin
- Pump Site
- Mobile Weather Unit
- Hotspot
- Staging Area
- Water Source (Type)
- Drop Point
- Helibase
- Completed Dozer Line
- Uncontrolled Fire Edge
- Highway 94
- Bad Roads
- Road Closed
- Roads
- DOT Primary Roads
- NC
- US
- 200'
- Culvert
- Plug
- Proposed Plug
- Proposed Pump
- WCS
- Proposed Berm
- Direction of Canal Flow
- National Wildlife Refuge Boundary
- Group 1
- Group 2
- Group 3
- Group 4



76°33'W 76°32'W 76°31'W 76°30'W 76°29'W 76°28'W 76°27'W 76°26'W 76°25'W 76°24'W 76°23'W 76°22'W 76°21'W