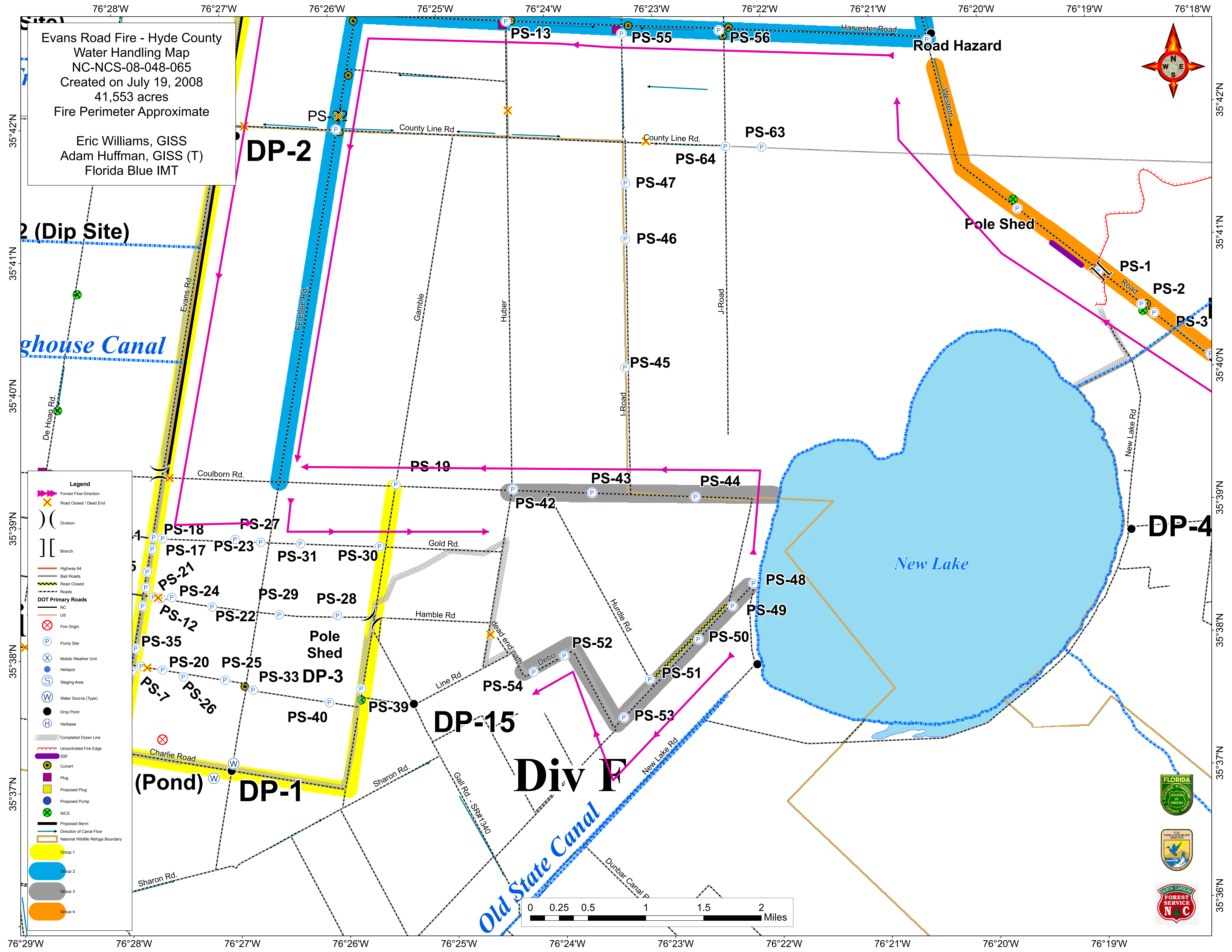


Evans Road Fire - Hyde County  
 Water Handling Map  
 NC-NCS-08-048-065  
 Created on July 19, 2008  
 41,553 acres  
 Fire Perimeter Approximate

Eric Williams, GISS  
 Adam Huffman, GISS (T)  
 Florida Blue IMT



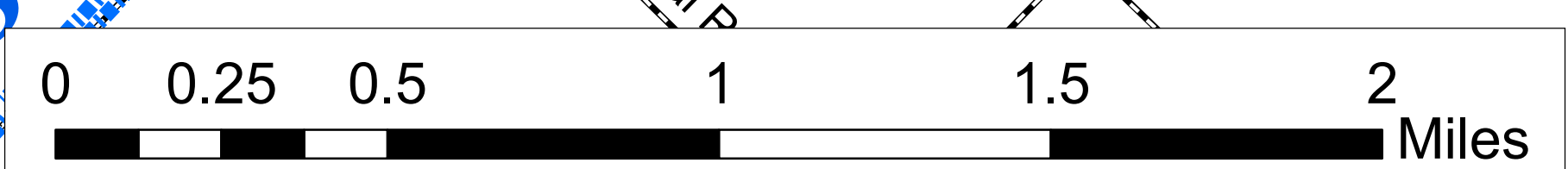
2 (Dip Site)

ghouse Canal

New Lake

Old State Canal

Div F



- Legend**
- Forced Flow Direction
  - Road Closed / Dead End
  - Division
  - Branch
  - Highway 94
  - Bad Roads
  - Road Closed
  - Roads
  - DOT Primary Roads**
  - NC
  - US
  - Fire Origin
  - Pump Site
  - Mobile Weather Unit
  - Helispot
  - Staging Area
  - Water Source (Type)
  - Drop Point
  - Helibase
  - Completed Dozer Line
  - Uncontrolled Fire Edge
  - Culvert
  - Plug
  - Proposed Plug
  - Proposed Pump
  - WCS
  - Proposed Berm
  - Direction of Canal Flow
  - National Wildlife Refuge Boundary
  - Group 1
  - Group 2
  - Group 3
  - Group 4

