

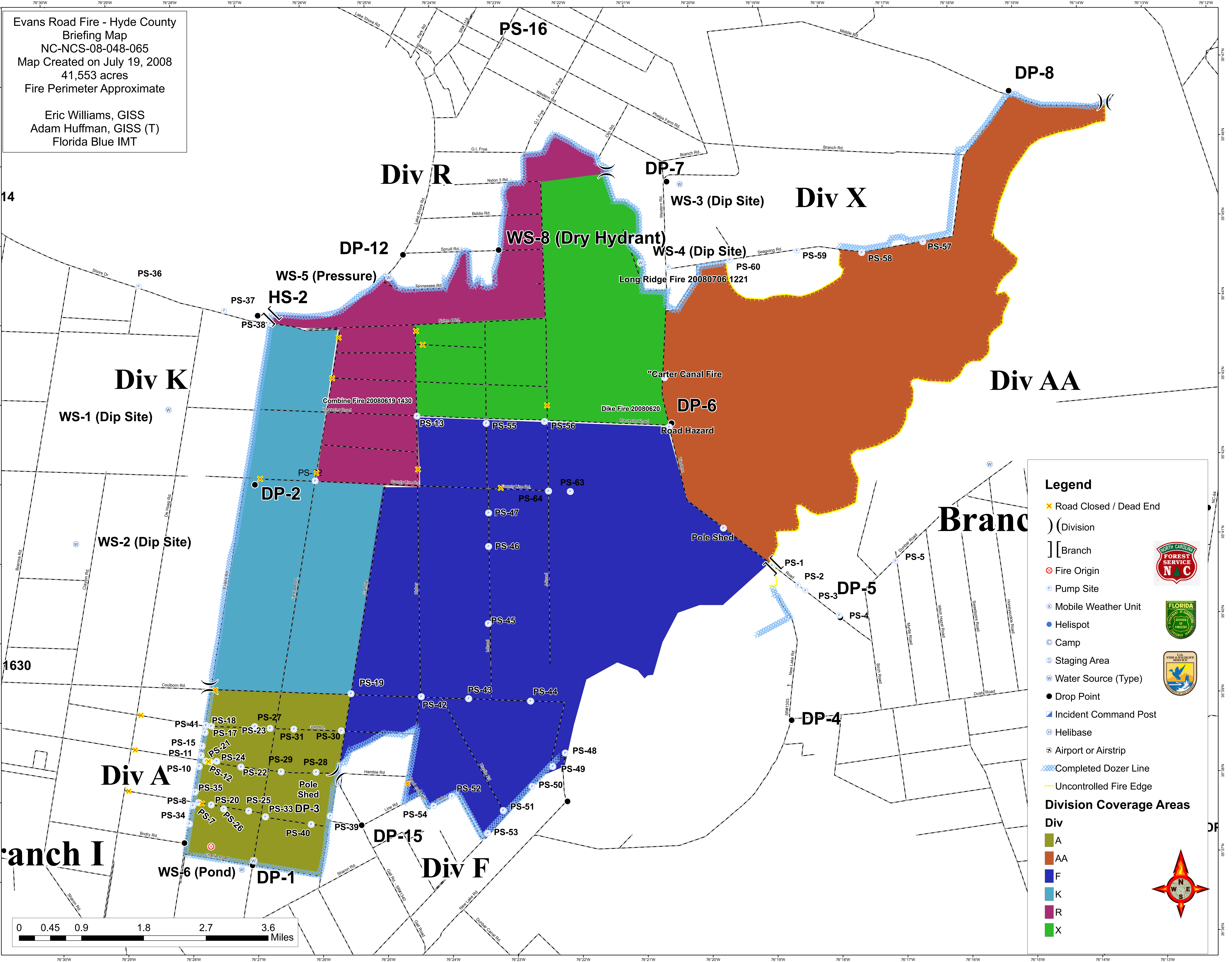
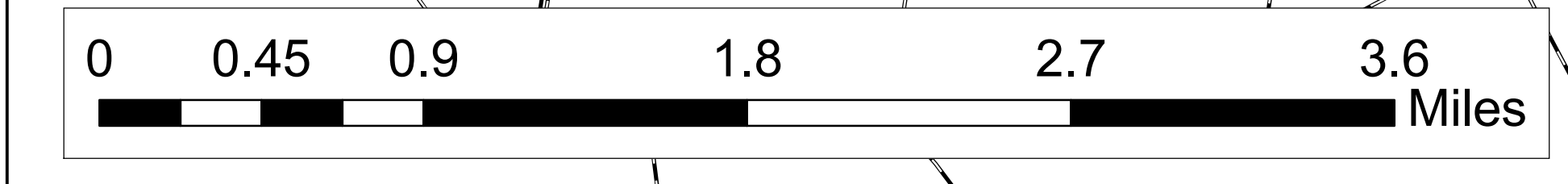
Evans Road Fire - Hyde County
 Briefing Map
 NC-NCS-08-048-065
 Map Created on July 19, 2008
 41,553 acres
 Fire Perimeter Approximate

Eric Williams, GISS
 Adam Huffman, GISS (T)
 Florida Blue IMT

14

1630

Branch I



Legend

- ✕ Road Closed / Dead End
-) (Division
-] [Branch
- ⊙ Fire Origin
- ⊙ Pump Site
- ⊗ Mobile Weather Unit
- Helispot
- ⊙ Camp
- ⊙ Staging Area
- ⊙ Water Source (Type)
- Drop Point
- ▣ Incident Command Post
- ⊕ Helibase
- ✈ Airport or Airstrip
- ▬ Completed Dozer Line
- ▬ Uncontrolled Fire Edge

Division Coverage Areas

- Div**
- A
 - AA
 - F
 - K
 - R
 - X

