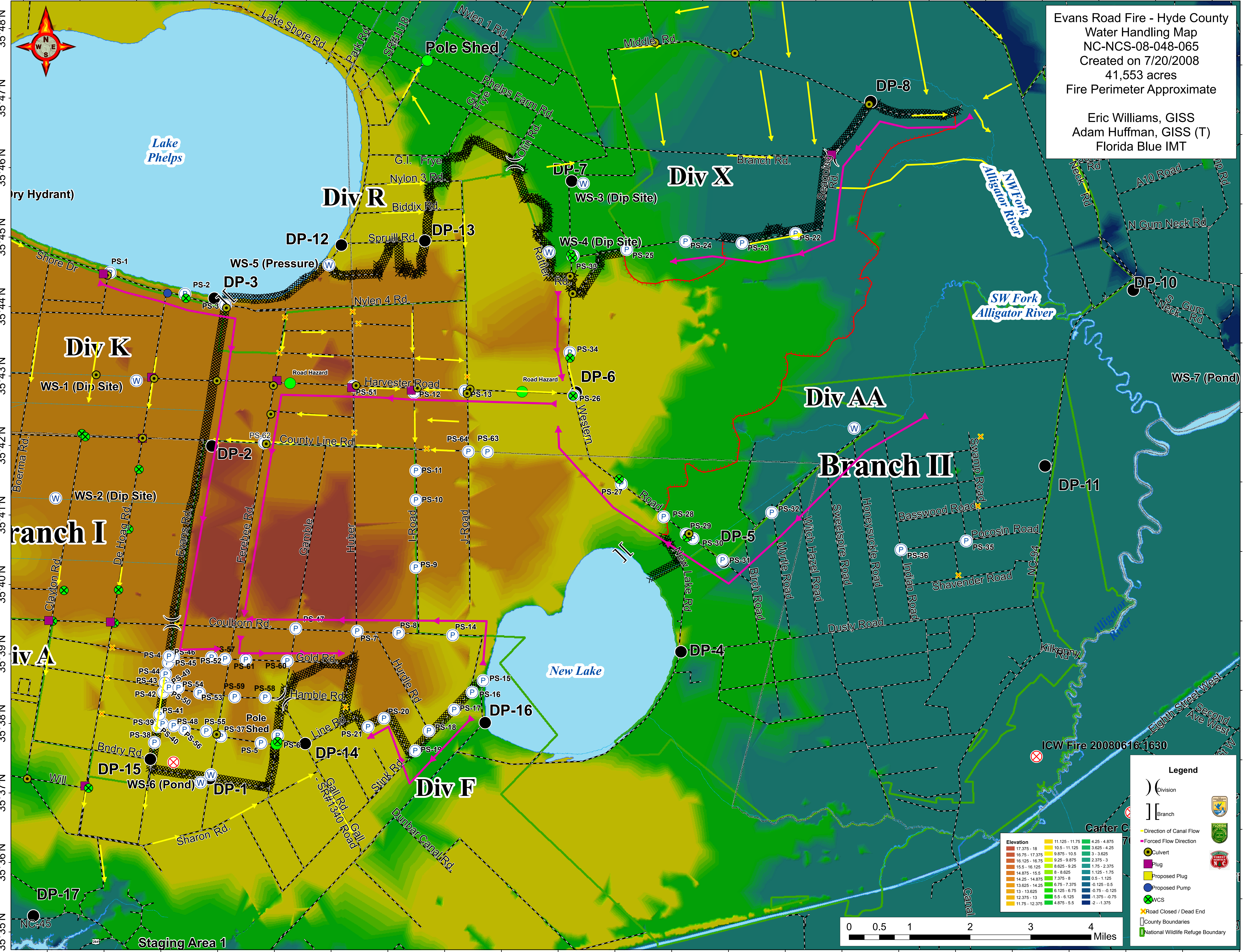


76°30'W 76°29'W 76°28'W 76°27'W 76°26'W 76°25'W 76°24'W 76°23'W 76°22'W 76°21'W 76°20'W 76°19'W 76°18'W 76°17'W 76°16'W 76°15'W 76°14'W 76°13'W 76°12'W 76°11'W 76°10'W 76°9'W



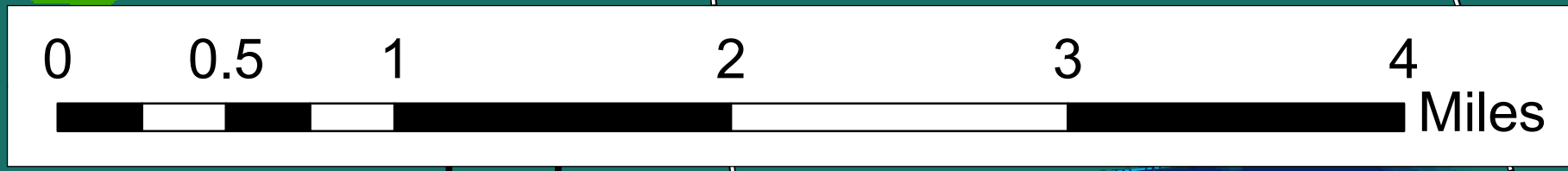
Evans Road Fire - Hyde County
Water Handling Map
NC-NCS-08-048-065
Created on 7/20/2008
41,553 acres
Fire Perimeter Approximate

Eric Williams, GISS
Adam Huffman, GISS (T)
Florida Blue IMT

Elevation	11.125 - 11.75	10.5 - 11.125	9.875 - 10.5	9.25 - 9.875	8.625 - 9.25	8 - 8.625	7.375 - 8	6.75 - 7.375	6.125 - 6.75	5.5 - 6.125	4.875 - 5.5	4.25 - 4.875	3.625 - 4.25	3 - 3.625	2.375 - 3	1.75 - 2.375	1.125 - 1.75	0.5 - 1.125	-0.125 - 0.5	-0.75 - -0.125	-1.375 - -0.75	-2 - -1.375									
17.375 - 18	16.75 - 17.375	16.125 - 16.75	15.5 - 16.125	14.875 - 15.5	14.25 - 14.875	13.625 - 14.25	13 - 13.625	12.375 - 13	11.75 - 12.375	11.125 - 11.75	10.5 - 11.125	9.875 - 10.5	9.25 - 9.875	8.625 - 9.25	8 - 8.625	7.375 - 8	6.75 - 7.375	6.125 - 6.75	5.5 - 6.125	4.875 - 5.5	4.25 - 4.875	3.625 - 4.25	3 - 3.625	2.375 - 3	1.75 - 2.375	1.125 - 1.75	0.5 - 1.125	-0.125 - 0.5	-0.75 - -0.125	-1.375 - -0.75	-2 - -1.375

Legend

- Division
- Branch
- Direction of Canal Flow
- Forced Flow Direction
- Culvert
- Plug
- Proposed Plug
- Proposed Pump
- WCS
- Road Closed / Dead End
- County Boundaries
- National Wildlife Refuge Boundary



76°30'W 76°29'W 76°28'W 76°27'W 76°26'W 76°25'W 76°24'W 76°23'W 76°22'W 76°21'W 76°20'W 76°19'W 76°18'W 76°17'W 76°16'W 76°15'W 76°14'W 76°13'W 76°12'W 76°11'W 76°10'W 76°9'W