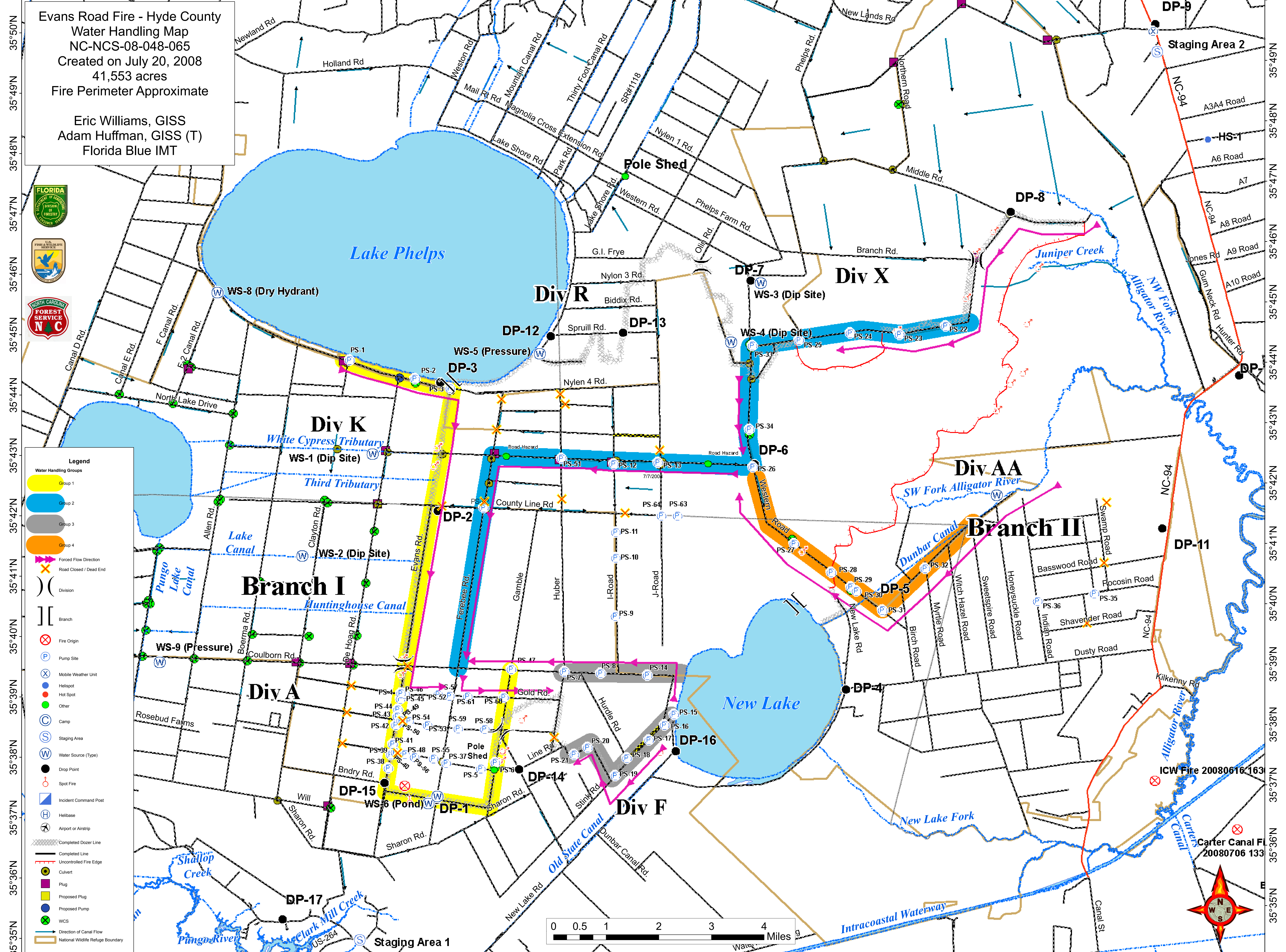


76°35'W 76°34'W 76°33'W 76°32'W 76°31'W 76°30'W 76°29'W 76°28'W 76°27'W 76°26'W 76°25'W 76°24'W 76°23'W 76°22'W 76°21'W 76°20'W 76°19'W 76°18'W 76°17'W 76°16'W 76°15'W 76°14'W 76°13'W 76°12'W 76°11'W 76°10'W



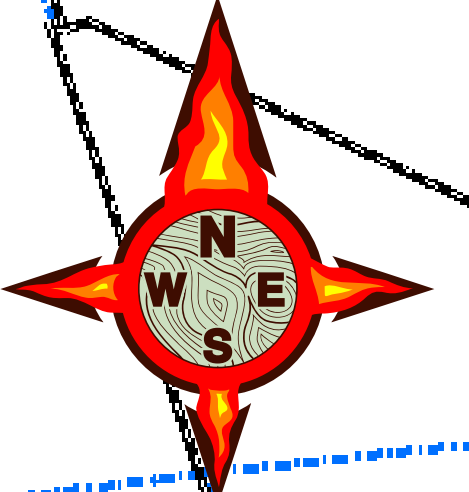
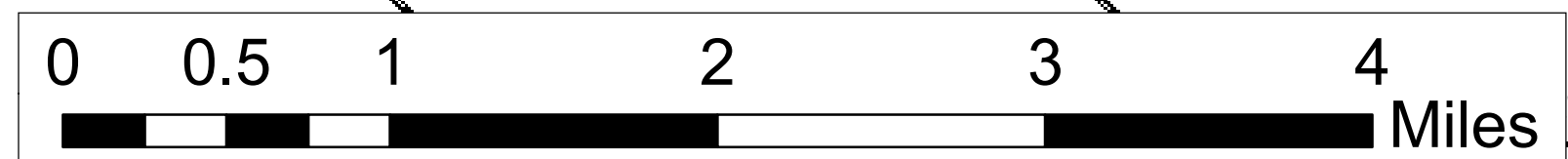
Evans Road Fire - Hyde County
Water Handling Map
NC-NCS-08-048-065
Created on July 20, 2008
41,553 acres
Fire Perimeter Approximate

Eric Williams, GISS
Adam Huffman, GISS (T)
Florida Blue IMT



Legend

- Water Handling Groups
 - Group 1 (Yellow)
 - Group 2 (Blue)
 - Group 3 (Grey)
 - Group 4 (Orange)
- Forced Flow Direction (Pink arrow)
- Road Closed / Dead End (Orange X)
- Division (Dashed line)
- Branch (Double line)
- Fire Origin (Red X)
- Pump Site (P in circle)
- Mobile Weather Unit (M in circle)
- Hot Spot (Red dot)
- Other (Green dot)
- Camp (C in circle)
- Staging Area (S in circle)
- Water Source (Type) (W in circle)
- Drop Point (Black dot)
- Spot Fire (Red circle)
- Incident Command Post (Blue square)
- Heli-base (H in circle)
- Airport or Airstrip (A in circle)
- Completed Dozer Line (Dashed line)
- Completed Line (Solid line)
- Uncontrolled Fire Edge (Red line)
- Culvert (Yellow circle)
- Proposed Plug (Yellow square)
- Proposed Pump (Blue circle)
- WCS (Green X)
- Direction of Canal Flow (Blue arrow)
- National Wildlife Refuge Boundary (Orange line)



76°35'W 76°34'W 76°33'W 76°32'W 76°31'W 76°30'W 76°29'W 76°28'W 76°27'W 76°26'W 76°25'W 76°24'W 76°23'W 76°22'W 76°21'W 76°20'W 76°19'W 76°18'W 76°17'W 76°16'W 76°15'W 76°14'W 76°13'W 76°12'W 76°11'W