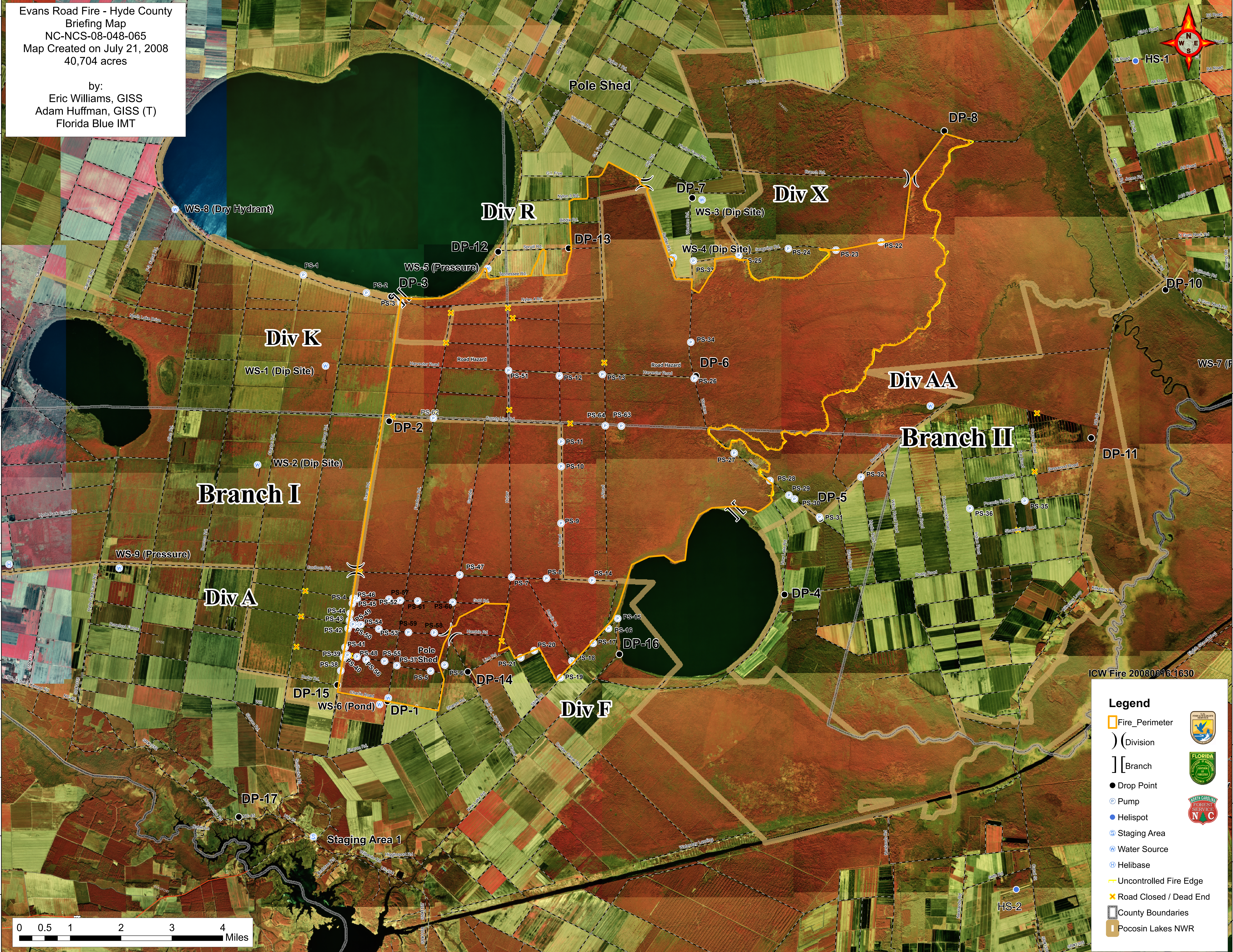


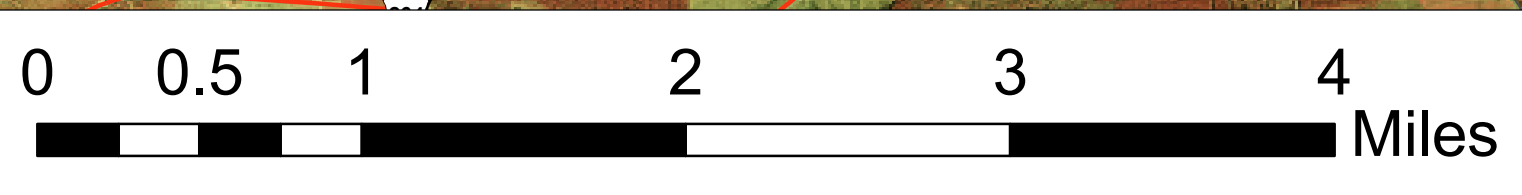
76°34'W 76°33'W 76°32'W 76°31'W 76°30'W 76°29'W 76°28'W 76°27'W 76°26'W 76°25'W 76°24'W 76°23'W 76°22'W 76°21'W 76°20'W 76°19'W 76°18'W 76°17'W 76°16'W 76°15'W 76°14'W 76°13'W 76°12'W 76°11'W 76°10'W 76°9'W

Evans Road Fire - Hyde County  
Briefing Map  
NC-NCS-08-048-065  
Map Created on July 21, 2008  
40,704 acres

by:  
Eric Williams, GISS  
Adam Huffman, GISS (T)  
Florida Blue IMT



ICW Fire 200806161630



**Legend**

- Fire\_Perimeter
- Division
- Branch
- Drop Point
- Pump
- Helispot
- Staging Area
- Water Source
- Helibase
- Uncontrolled Fire Edge
- Road Closed / Dead End
- County Boundaries
- Pocosin Lakes NWR