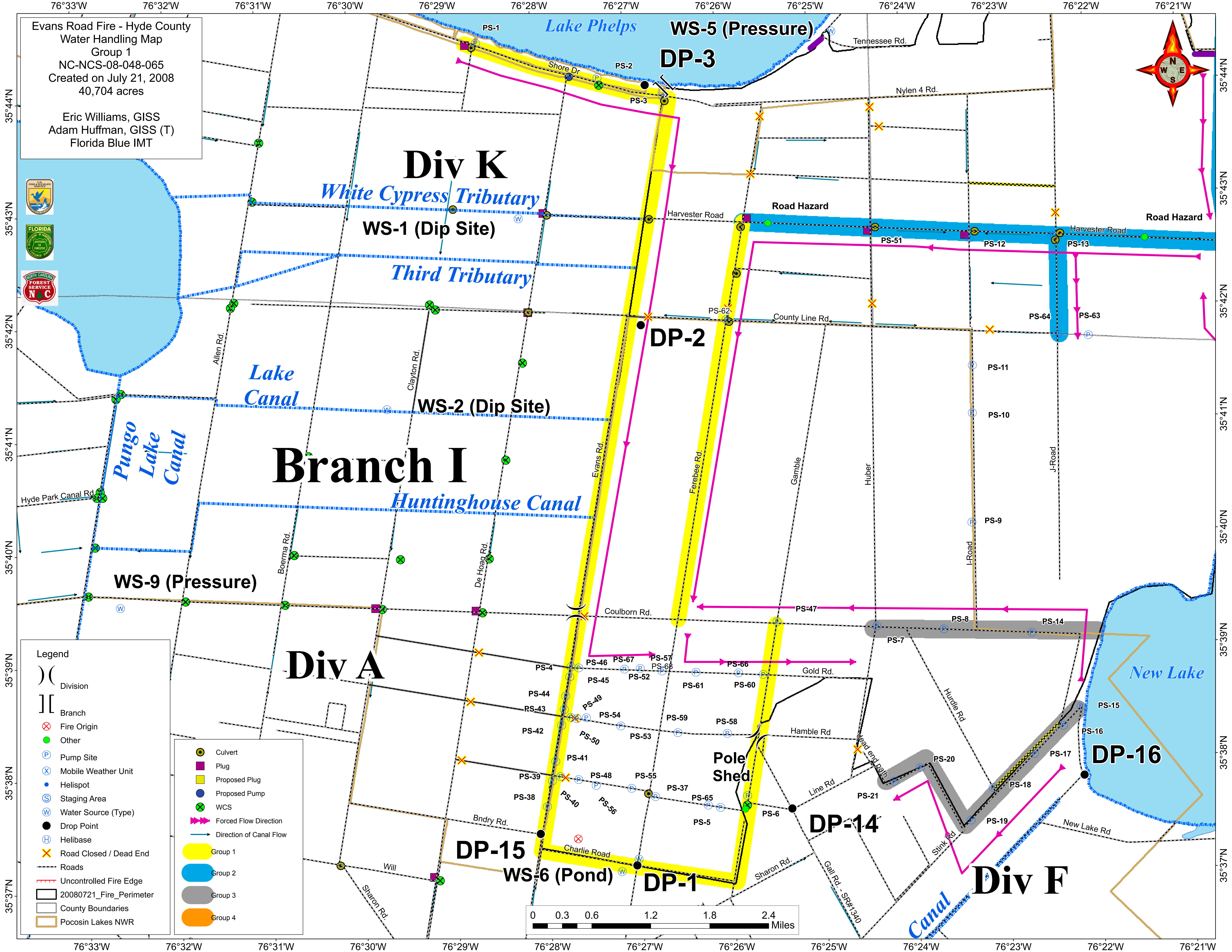
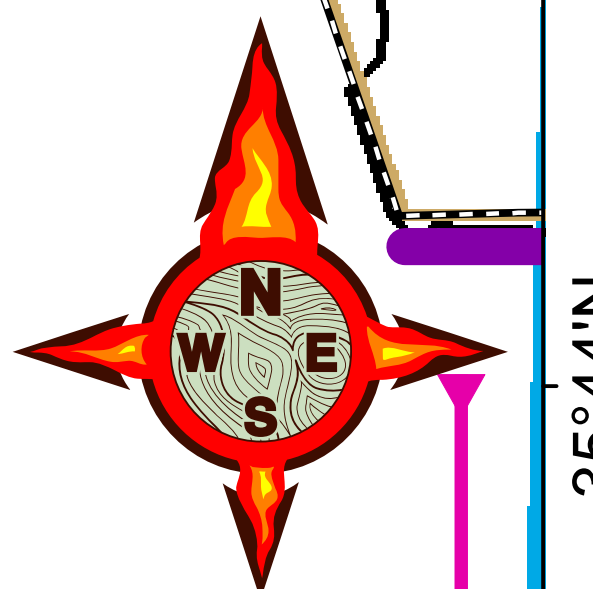
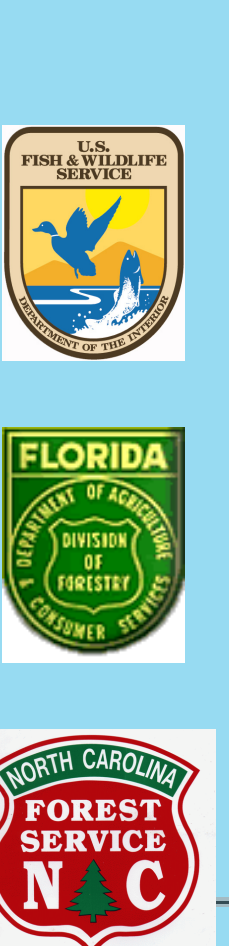


Evans Road Fire - Hyde County  
 Water Handling Map  
 Group 1  
 NC-NCS-08-048-065  
 Created on July 21, 2008  
 40,704 acres

Eric Williams, GISS  
 Adam Huffman, GISS (T)  
 Florida Blue IMT



- Legend**
- Division
  - Branch
  - X Fire Origin
  - Other
  - P Pump Site
  - X Mobile Weather Unit
  - Helispot
  - S Staging Area
  - W Water Source (Type)
  - Drop Point
  - H Helibase
  - X Road Closed / Dead End
  - Roads
  - Uncontrolled Fire Edge
  - 20080721\_Fire\_Perimeter
  - County Boundaries
  - Pocosin Lakes NWR

- Culvert
- Plug
- Proposed Plug
- Proposed Pump
- X WCS
- ▶ Forced Flow Direction
- ▶ Direction of Canal Flow
- Group 1
- Group 2
- Group 3
- Group 4

