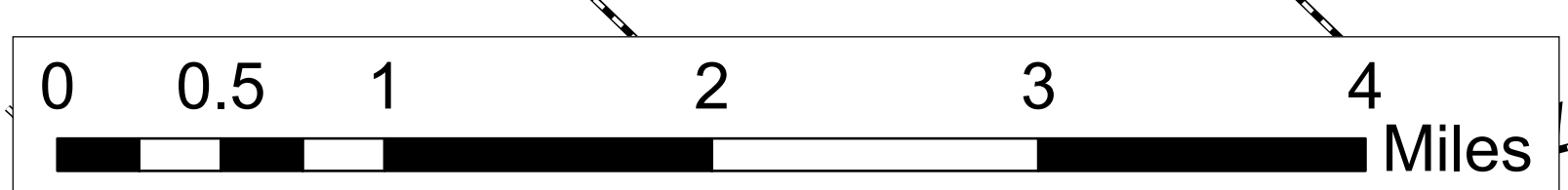
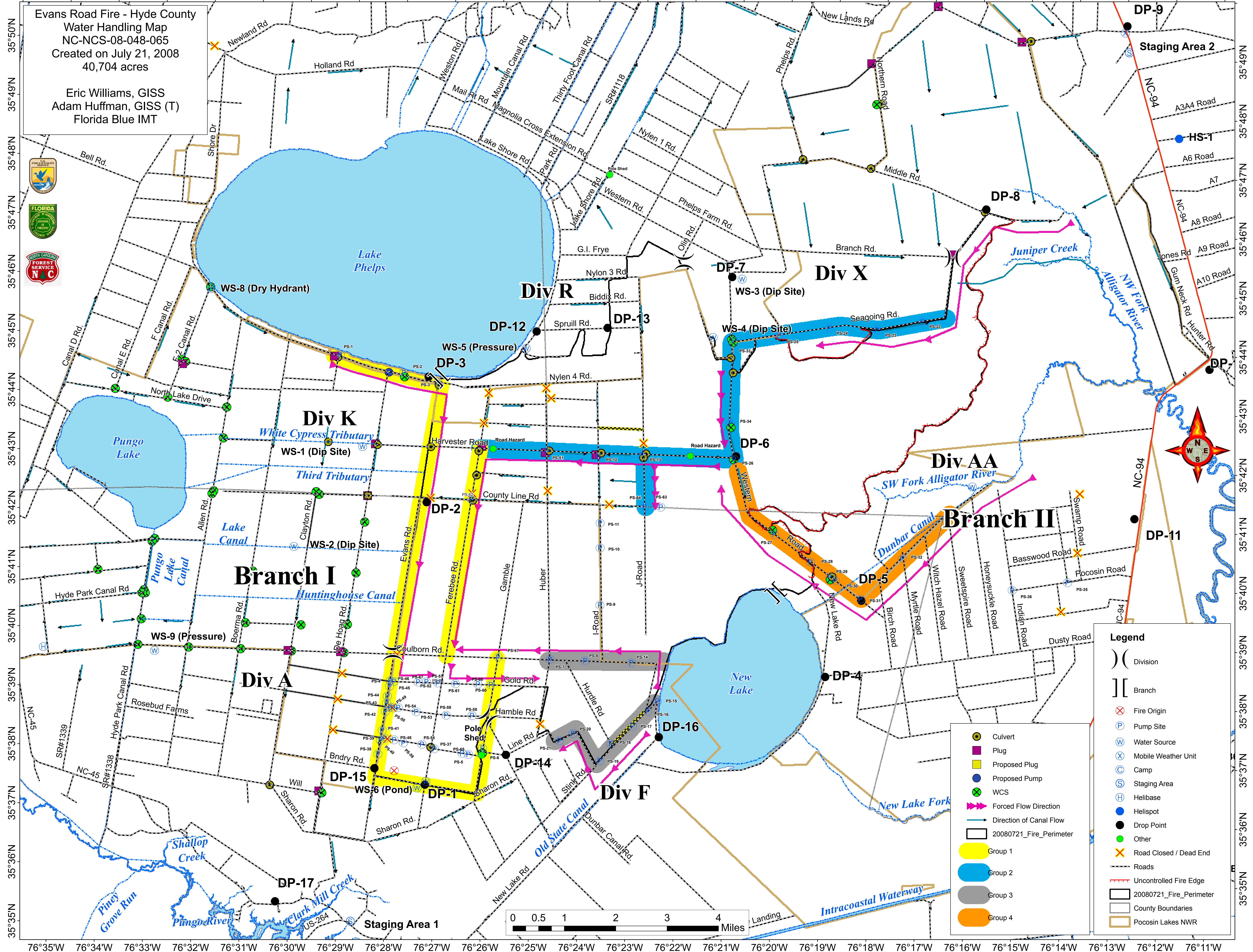
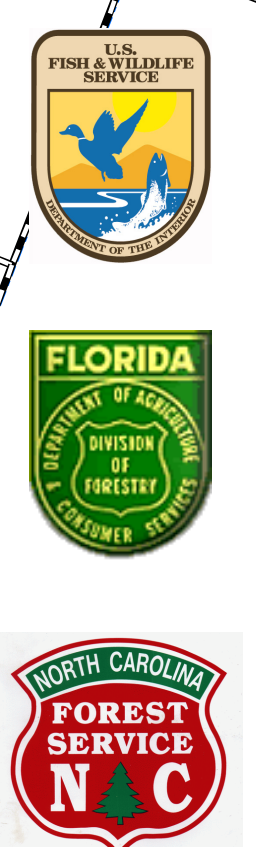


76°35'W 76°34'W 76°33'W 76°32'W 76°31'W 76°30'W 76°29'W 76°28'W 76°27'W 76°26'W 76°25'W 76°24'W 76°23'W 76°22'W 76°21'W 76°20'W 76°19'W 76°18'W 76°17'W 76°16'W 76°15'W 76°14'W 76°13'W 76°12'W 76°11'W 76°10'W

Evans Road Fire - Hyde County  
Water Handling Map  
NC-NCS-08-048-065  
Created on July 21, 2008  
40,704 acres

Eric Williams, GISS  
Adam Huffman, GISS (T)  
Florida Blue IMT



**Legend**

- ( ) Division
- [ ] Branch
- ⊗ Fire Origin
- ⊕ Pump Site
- ⊙ Water Source
- ⊗ Mobile Weather Unit
- ⊙ Camp
- ⊙ Staging Area
- ⊙ Helibase
- ⊙ Helispot
- Drop Point
- Other
- ⊗ Road Closed / Dead End
- Roads
- Uncontrolled Fire Edge
- 20080721\_Fire\_Perimeter
- County Boundaries
- Pocosin Lakes NWR

- Culvert
- Plug
- Proposed Plug
- Proposed Pump
- WCS
- ➔ Forced Flow Direction
- ➔ Direction of Canal Flow
- 20080721\_Fire\_Perimeter
- Group 1
- Group 2
- Group 3
- Group 4