

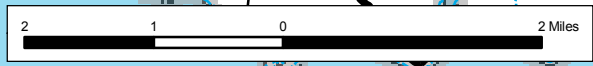
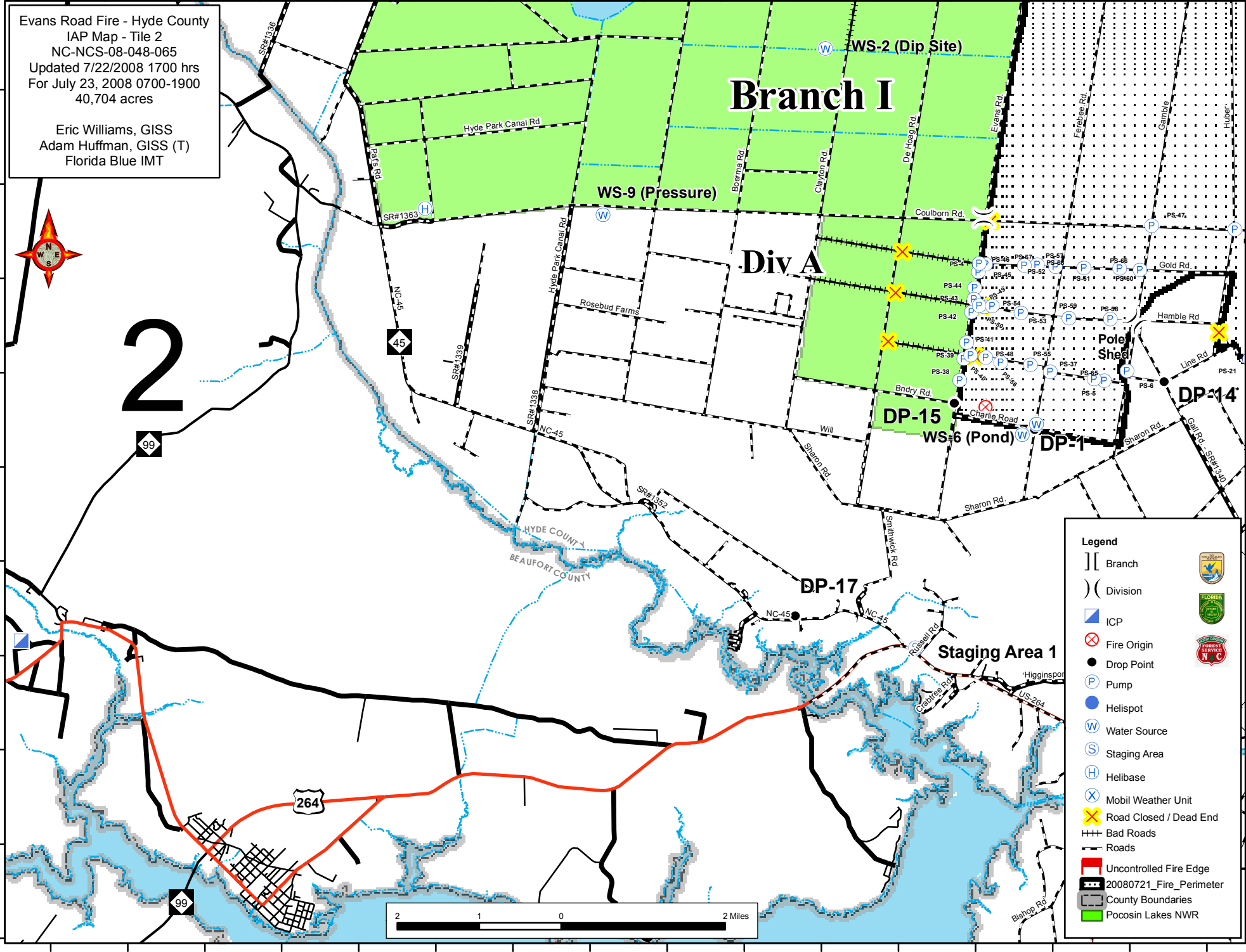
76°40'W 76°39'W 76°38'W 76°37'W 76°36'W 76°35'W 76°34'W 76°33'W 76°32'W 76°31'W 76°30'W 76°29'W 76°28'W 76°27'W 76°26'W 76°25'W

Evans Road Fire - Hyde County
IAP Map - Tile 2
NC-NCS-08-048-065
Updated 7/22/2008 1700 hrs
For July 23, 2008 0700-1900
40,704 acres

Eric Williams, GISS
Adam Huffman, GISS (T)
Florida Blue IMT



2



Legend

- Branch
- Division
- ICP
- Fire Origin
- Drop Point
- Pump
- Helispot
- Water Source
- Staging Area
- Helibase
- Mobil Weather Unit
- Road Closed / Dead End
- Bad Roads
- Roads
- Uncontrolled Fire Edge
- 20080721_Fire_Perimeter
- County Boundaries
- Pocosin Lakes NWR

35°41'N
35°40'N
35°39'N
35°38'N
35°37'N
35°36'N
35°35'N
35°34'N
35°33'N
35°32'N

76°40'W 76°39'W 76°38'W 76°37'W 76°36'W 76°35'W 76°34'W 76°33'W 76°32'W 76°31'W 76°30'W 76°29'W 76°28'W 76°27'W 76°26'W 76°25'W