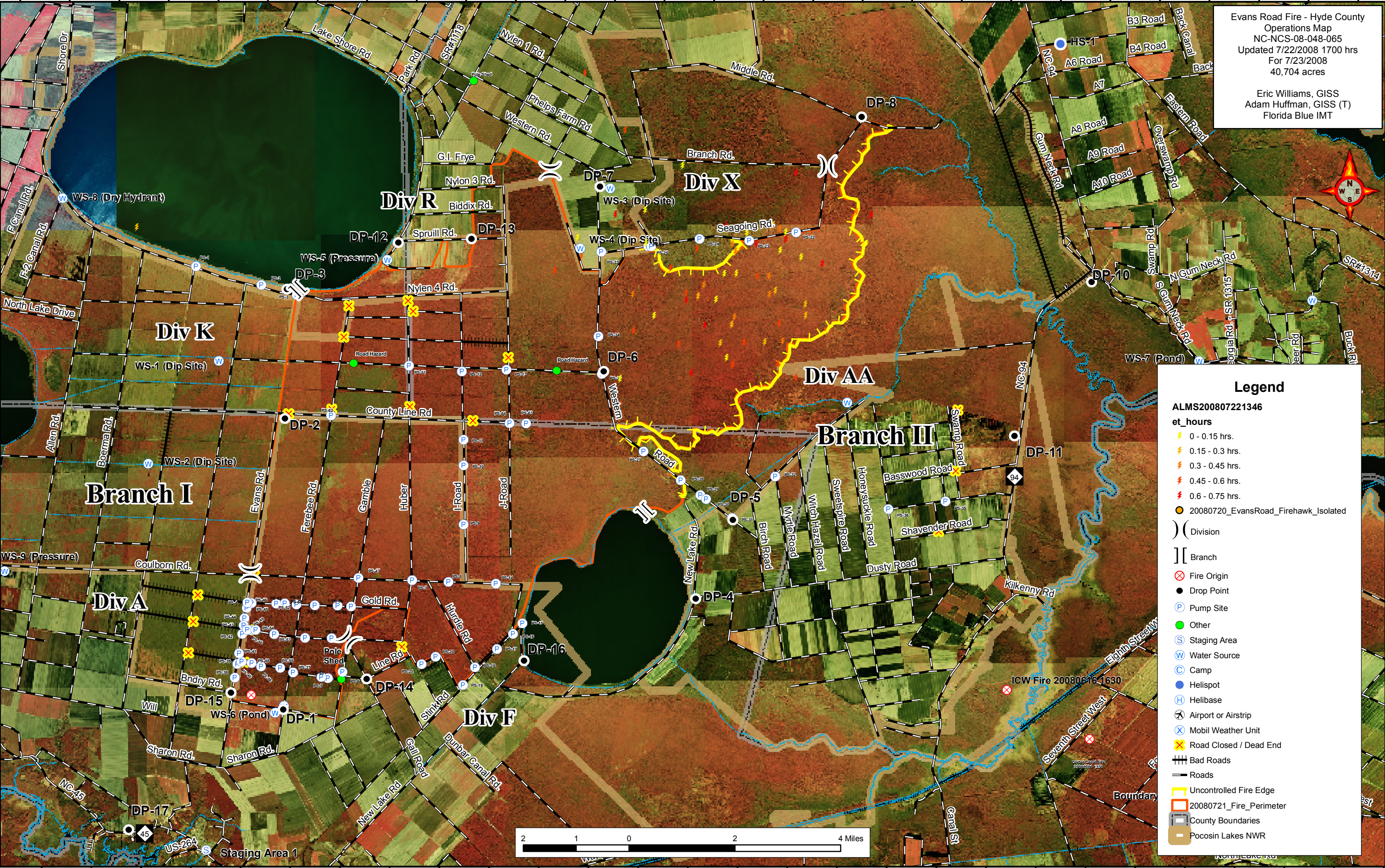


76°32'W 76°31'W 76°30'W 76°29'W 76°28'W 76°27'W 76°26'W 76°25'W 76°24'W 76°23'W 76°22'W 76°21'W 76°20'W 76°19'W 76°18'W 76°17'W 76°16'W 76°15'W 76°14'W 76°13'W 76°12'W 76°11'W 76°10'W 76°9'W 76°8'W 76°7'W 76°6'W 76°5'W



Evans Road Fire - Hyde County  
Operations Map  
NC-NCS-08-048-065  
Updated 7/22/2008 1700 hrs  
For 7/23/2008  
40,704 acres  
  
Eric Williams, GISS  
Adam Huffman, GISS (T)  
Florida Blue IMT



### Legend

ALMS200807221346

**et\_hours**

- 0 - 0.15 hrs.
- 0.15 - 0.3 hrs.
- 0.3 - 0.45 hrs.
- 0.45 - 0.6 hrs.
- 0.6 - 0.75 hrs.
- 20080720\_EvansRoad\_Firehawk\_Isolated

**Other Symbols:**

- Division
- Branch
- Fire Origin
- Drop Point
- Pump Site
- Other
- Staging Area
- Water Source
- Camp
- Helibase
- Airport or Airstrip
- Mobil Weather Unit
- Road Closed / Dead End
- Bad Roads
- Roads
- Uncontrolled Fire Edge
- 20080721\_Fire\_Perimeter
- County Boundaries
- Pocosin Lakes NWR



76°32'W 76°31'W 76°30'W 76°29'W 76°28'W 76°27'W 76°26'W 76°25'W 76°24'W 76°23'W 76°22'W 76°21'W 76°20'W 76°19'W 76°18'W 76°17'W 76°16'W 76°15'W 76°14'W 76°13'W 76°12'W 76°11'W 76°10'W 76°9'W 76°8'W 76°7'W 76°6'W 76°5'W

35°48'N 35°47'N 35°46'N 35°45'N 35°44'N 35°43'N 35°42'N 35°41'N 35°40'N 35°39'N 35°38'N 35°37'N 35°36'N 35°35'N

35°48'N 35°47'N 35°46'N 35°45'N 35°44'N 35°43'N 35°42'N 35°41'N 35°40'N 35°39'N 35°38'N 35°37'N 35°36'N 35°35'N