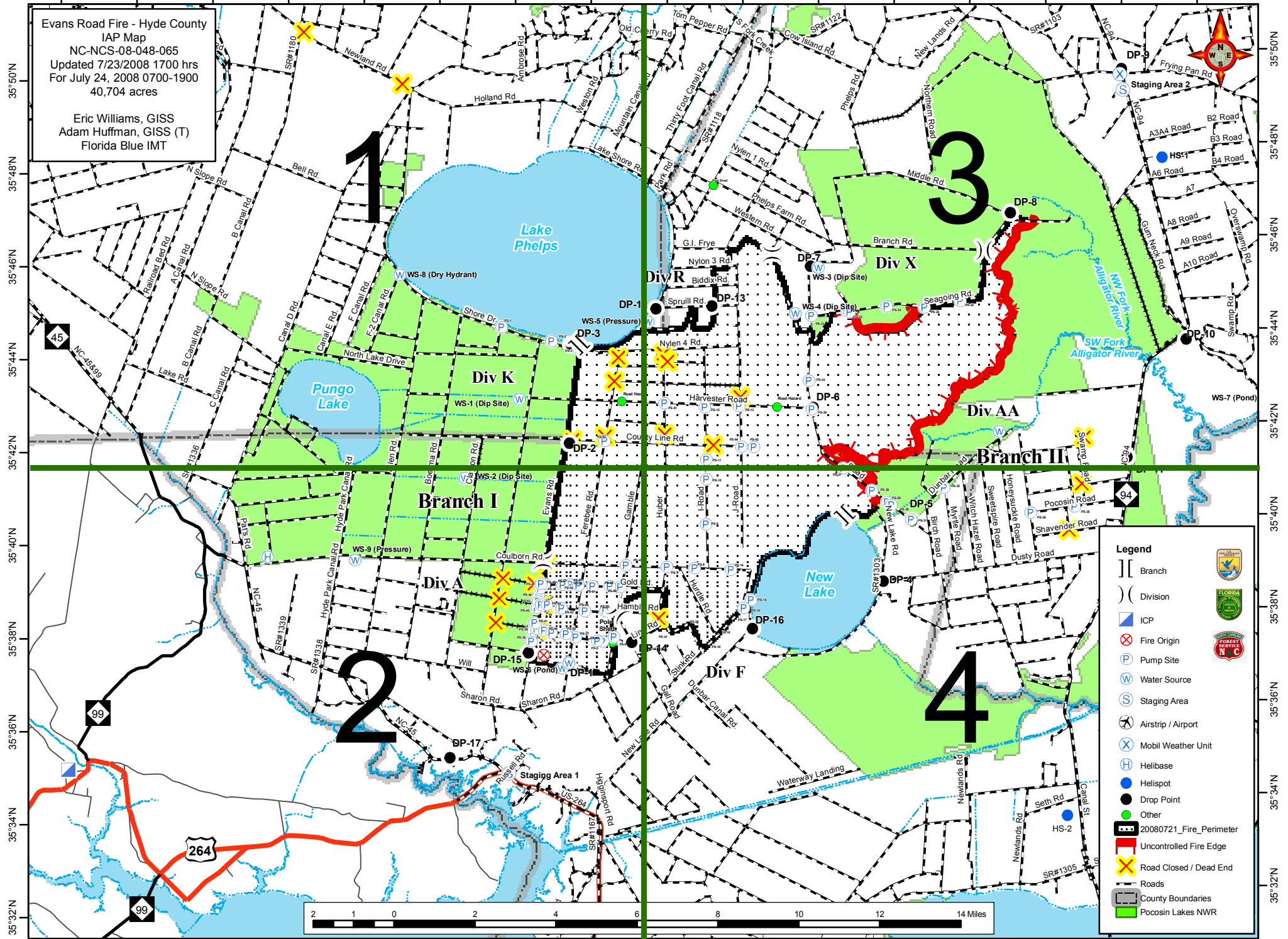


76°40'W 76°38'W 76°36'W 76°34'W 76°32'W 76°30'W 76°28'W 76°26'W 76°24'W 76°22'W 76°20'W 76°18'W 76°16'W 76°14'W 76°12'W 76°10'W

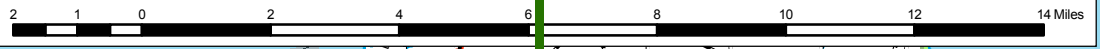
Evans Road Fire - Hyde County
IAP Map
NC-NCS-08-048-065
Updated 7/23/2008 1700 hrs
For July 24, 2008 0700-1900
40,704 acres

Eric Williams, GISS
Adam Huffman, GISS (T)
Florida Blue IMT



Legend

- Branch
- Division
- ICP
- Fire Origin
- Pump Site
- Water Source
- Staging Area
- Airstrip / Airport
- Mobil Weather Unit
- Helibase
- Helispot
- Drop Point
- Other
- 20080721_Fire_Perimeter
- Uncontrolled Fire Edge
- Road Closed / Dead End
- Roads
- County Boundaries
- Pocosin Lakes NWR



76°40'W 76°38'W 76°36'W 76°34'W 76°32'W 76°30'W 76°28'W 76°26'W 76°24'W 76°22'W 76°20'W 76°18'W 76°16'W 76°14'W 76°12'W 76°10'W

35°50'N
35°48'N
35°46'N
35°44'N
35°42'N
35°40'N
35°38'N
35°36'N
35°34'N
35°32'N

35°50'N
35°48'N
35°46'N
35°44'N
35°42'N
35°40'N
35°38'N
35°36'N
35°34'N
35°32'N