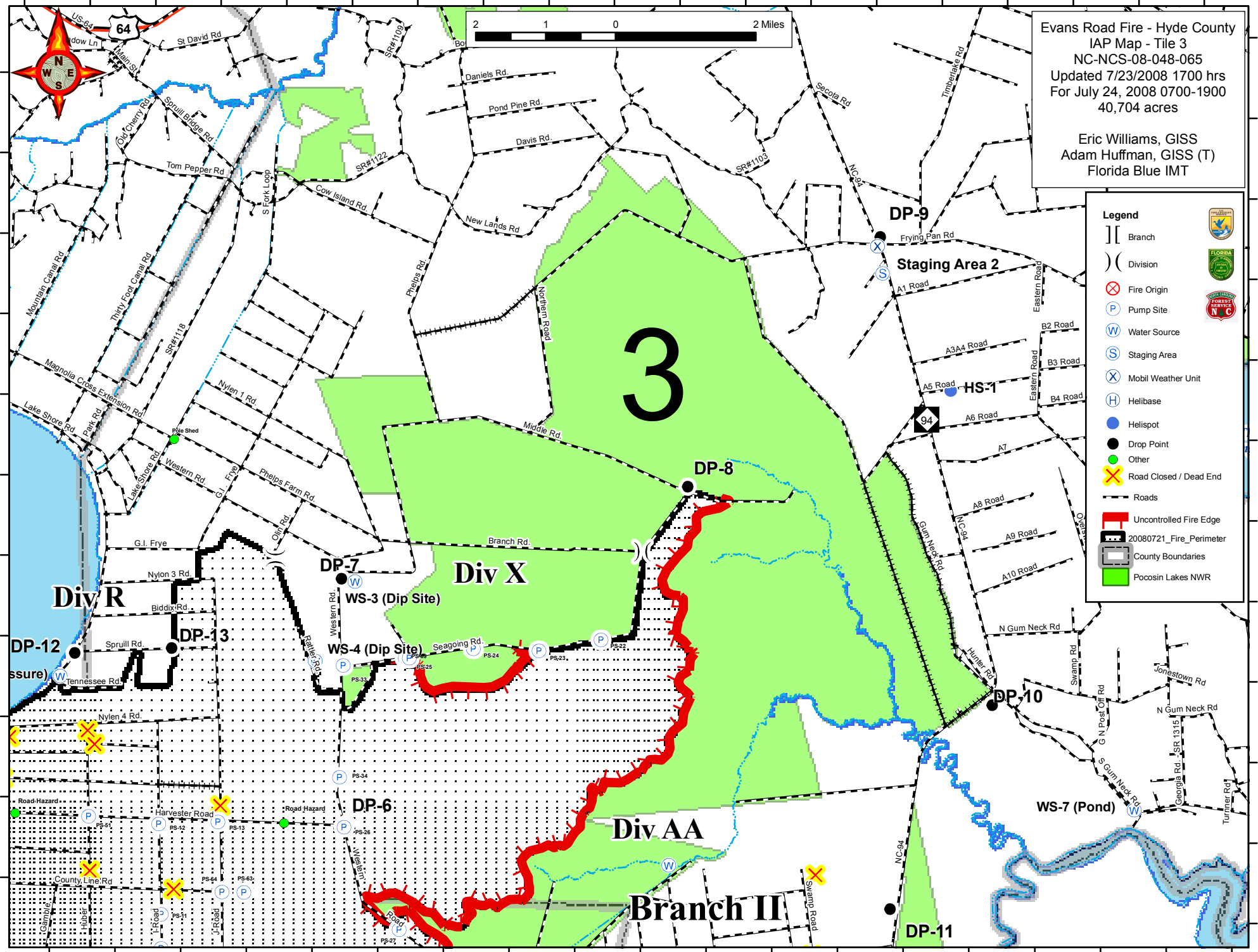


76°25'W 76°24'W 76°23'W 76°22'W 76°21'W 76°20'W 76°19'W 76°18'W 76°17'W 76°16'W 76°15'W 76°14'W 76°13'W 76°12'W 76°11'W 76°10'W 76°9'W 76°8'W 76°7'W



Evans Road Fire - Hyde County  
IAP Map - Tile 3  
NC-NCS-08-048-065  
Updated 7/23/2008 1700 hrs  
For July 24, 2008 0700-1900  
40,704 acres

Eric Williams, GISS  
Adam Huffman, GISS (T)  
Florida Blue IMT

**Legend**

- Branch
- Division
- Fire Origin
- Pump Site
- Water Source
- Staging Area
- Mobil Weather Unit
- Helibase
- Helispot
- Drop Point
- Other
- Road Closed / Dead End
- Roads
- Uncontrolled Fire Edge
- 20080721\_Fire\_Perimeter
- County Boundaries
- Pocosin Lakes NWR

35°52'N 35°51'N 35°50'N 35°49'N 35°48'N 35°47'N 35°46'N 35°45'N 35°44'N 35°43'N 35°42'N 35°41'N

76°25'W 76°24'W 76°23'W 76°22'W 76°21'W 76°20'W 76°19'W 76°18'W 76°17'W 76°16'W 76°15'W 76°14'W 76°13'W 76°12'W 76°11'W 76°10'W 76°9'W 76°8'W 76°7'W