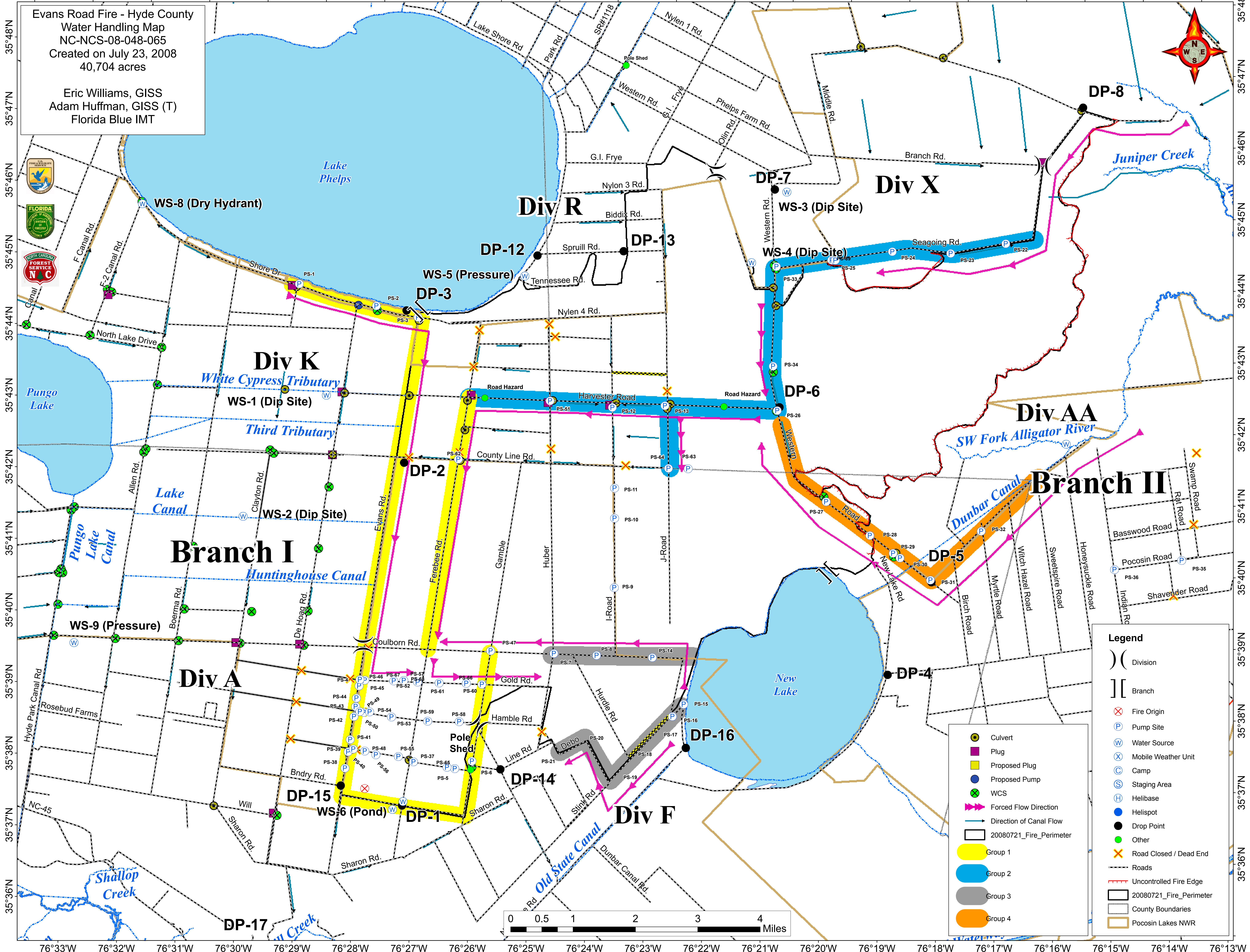


76°33'W 76°32'W 76°31'W 76°30'W 76°29'W 76°28'W 76°27'W 76°26'W 76°25'W 76°24'W 76°23'W 76°22'W 76°21'W 76°20'W 76°19'W 76°18'W 76°17'W 76°16'W 76°15'W 76°14'W 76°13'W

Evans Road Fire - Hyde County
Water Handling Map
NC-NCS-08-048-065
Created on July 23, 2008
40,704 acres

Eric Williams, GISS
Adam Huffman, GISS (T)
Florida Blue IMT

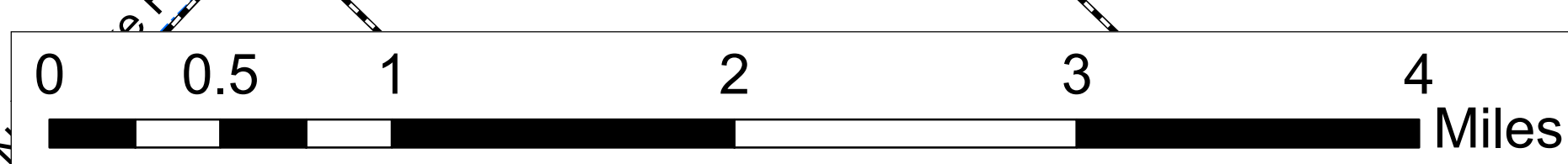


Branch I

Branch II

- Legend**
- () Division
 - [] Branch
 - ⊗ Fire Origin
 - ⊕ Pump Site
 - ⊙ Mobile Weather Unit
 - ⊙ Camp
 - ⊙ Staging Area
 - ⊙ Helibase
 - ⊙ Helispot
 - Drop Point
 - Other
 - ⊗ Road Closed / Dead End
 - Roads
 - Uncontrolled Fire Edge
 - 20080721_Fire_Perimeter
 - County Boundaries
 - Pocosin Lakes NWR

- Culvert
- Plug
- Proposed Plug
- Proposed Pump
- WCS
- Forced Flow Direction
- Direction of Canal Flow
- 20080721_Fire_Perimeter
- Group 1
- Group 2
- Group 3
- Group 4



76°33'W 76°32'W 76°31'W 76°30'W 76°29'W 76°28'W 76°27'W 76°26'W 76°25'W 76°24'W 76°23'W 76°22'W 76°21'W 76°20'W 76°19'W 76°18'W 76°17'W 76°16'W 76°15'W 76°14'W 76°13'W