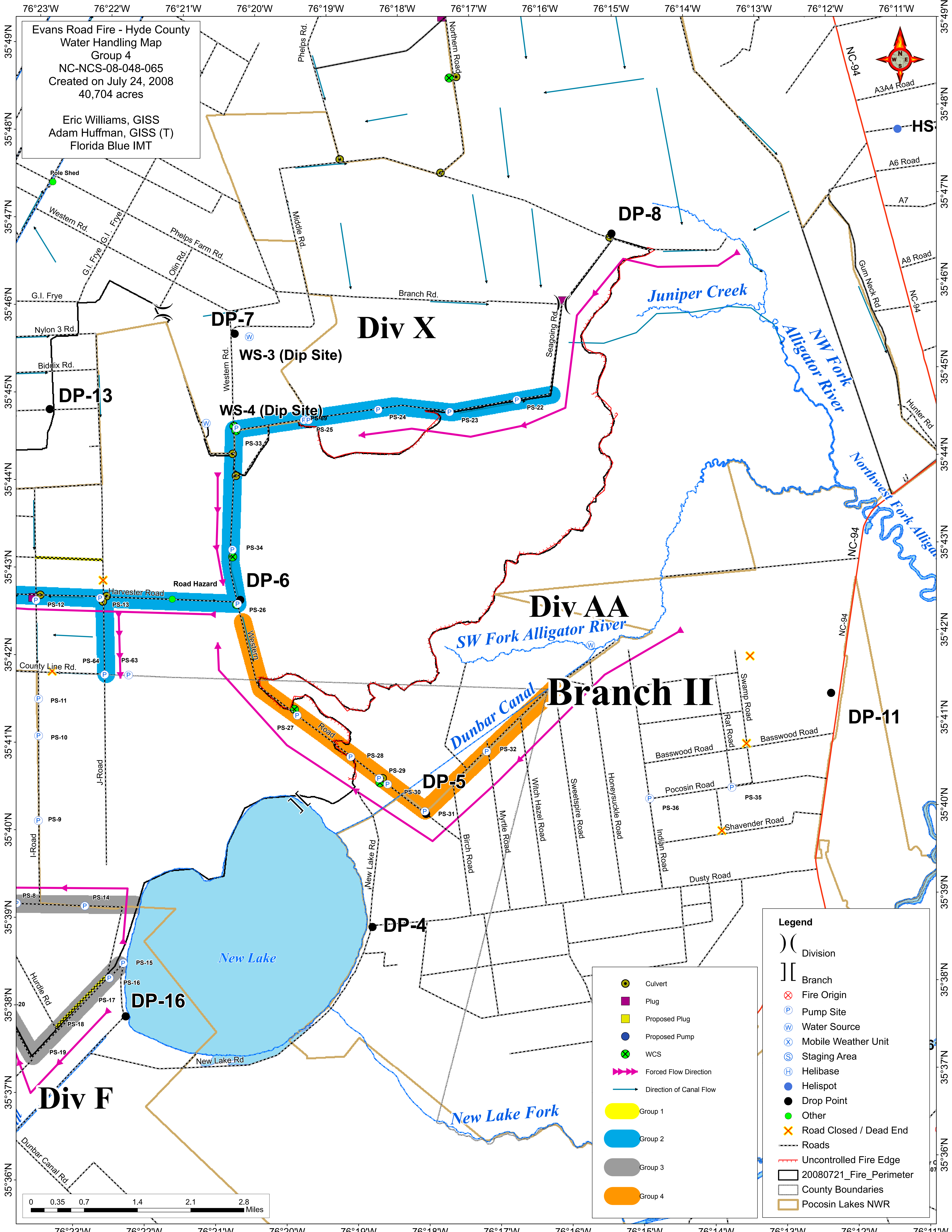


76°23'W 76°22'W 76°21'W 76°20'W 76°19'W 76°18'W 76°17'W 76°16'W 76°15'W 76°14'W 76°13'W 76°12'W 76°11'W

Evans Road Fire - Hyde County
Water Handling Map
Group 4
NC-NCS-08-048-065
Created on July 24, 2008
40,704 acres

Eric Williams, GISS
Adam Huffman, GISS (T)
Florida Blue IMT



Legend

- Division
- Branch
- Fire Origin
- Pump Site
- Water Source
- Mobile Weather Unit
- Staging Area
- Helibase
- Helispot
- Drop Point
- Other
- Road Closed / Dead End
- Roads
- Uncontrolled Fire Edge
- 20080721_Fire_Perimeter
- County Boundaries
- Pocosin Lakes NWR

- Culvert
- Plug
- Proposed Plug
- Proposed Pump
- WCS
- Forced Flow Direction
- Direction of Canal Flow
- Group 1
- Group 2
- Group 3
- Group 4

76°23'W 76°22'W 76°21'W 76°20'W 76°19'W 76°18'W 76°17'W 76°16'W 76°15'W 76°14'W 76°13'W 76°12'W 76°11'W