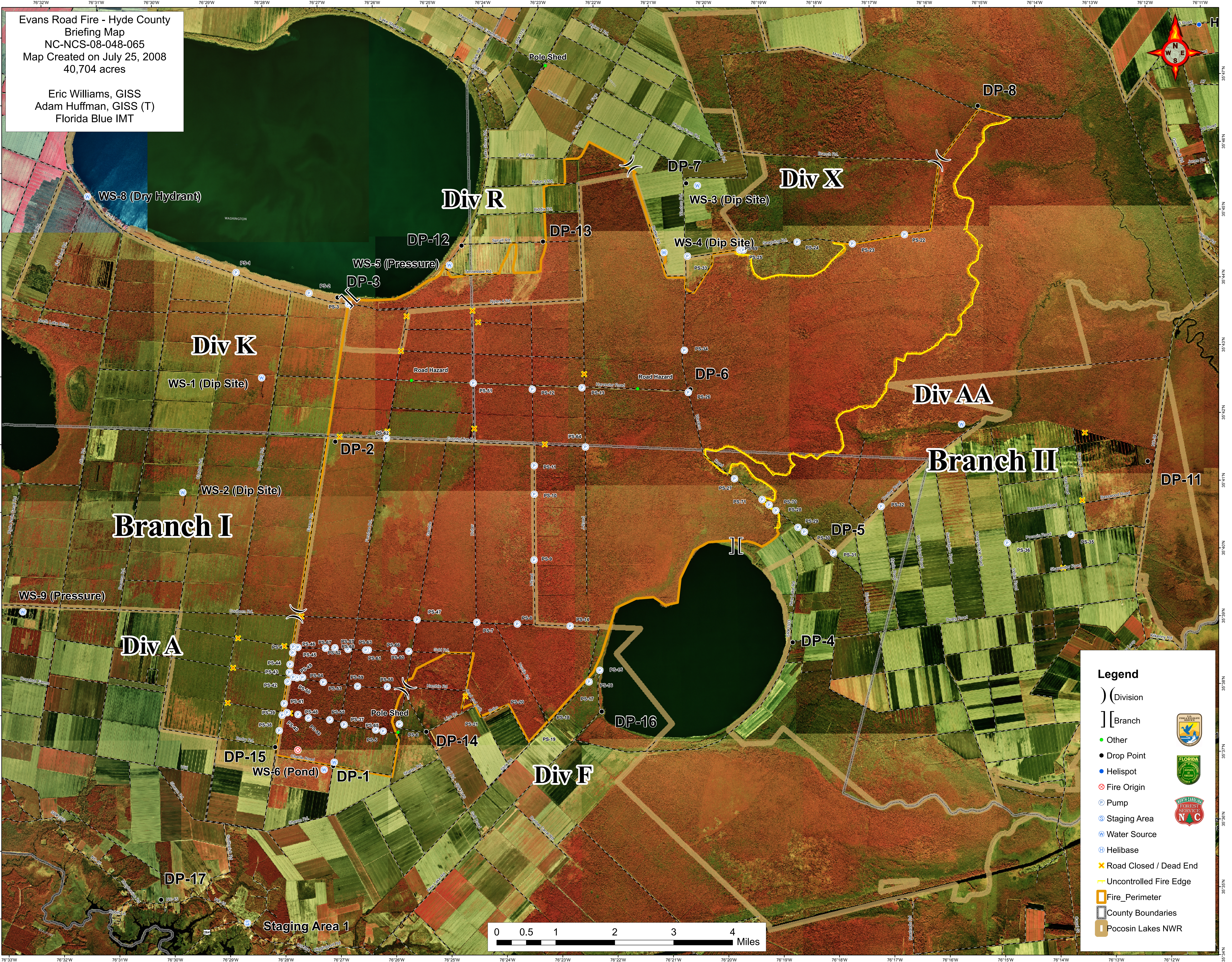
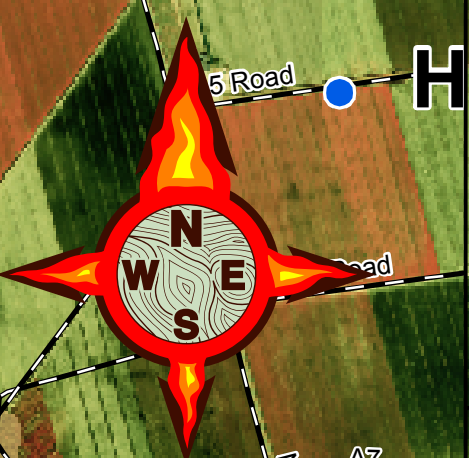


Evans Road Fire - Hyde County  
 Briefing Map  
 NC-NCS-08-048-065  
 Map Created on July 25, 2008  
 40,704 acres

Eric Williams, GISS  
 Adam Huffman, GISS (T)  
 Florida Blue IMT



**Legend**

- ( ) Division
- [ ] Branch
- Other
- Drop Point
- Helispot
- Fire Origin
- Pump
- Staging Area
- Water Source
- Helibase
- ✕ Road Closed / Dead End
- Uncontrolled Fire Edge
- ▭ Fire Perimeter
- ▭ County Boundaries
- ▭ Pocosin Lakes NWR

