

76°30'W

76°25'W

76°20'W

76°15'W

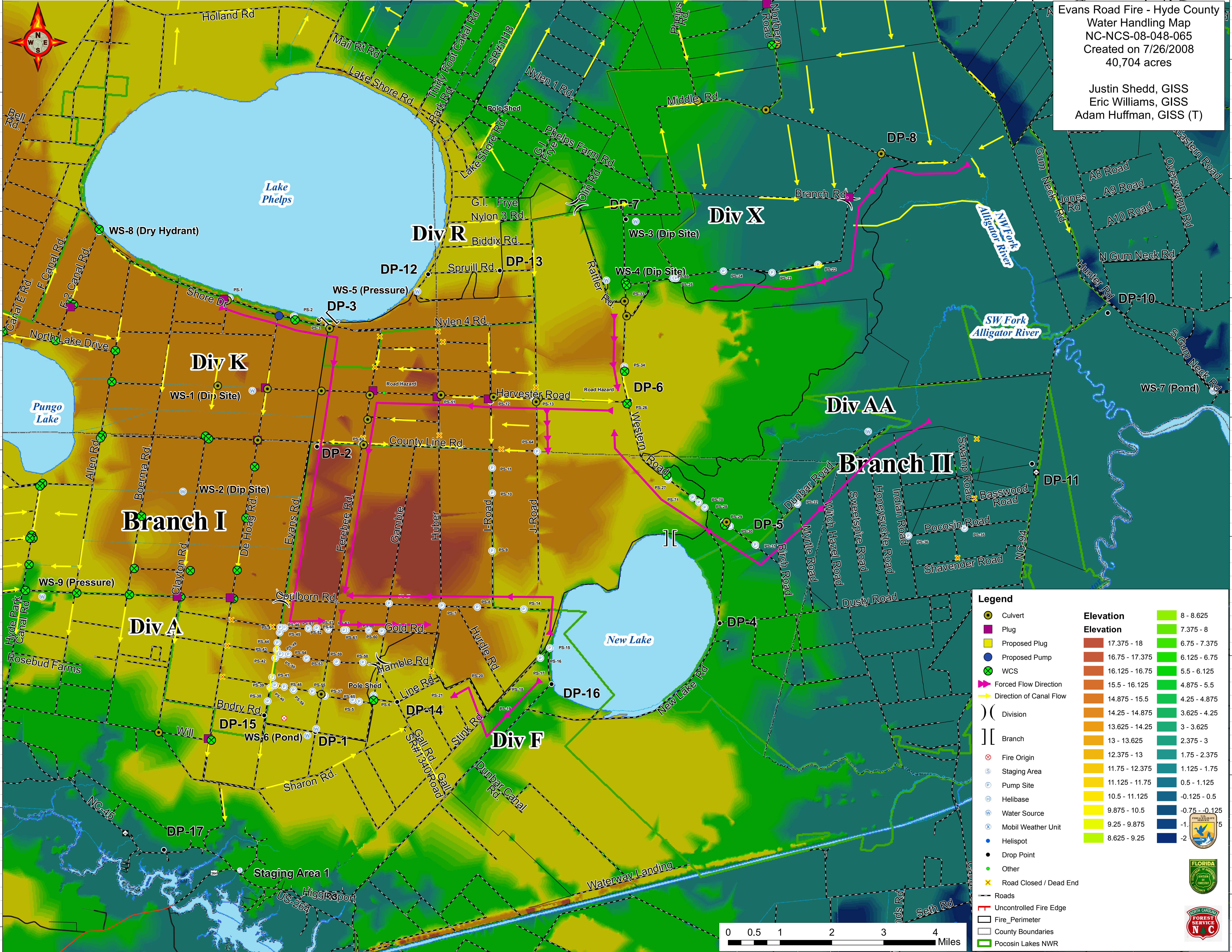
76°10'W

35°48'N
35°46'N
35°44'N
35°42'N
35°40'N
35°38'N
35°36'N
35°34'N

35°48'N
35°46'N
35°44'N
35°42'N
35°40'N
35°38'N
35°36'N
35°34'N

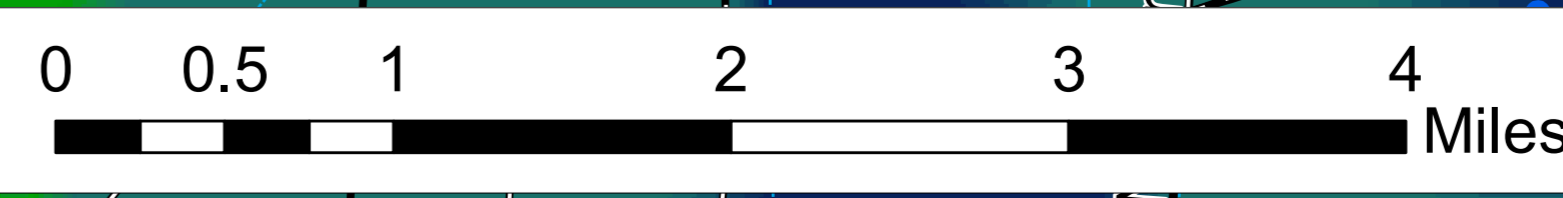
Evans Road Fire - Hyde County
Water Handling Map
 NC-NCS-08-048-065
 Created on 7/26/2008
 40,704 acres

Justin Shedd, GISS
 Eric Williams, GISS
 Adam Huffman, GISS (T)



Legend

	Culvert		8 - 8.625
	Plug		7.375 - 8
	Proposed Plug		6.75 - 7.375
	Proposed Pump		6.125 - 6.75
	WCS		5.5 - 6.125
	Forced Flow Direction		4.875 - 5.5
	Direction of Canal Flow		4.25 - 4.875
	Division		3.625 - 4.25
	Branch		3 - 3.625
	Fire Origin		2.375 - 3
	Staging Area		1.75 - 2.375
	Pump Site		1.125 - 1.75
	Helibase		0.5 - 1.125
	Water Source		-0.125 - 0.5
	Mobil Weather Unit		-0.75 - 0.125
	Helispot		-1 - 1.5
	Drop Point		8.625 - 9.25
	Other		17.375 - 18
	Road Closed / Dead End		16.75 - 17.375
	Roads		16.125 - 16.75
	Uncontrolled Fire Edge		15.5 - 16.125
	Fire Perimeter		14.875 - 15.5
	County Boundaries		14.25 - 14.875
	Pocosin Lakes NWR		13.625 - 14.25



76°30'W

76°25'W

76°20'W

76°15'W

76°10'W