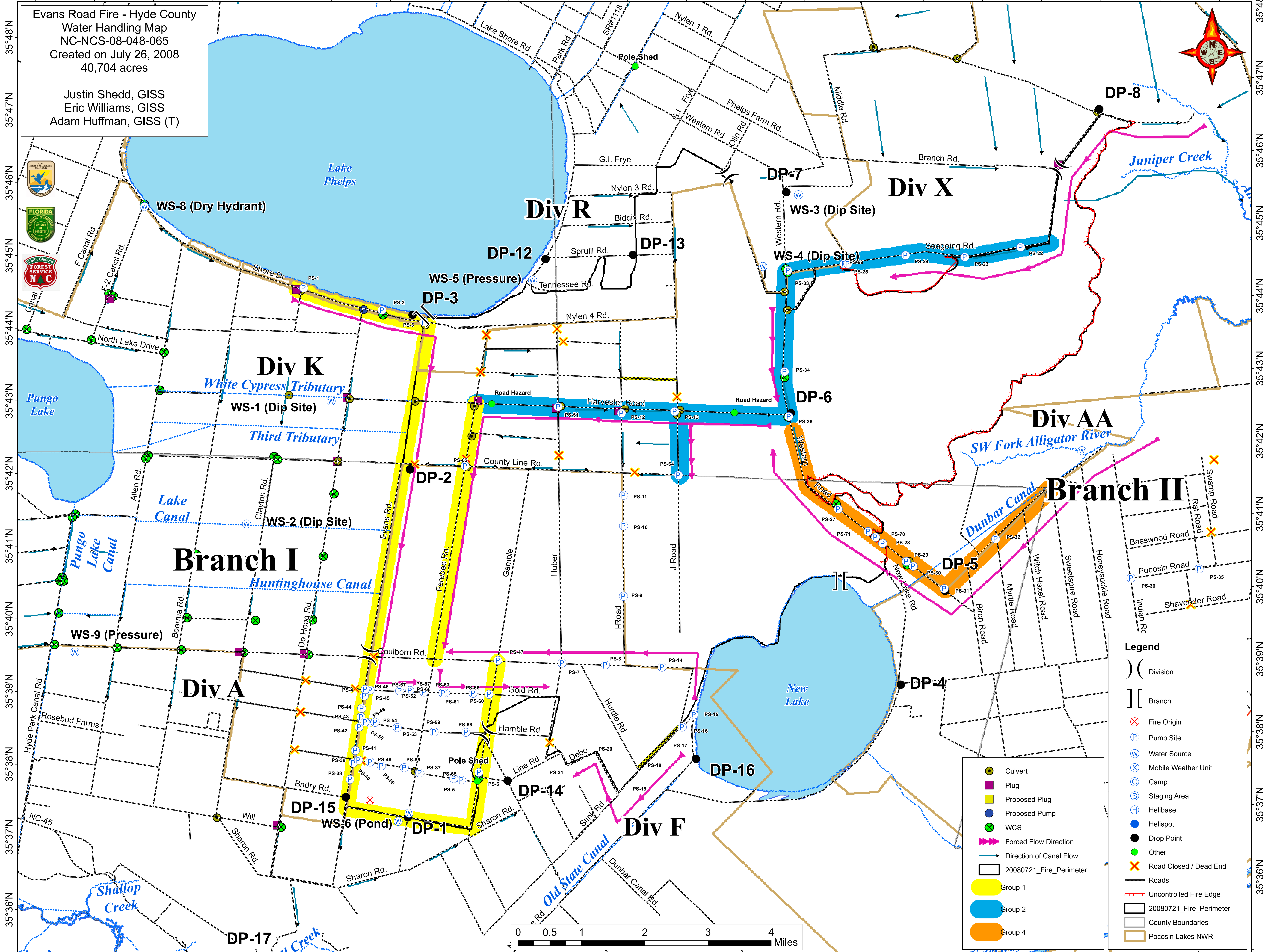
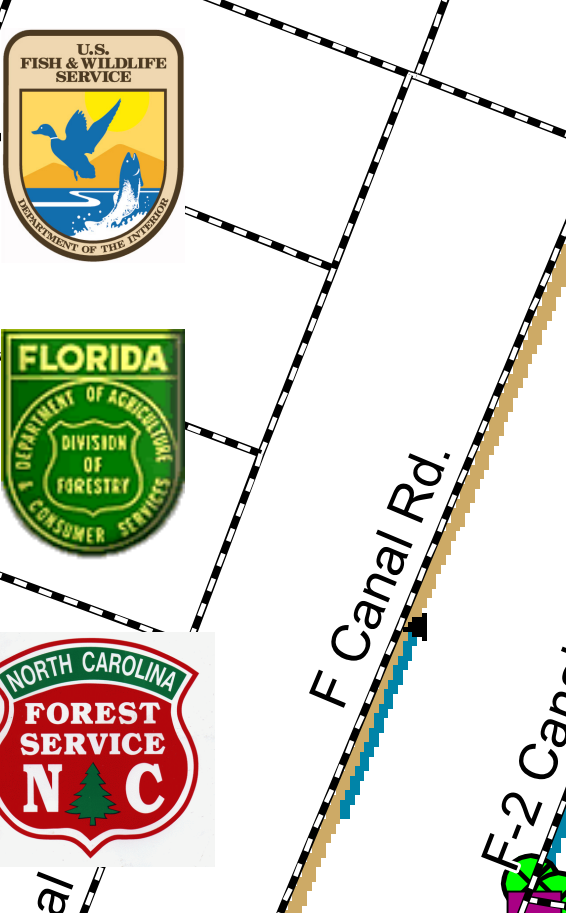


76°33'W 76°32'W 76°31'W 76°30'W 76°29'W 76°28'W 76°27'W 76°26'W 76°25'W 76°24'W 76°23'W 76°22'W 76°21'W 76°20'W 76°19'W 76°18'W 76°17'W 76°16'W 76°15'W 76°14'W 76°13'W



Evans Road Fire - Hyde County
Water Handling Map
NC-NCS-08-048-065
Created on July 26, 2008
40,704 acres

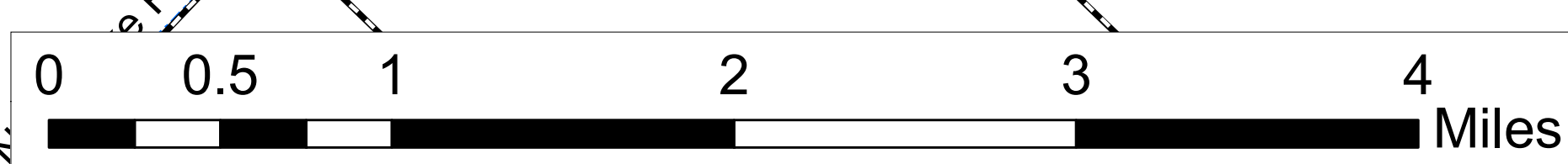
Justin Shedd, GISS
Eric Williams, GISS
Adam Huffman, GISS (T)



Legend

()	Division
[]	Branch
⊗	Fire Origin
P	Pump Site
W	Water Source
X	Mobile Weather Unit
C	Camp
S	Staging Area
H	Helibase
●	Helispot
●	Drop Point
●	Other
X	Road Closed / Dead End
---	Roads
---	Uncontrolled Fire Edge
---	20080721_Fire_Perimeter
---	County Boundaries
---	Pocosin Lakes NWR

●	Culvert
■	Plug
■	Proposed Plug
●	Proposed Pump
●	WCS
→	Forced Flow Direction
→	Direction of Canal Flow
---	20080721_Fire_Perimeter
■	Group 1
■	Group 2
■	Group 4



76°33'W 76°32'W 76°31'W 76°30'W 76°29'W 76°28'W 76°27'W 76°26'W 76°25'W 76°24'W 76°23'W 76°22'W 76°21'W 76°20'W 76°19'W 76°18'W 76°17'W 76°16'W 76°15'W 76°14'W 76°13'W